

CORNER RECORD

Document Number

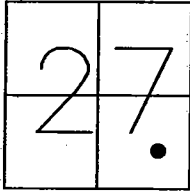
C.R. 10-66City of LATHROP

County of

SAN JOAQUIN

, California

Brief Legal Description

A PORTION OF THE SOUTH 1/2 OF SECTION 27, T.1S., R.6E., M.D.B.&M.

T1S, R6E

Government Corner ☐ Control ☐
Meander ☐ Property ☐
Rancho ☐ Other ☒
Date of Survey 8-27-2010

COORDINATES (Optional)

N. _____
E. _____
Zone _____ NAD27 ☐ NAD83 ☐
NAD83 Epoch _____
Elev. _____
Vert. Datum: NGVD29 ☐ NAVD88 ☐
Meas. Units: Metric ☐ Imperial ☐

Corner - Left as found ☒ Found and tagged ☐ Established ☐ Reestablished ☐ Rebuilt ☐

Identification and type of corner found: Evidence used to identify or procedure used to establish or reestablished the corner:
FOUND 2 1/2" BRASS DISK STAMPED "LS 7079" IN MONUMENT WELL AT THE INTERSECTION OF HARLAN ROAD AND "O" STREET IN THE SOUTH 1/2 OF SECTION 27, T.1S., R.6E., M.D.B.&M. [CALLED 3/4" IRON PIPE ON BOOK 40 OF MAPS AND PLATS, AT PAGE 43, SAN JOAQUIN COUNTY RECORDS].
MONUMENT IDENTIFIED AS BEING IN AREA OF RE-CONSTRUCTION. SET HORIZONTAL TIES AS SHOWN ON PAGE 2.

A description of the physical condition of the monument as found and as set or reset: _____
FOUND BRASS DISK STAMPED "LS 7079" IN MONUMENT WELL. (SEE PAGE 2)

This Corner Record was prepared by me or under my direction in conformance with the Land Surveyors' Act on OCTOBER 6, 2010.

Signed [Signature] L.S. 6953



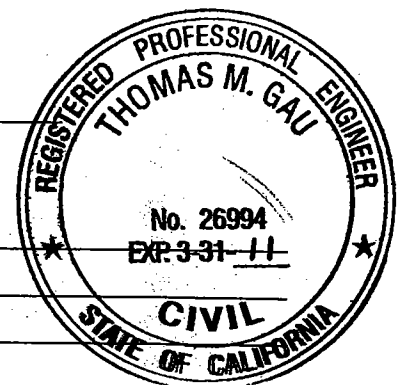
COUNTY SURVEYOR'S STATEMENT

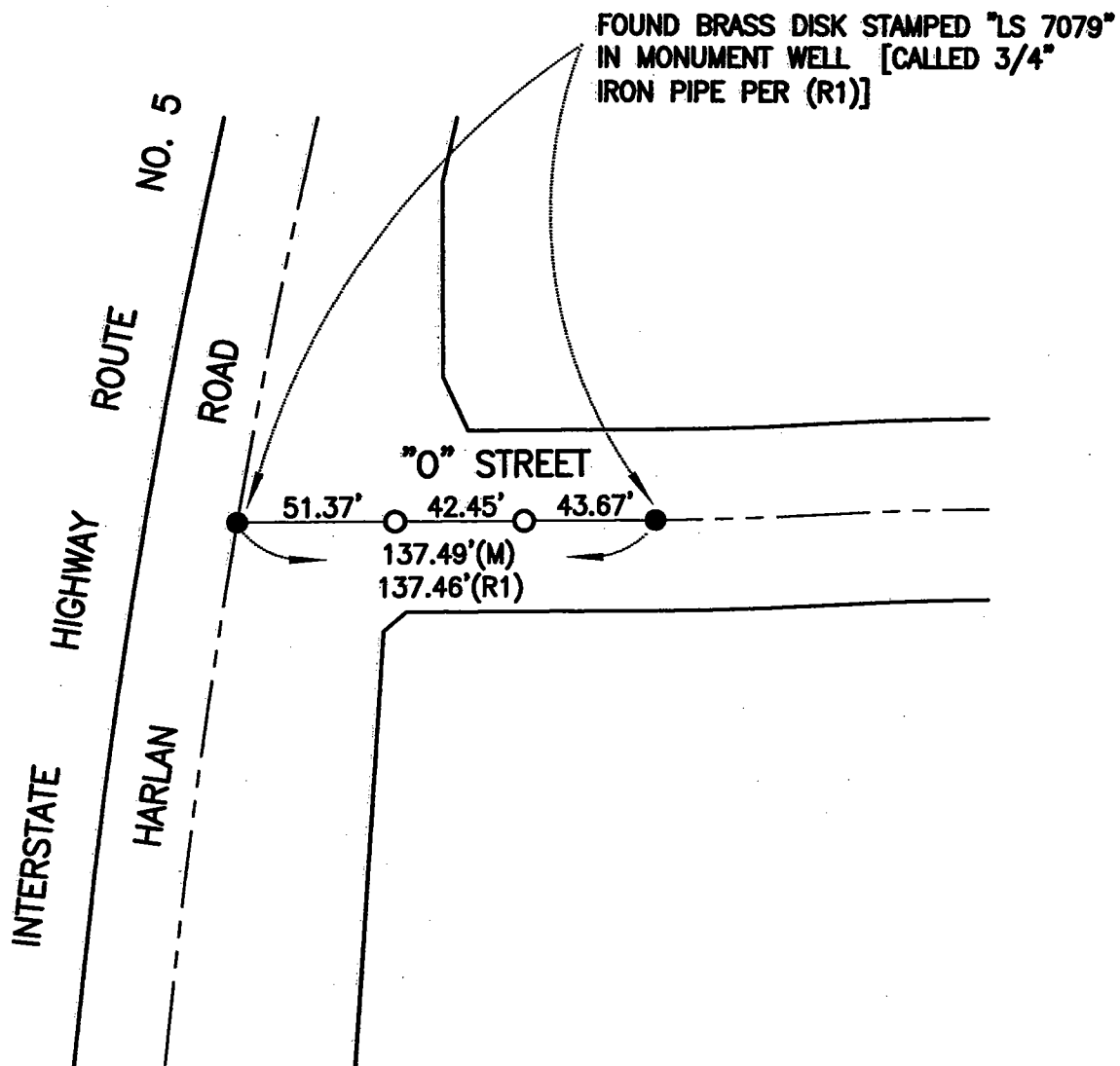
This Corner Record was received OCTOBER 8, 2010 and examined and filed OCTOBER 19, 2010.

Signed [Signature] P.L.S. or R.C.E. No. 23341

RR Title COUNTY SURVEYOR

County Surveyors Comment _____





LEGEND:

- SET NAIL AND TAG "LS 6953"
- FOUND MONUMENT AS NOTED
- S.J.C.R. DENOTES SAN JOAQUIN COUNTY RECORDS
- M.&P. DENOTES MAPS AND PLATS, BOOK-PAGE, S.J.C.R.
- (M) MEASURED DISTANCE. ALL DISTANCES ARE MEASURED
UNLESS NOTED OTHERWISE.

REFERENCES:

(R1) M.&P. 40-43, S.J.C.R.



NOT TO SCALE