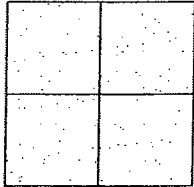


CORNER RECORD

Document Number CR-10-63
City of _____ County of San Joaquin, California

Brief Legal Description CORRAL HOLLOW ROAD 660' SOUTH OF LAMMERS ROAD

(WITHIN RANCHO EL PESCADERO)



CORNER TYPE

Government Corner ☐ Control ☐
Meander ☐ Property ☐
Rancho ☐ Other ☒

Date of Survey September 13, 2010

COORDINATES (Optional)

N. _____
E. _____
Zone _____ NAD27 ☐ NAD83 ☐
NAD83 Epoch _____
Elev. _____
Vert. Datum: NGVD29 ☐ NAVD88 ☐
Meas. Units: Metric ☐ Imperial ☒

Corner - Left as found ☐ Found and tagged ☐ Established ☐ Reestablished ☒ Rebuilt ☐

Identification and type of corner found: Evidence used to identify or procedure used to establish or reestablish the corner:
INTERSECTION POINT WAS REESTABLISHED BASED ON TIES FROM CR 09-31, SAN JOAQUIN COUNTY SURVEYOR'S RECORDS.

A description of the physical condition of the monument as found and as set or reset: _____
SEE SKETCH ON BACKSIDE.

SURVEYOR'S STATEMENT

This Corner Record was prepared by me or under my direction in conformance with the Land Surveyors' Act on September 29, 2010.

Signed Kevin L. Jorgensen P.L.S. Number 8470

COUNTY SURVEYOR'S STATEMENT

This Corner Record was received SEPTEMBER 30, 2010 and examined and filed OCTOBER 7, 2010.

Signed Thomas M. Gau R.C.E. No. 23341

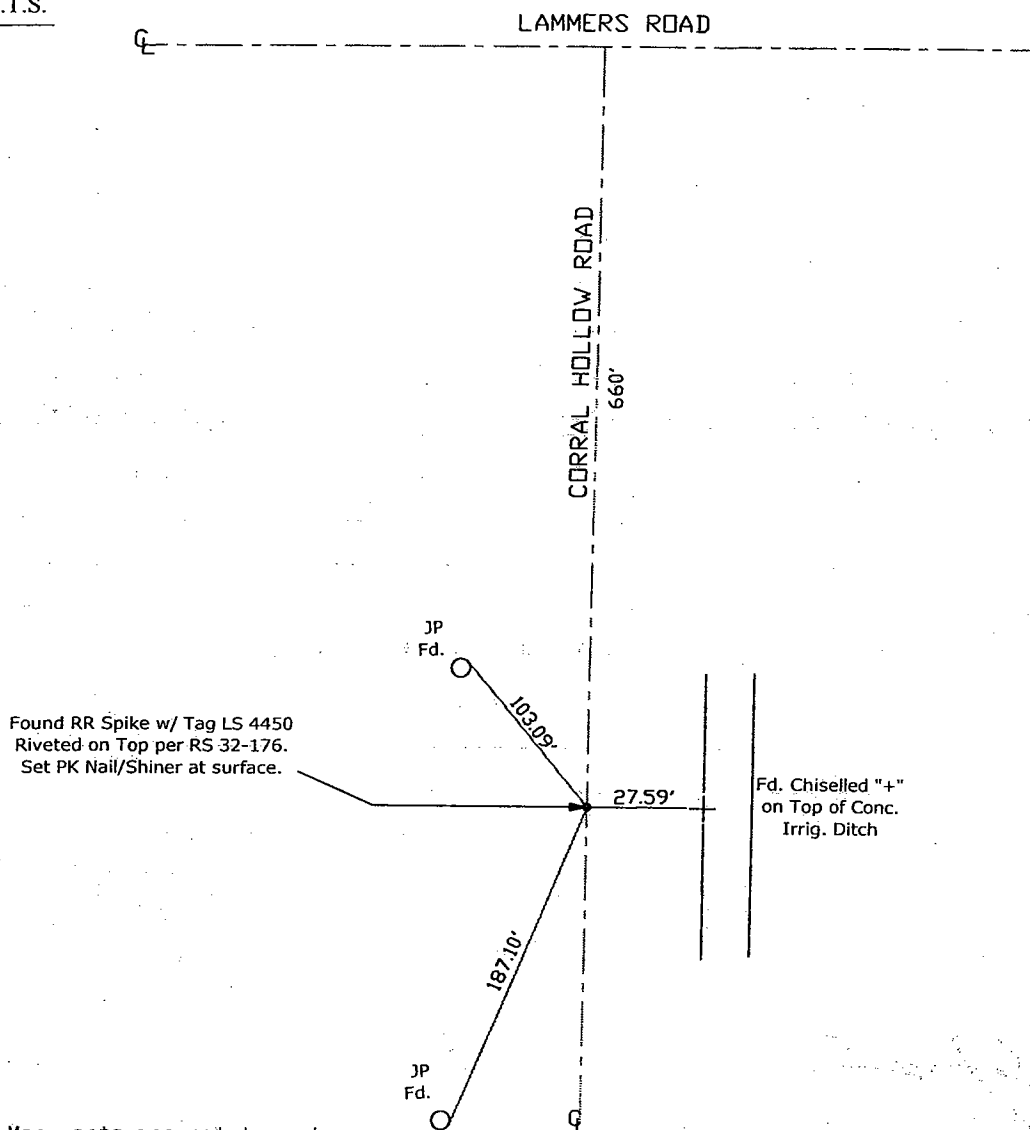
PTL Title County Surveyor

County Surveyor's Comment _____





N.T.S.



Note: Found Monuments are not tagged unless otherwise noted.

"No Attempt Was Made to Verify the Monument(s)"

Set=Conc. Nail with Brass Washer Stamped

"S.J. Co.", unless otherwise noted

Fd.=Found Conc. Nail with Brass Washer Stamped

"S.J. Co.", unless otherwise noted

FP=Fence Post

JP=Joint Pole

LP=Light Pole

PP=Power Pole

SP=Service Pole

TP=Telephone Pole

S.F.N.=Searched Found Nothing

N.T.S.=Not To Scale

M&P=Maps & Plots

PM=Parcel Map

RS=Record of Survey

FB=Field Book

102555250
M. W. Brown

1025