

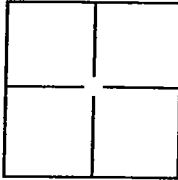
# CORNER RECORD

City of Stockton

Document Number CR-10-60

County of San Joaquin, California

Brief Legal Description Spyglass Drive in Section 36 T 2. N. R. 5 E., and Section 31 T. 2 N. R. 6 E.



## CORNER TYPE

Government Corner ☐ Control ☐  
Meander ☐ Property ☒  
Rancho ☐ Other ☐

Date of Survey July 30, 2010

## COORDINATES(Optional)

N. \_\_\_\_\_  
E. \_\_\_\_\_  
Zone \_\_\_\_\_ NAD27 ☐ NAD83 ☐  
NAD83 Epoch \_\_\_\_\_  
Elev. \_\_\_\_\_  
Vert. Datum: NGVD29 ☐ NADV88 ☐  
Meas. Units: Metric ☐ Imperial ☐

Corner - Left as found ☒ Found and tagged ☐ Established ☐ Reestablished ☐ Rebuilt ☐

Identification and type of corner found: Evidence used to identify or procedure used to establish or reestablish the corner.

All monuments were located from the Final Map filed for record on 11/27/2000 in Book 35 of Maps and

Plats at Page 72. All monuments were measured using conventional and RTK GPS surveying methods. All distances are provided in United States Survey Feet.

A description of the physical condition of the monument as found and as set or reset: All centerline monuments found were 3/4 inch diameter rebars with caps stamped "LS 4334" . All centerline monuments were located in monument boxes and were in good condition.

## SURVEYOR'S STATEMENT

This Corner Record was prepared by me or under my direction in conformance with the Land Surveyor's Act on August 16th, 2010.

Signed Scott L. Blake P.L.S. or R.C.E. No.: 8489



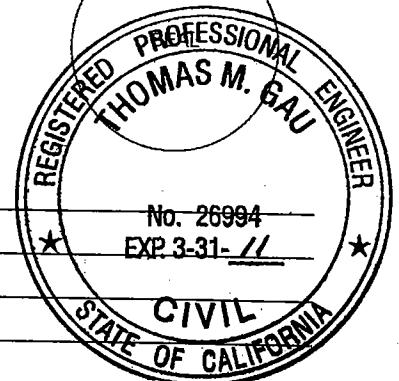
## COUNTY SURVEYOR'S STATEMENT

This Corner Record was received SEPTEMBER 14, 2010 and examined and filed OCTOBER 7, 2010.

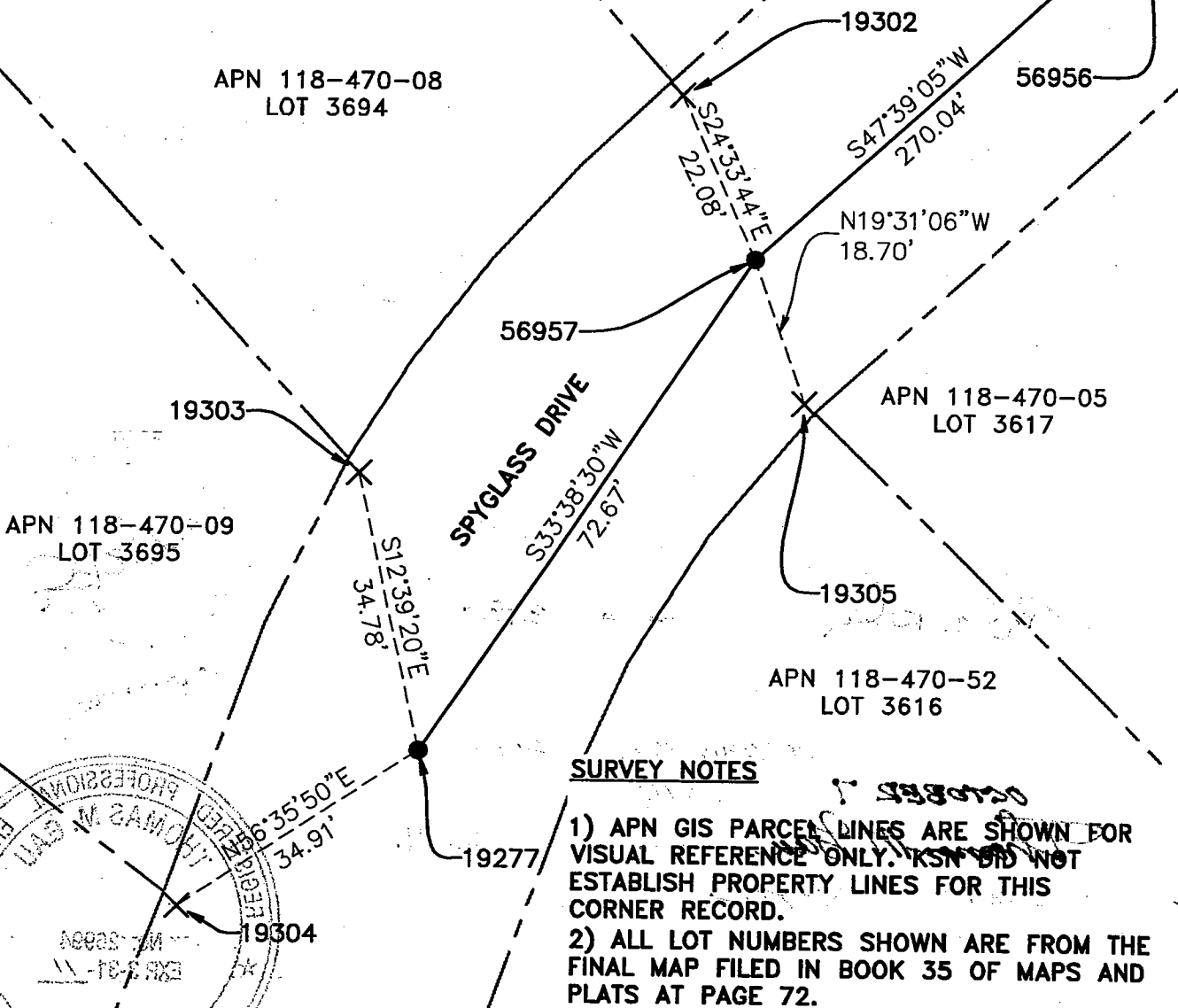
Signed Thomas M. Gau P.L.S. or R.C.E. No.: 23341

Title COUNTY SURVEYOR

County Surveyor's Comment \_\_\_\_\_



POINT ID	DESCRIPTION
19304	FOUND A CHISELED X IN SIDEWALK.
19277	FOUND A 3/4 INCH REBAR & CAP STAMPED "LS 4334"
19303	FOUND A CHISELED X IN SIDEWALK.
19302	FOUND A CHISELED X IN SIDEWALK.
19305	FOUND A CHISELED X IN GUTTER PAN
56956	FOUND A 3/4 INCH REBAR & CAP STAMPED "LS 4334"
56957	FOUND A 3/4 INCH REBAR & CAP STAMPED "LS 4334"



#### SURVEY NOTES

- 1) APN GIS PARCEL LINES ARE SHOWN FOR VISUAL REFERENCE ONLY. KSM DID NOT ESTABLISH PROPERTY LINES FOR THIS CORNER RECORD.
- 2) ALL LOT NUMBERS SHOWN ARE FROM THE FINAL MAP FILED IN BOOK 35 OF MAPS AND PLATS AT PAGE 72.

**KJELDSEN SINNOCK NEUDECK INC.**  
Civil Engineers and Land Surveyors  
Post Office Box 844  
711 N. Pershing Avenue  
Stockton, CA 95201-0844  
Office: (209) 946-0288  
Fax: (209) 946-0288  
E-mail: KSN@ksninc.com

**M & C COMMUNITIES  
SPYGLASS ROAD IMPROVEMENT  
BROOKSIDE ESTATES  
CORNER RECORD**

Design	Scale 1" = 20'	Date AUGUST 2010
Drawn CSM	Original Drawing Scale 0 1/4" 1/2"	Sheet Number 1 of 1
Check SLB		Project File No. 2138-0010