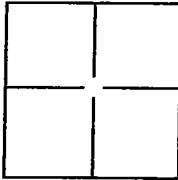


CORNER RECORD

Document Number CR-10-59
City of Stockton County of San Joaquin, California

Brief Legal Description Spyglass Drive in Section 36 T. 2. N. R. 5 E., and Section 31 T. 2 N. R. 6 E.



CORNER TYPE

Government Corner ☐ Control ☐
Meander ☐ Property ☒
Rancho ☐ Other ☐

Date of Survey July 30, 2010

COORDINATES(Optional)

N. _____
E. _____
Zone _____ NAD27 ☐ NAD83 ☐
NAD83 Epoch _____
Elev. _____
Vert. Datum: NGVD29 ☐ NADV88 ☐
Meas. Units: Metric ☐ Imperial ☐

Corner - Left as found ☒ Found and tagged ☐ Established ☐ Reestablished ☐ Rebuilt ☐

Identification and type of corner found: Evidence used to identify or procedure used to establish or reestablish the corner:

All monuments were located from the Final Map filed for record on 11/27/2000 in Book 35 of Maps and

Plats at Page 72. All monuments were measured using conventional and RTK GPS surveying methods. All distances are provided in United States Survey Feet.

A description of the physical condition of the monument as found and as set or reset: All centerline monuments found were 3/4 inch diameter rebars with caps stamped "LS 4334" . All centerline monuments were located in monument boxes and were in good condition.

SURVEYOR'S STATEMENT

This Corner Record was prepared by me or under my direction in conformance with

the Land Surveyor's Act on August 16th, 2010

Signed [Signature] P.L.S. or R.C.E. No.: 8489

COUNTY SURVEYOR'S STATEMENT

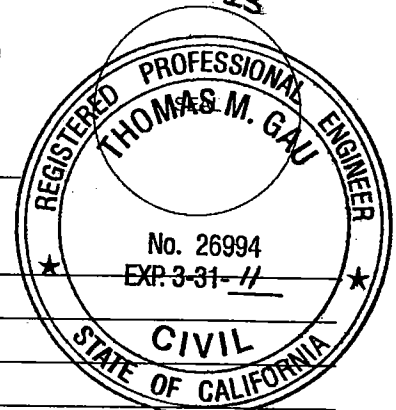
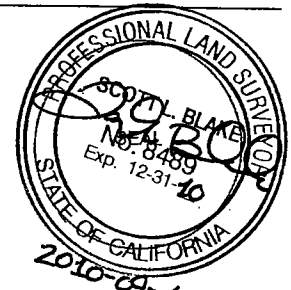
This Corner Record was received SEPTEMBER 14, 2010 and examined

and filed OCTOBER 7, 2010

Signed Thomas M. Gau P.L.S. or R.C.E. No.: 23341

FR Title COUNTY SURVEYOR

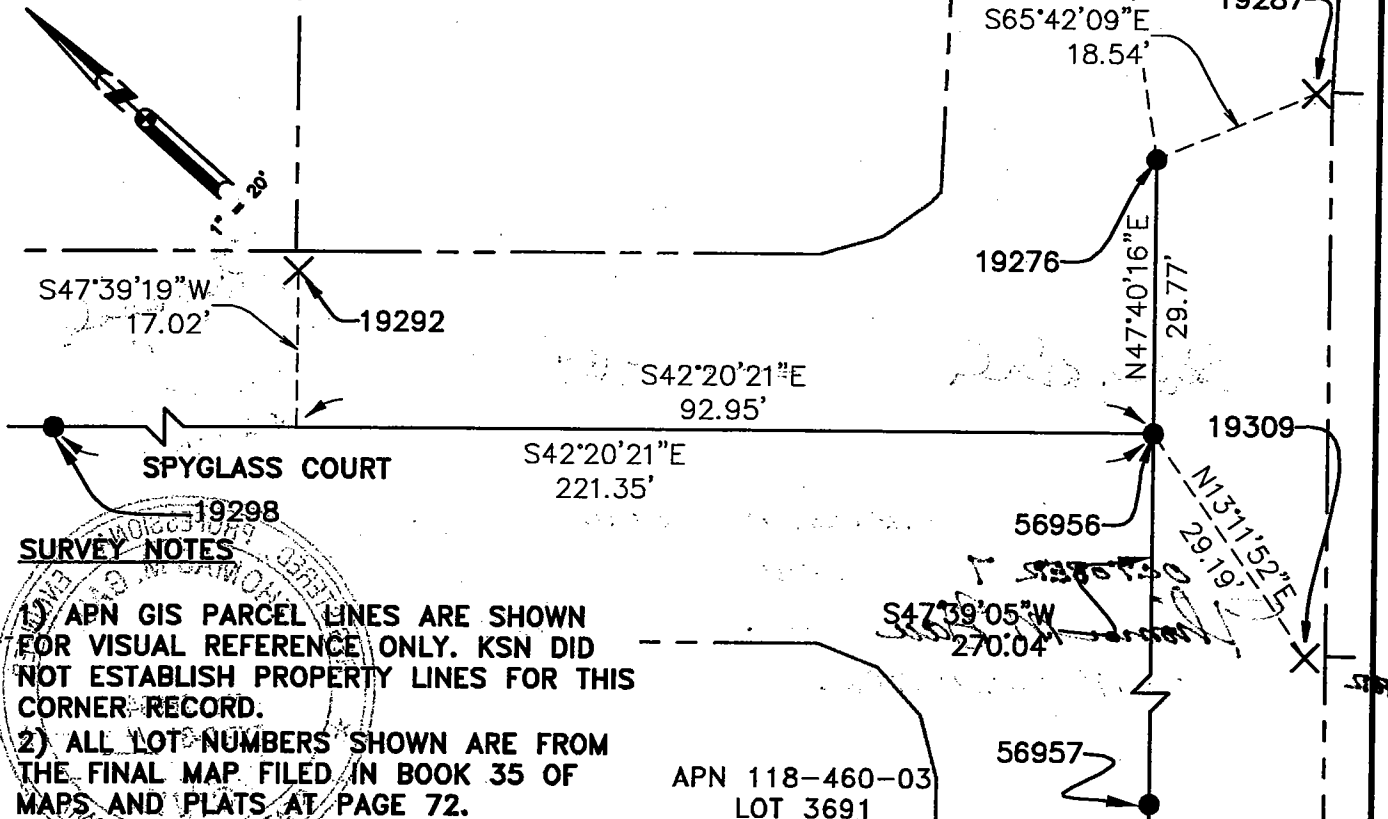
County Surveyor's Comment _____



POINT ID	DESCRIPTION
19276	FOUND A 3/4 INCH REBAR & CAP STAMPED "LS 4334"
19287	FOUND A CHISELED X IN THE GUTTER PAN
19291	FOUND A CHISELED X IN SIDEWALK.
19292	FOUND A CHISELED X IN THE GUTTER PAN
19298	FOUND A 3/4 INCH REBAR & CAP STAMPED "LS 4334"
19309	FOUND A CHISELED X IN THE GUTTER PAN
56956	FOUND A 3/4 INCH REBAR & CAP STAMPED "LS 4334"
56957	FOUND A 3/4 INCH REBAR & CAP STAMPED "LS 4334"

APN 118-460-11
LOT 3683

APN 118-460-12
LOT 3682



SURVEY NOTES

- 1) APN GIS PARCEL LINES ARE SHOWN FOR VISUAL REFERENCE ONLY. KSN DID NOT ESTABLISH PROPERTY LINES FOR THIS CORNER RECORD.
- 2) ALL LOT NUMBERS SHOWN ARE FROM THE FINAL MAP FILED IN BOOK 35 OF MAPS AND PLATS AT PAGE 72.

KJELDSSEN SINNOCK NEUDECK INC.
Civil Engineers and Land Surveyors
Post Office Box 844
711 N. Pershing Avenue
Stockton, CA 95201-0844
Office: (209) 946-0288
Fax: (209) 946-0298
E-mail: KSN@kaninc.com

**M & C COMMUNITIES
SPYGLASS ROAD IMPROVEMENTS
BROOKSIDE ESTATES
CORNER RECORD**

Design
Drawn CSM
Check SLB
Scale 1" = 20'
Original Drawing Scale 0 1/4" 1/2"

Date AUGUST 2010
Sheet Number 1 of 1
Project File No. 2138-0010