

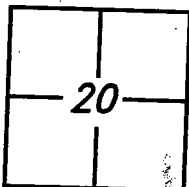
# CORNER RECORD

City of RIPON

Document Number CR-10-54

County of SAN JOAQUIN, California

Brief Legal Description CENTERLINE MONUMENT AT INTERSECTION OF BOGARIN LANE WITH MANLEY ROAD.  
IN THE SOUTHEAST QUARTER OF SECTION 20, T.2S., R.8E., M.D.B.&M.



## CORNER TYPE

Government Corner ☐ Control ☐  
Meander ☐ Property ☐  
Rancho ☐ Other ☒

## COORDINATES (Optional)

N \_\_\_\_\_  
E \_\_\_\_\_  
Zone \_\_\_\_\_ NAD27 ☐ NAD83 ☐  
NAD83 Epoch \_\_\_\_\_  
Elev. \_\_\_\_\_  
Vert. Datum: NVGD29 ☐ NVGD88 ☐  
Meas. Units: Metric ☐ Imperial ☐

Date of Survey JULY 15, 2010

Corner— Left as found ☒ Found and tagged ☐ Established ☐ Reestablished ☐ Rebuilt ☐

Identification and type of corner found: Evidence used to identify or procedure used to establish or reestablish the corner:  
CENTERLINE MONUMENT AT INTERSECTION OF BOGARIN LANE WITH MANLEY ROAD AS SET ON MAP FILED IN BOOK 28 OF  
MAPS AND PLATS, AT PAGE 20, SAN JOAQUIN COUNTY RECORDS. IDENTIFIED BY VERIFYING DISTANCE BETWEEN MONUMENT  
AT COUNTRY CLUB CIRCLE AS SHOWN ON PAGE 2.

A description of the physical condition of the monument as found and as set or reset:  
MONUMENT IDENTIFIED AS BEING IN AREA OF RECONSTRUCTION. SET TIES AS SHOWN ON PAGE 2.

## SURVEYOR'S STATEMENT

This Corner Record was prepared by me or under my direction in conformance with  
the Land Surveyors' Act on AUGUST 5, 2010.

Signed [Signature] P.L.S. or R.C.E. Number 6406



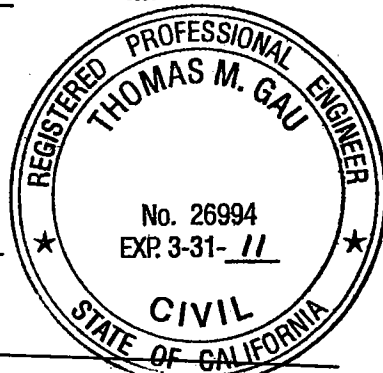
## COUNTY SURVEYOR'S STATEMENT

This Corner Record was received AUGUST 12, 2010 and examined  
and filed SEPTEMBER 16, 2010

Signed Thomas M. Gau P.L.S. or R.C.E. No: 23341

FOR Title COUNTY SURVEYOR

County Surveyor's Comment \_\_\_\_\_

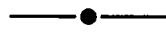




SCALE: 1" = 20'



**LEGEND:**



FOUND MONUMENT AS NOTED.



SET NAIL AND TAG L.S.6406 IN PAVEMENT

P.M.

PARCEL MAPS, BOOK-PAGE, S.J.C.R.

M.&P.

MAPS AND PLATS, BOOK-PAGE, S.J.C.R.

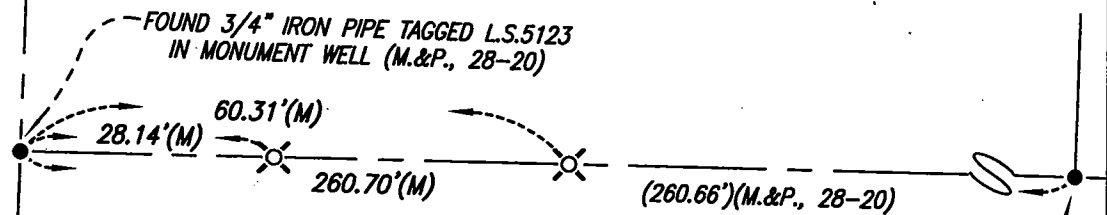
S.J.C.R.

SAN JOAQUIN COUNTY RECORDS

MANLEY ROAD

COUNTRY CLUB CIRCLE

M.&P., 28-20



**BOGARIN LANE**

FOUND 3/4" IRON PIPE, NO TAG, IN MONUMENT WELL -  
(3/4" IRON PIPE, TAGGED L.S.5123, IN MONUMENT WELL)(M.&P., 28-20)

M.&P., 28-20