

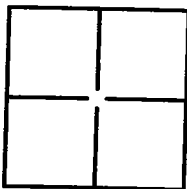
CORNER RECORD

City of STOCKTON

Document Number 10-45

Brief Legal Description IN SECTION 49, C.M. WEBER GRANT

County of SAN JOAQUIN, California



CORNER TYPE

Government Corner ☐ Control ☐
Meander ☐ Property ☐
Rancho ☐ Other ☒

Date of Survey JUNE 7, 2010

COORDINATES (Optional)

N _____
E _____
Zone _____ NAD27 ☐ NAD83 ☐
NAD83 Epoch _____
Elev. _____
Vert. Datum: NVGD29 ☐ NVGD88 ☐
Meas. Units: Metric ☐ Imperial ☐

Corner— Left as found ☒ Found and tagged ☐ Established ☐ Reestablished ☐ Rebuilt ☐

Identification and type of corner found: Evidence used to identify or procedure used to establish or reestablish the corner:
CENTERLINE MONUMENTS ARCH-AIRPORT ROAD 275± NORTHWEST OF QANTAS LANE.
MONUMENT IDENTIFIED AS BEING IN AREA OF RE-CONSTRUCTION.
SET TIES AS SHOWN ON PAGE 2.

A description of the physical condition of the monument as found and as set or reset:
SEE PAGE 2

SURVEYOR'S STATEMENT

This Corner Record was prepared by me or under my direction in conformance with
the Land Surveyors' Act on JUNE 25, 2010,

Signed [Signature] P.L.S. or R.C.E. Number 6406



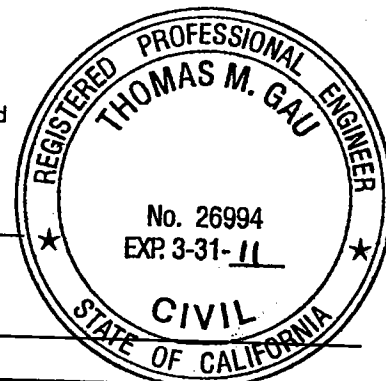
COUNTY SURVEYOR'S STATEMENT

This Corner Record was received AUGUST 9, 2010 and examined
and filed August 10, 2010

Signed Thomas M. Gau P.L.S. or R.C.E. No: 23341

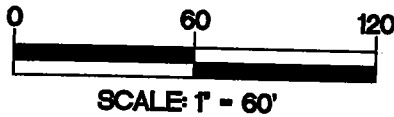
~~for~~ Title COUNTY SURVEYOR

County Surveyor's Comment _____



LEGEND:

- FOUND MONUMENT AS NOTED.
- SET 1/2" IRON PIPE WITH CAP L.S. 6406
- X— SET PK NAIL AS NOTED.
- R.S. RECORD OF SURVEY, BOOK-PAGE, S.J.C.R.
- P.M. PARCEL MAPS, BOOK-PAGE, S.J.C.R.
- M.&P. MAPS AND PLATS, BOOK-PAGE, S.J.C.R.
- S.J.C.R. SAN JOAQUIN COUNTY RECORDS



R.S., 35-172

ARCH - AIRPORT ROAD

317.68'
316.26'

FOUND BOLT & WASHER
(R.S., 35-172)(R.S., 28-87)

59.26'
56.64'
45.49'
48.07'

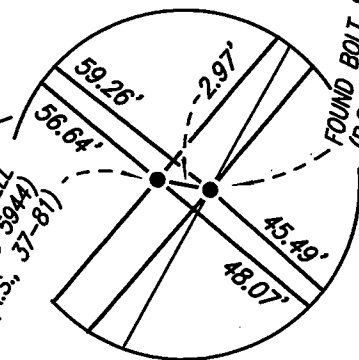
FOUND 2-1/2" BRASS CAP WITH PUNCH MARK
IN MONUMENT WELL
(3" BRASS DISK IN MON. WELL, STAMPED LS 5944)
(R.S., 37-81)

332.21'
333.65'

SET PK NAIL IN TRAFFIC SIGNAL ISLAND

SEE DETAIL

FOUND 2-1/2" BRASS CAP WITH PUNCH MARK
IN MONUMENT WELL
(3" BRASS DISK IN MON. WELL, STAMPED LS 5944)
(R.S., 37-81)



FOUND BOLT & WASHER
(R.S., 35-172)(R.S., 28-87)

M.&P., 26-122

QANTAS LANE