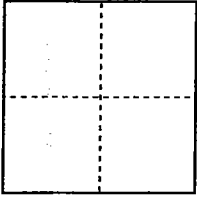


CORNER RECORD

City of Stockton

Document Number 10-29
County of San Joaquin, California

Brief Legal Description 20' WEST OF THE NORTHEAST CORNER OF LOT 9 OF "STEPHENS TRACT"
IN SECTION H OF THE C.M. WEBER GRANT



CORNER TYPE

Government Corner ☐ Control ☐
Meander ☐ Property ☒
Rancho ☐ Other ☐

Date of Survey March 28, 2010

COORDINATES (Optional)

N. _____
E. _____
Zone NAD27 ☐ NAD83 ☐
NAD83 Epoch _____
Elev. _____
Vert. Datum: NGVD29 ☐ NAVD88 ☐
Meas. Units: Metric ☐ Imperial ☐

Corner - Left as found ☐ Found and tagged ☐ Established ☐ Reestablished ☒ Rebuilt ☐

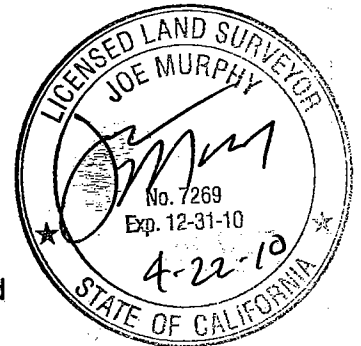
Identification and type of corner found: Evidence used to identify or procedure used to establish or reestablish the corner:
I found two monuments of record on the northerly line of said Lot 9. I reset a monument on the westerly
right-of-way of Stephens Road as shown.

A description of the physical condition of the monument as found and as set or reset: The found monuments were
in satisfactory condition and the distance measured between them was reasonable. I set a 3/4" x 30" iron rod
capped with "LS7269."

SURVEYOR'S STATEMENT

This Corner Record was prepared by me or under my direction in conformance with
the Land Surveyors' Act on April 22, 2010.

Signed [Signature] L.S. or R.C.E. Number 7269



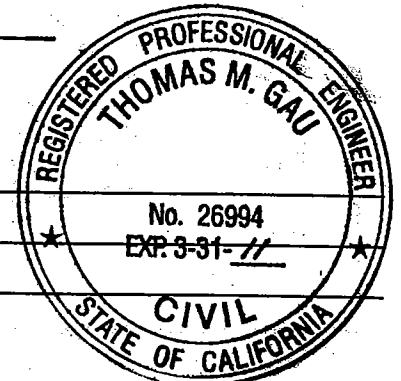
COUNTY SURVEYOR'S STATEMENT

This Corner Record was received APRIL 22, 2010 and examined
and filed April 27, 2010.

Signed [Signature] R.C.E. No. 23341

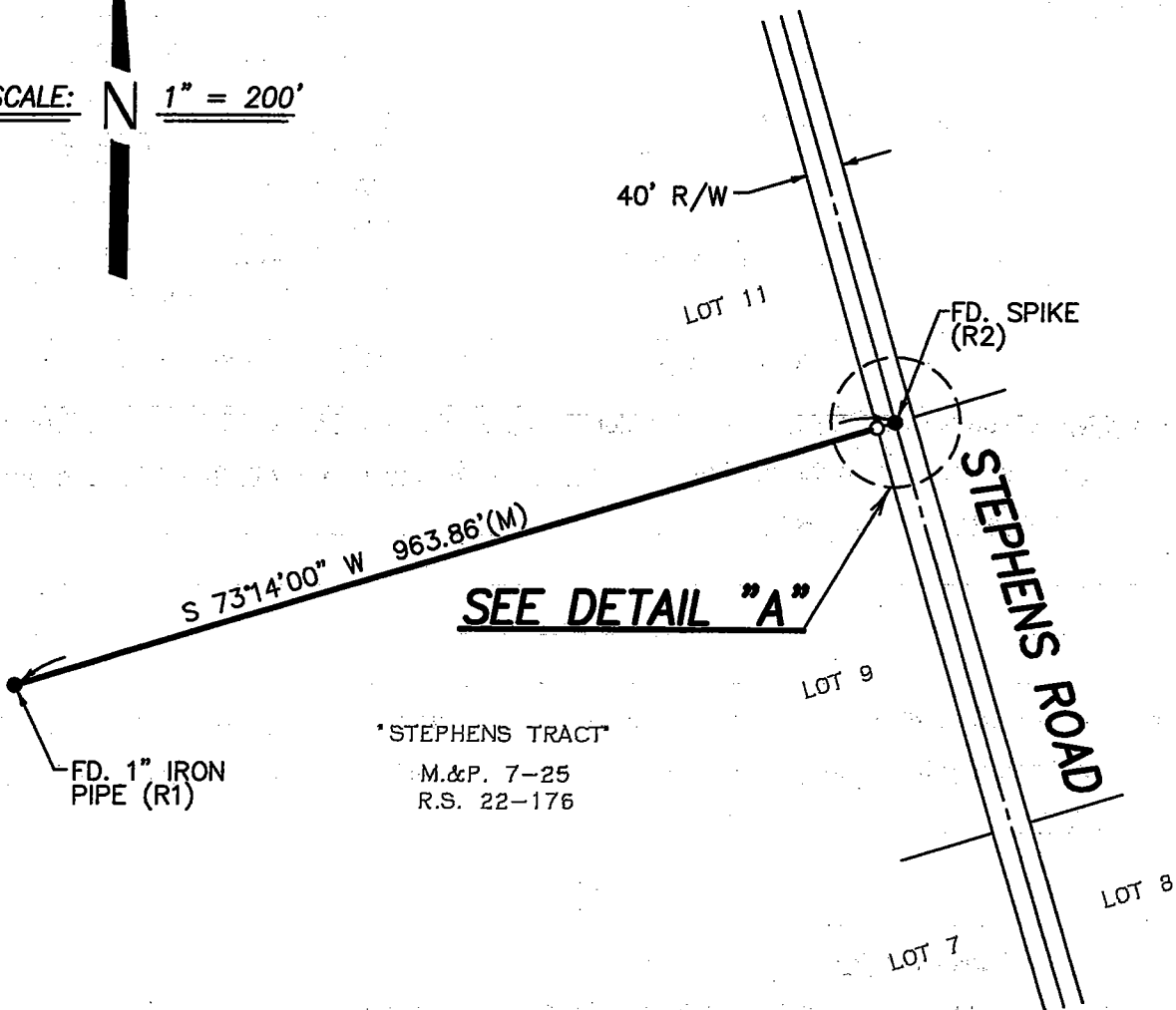
or Title County Surveyor

County Surveyor's Comment _____



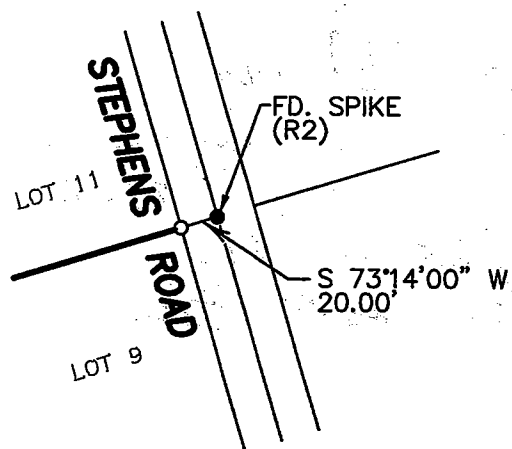
(D.D. Sheet No. 33)

SCALE: N 1" = 200'



LEGEND

- FOUND MONUMENT AS NOTED
- SET 3/4" IRON ROD CAPPED "L.S. 7269"
- (M) MEASURED
- FD. FOUND
- R/W RIGHT-OF-WAY
- M.&P. MAPS AND PLATS
- R.S. RECORD OF SURVEY
- P.M. PARCEL MAP
- (R1) R.S. 22-176
- (R2) P.M. 7-117



DETAIL "A"
NOT TO SCALE