

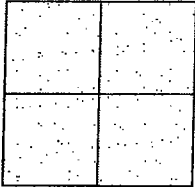
CORNER RECORD

City of _____

Document Number 10-21
County of San Joaquin, California

Brief Legal Description VON SOSTEN ROAD @ GRUNAUER ROAD

(WITHIN SECTIONS 14 & 23, TOWNSHIP 2 SOUTH, RANGE 4 EAST, MOUNT DIABLO BASE & MERIDIAN)



CORNER TYPE

Government Corner ☐ Control ☐
 Meander ☐ Property ☐
 Rancho ☐ Other ☒

Date of Survey March 17, 2010

COORDINATES (Optional)

N. _____
E. _____
Zone _____ NAD27 ☐ NAD83 ☐
NAD83 Epoch _____
Elev. _____
Vert. Datum: NGVD29 ☐ NAVD88 ☐
Meas. Units: Metric ☐ Imperial ☒

Corner - Left as found ☒ Found and tagged ☐ Established ☐ Reestablished ☐ Rebuilt ☐

Identification and type of corner found: Evidence used to identify or procedure used to establish or reestablish the corner:
SEE SKETCH ON BACKSIDE.

A description of the physical condition of the monument as found and as set or reset:
SEE SKETCH ON BACKSIDE.

SURVEYOR'S STATEMENT

This Corner Record was prepared by me or under my direction in conformance with the Land Surveyors' Act on April 7, 2010.

Signed [Signature] P.L.S. Number 8470

~~COUNTY SURVEYOR'S STATEMENT~~

This Corner Record was received APRIL 7, 2010 and examined and filed APRIL 8, 2010.

Signed Thomas M. Faur R.C.E. No. 23341

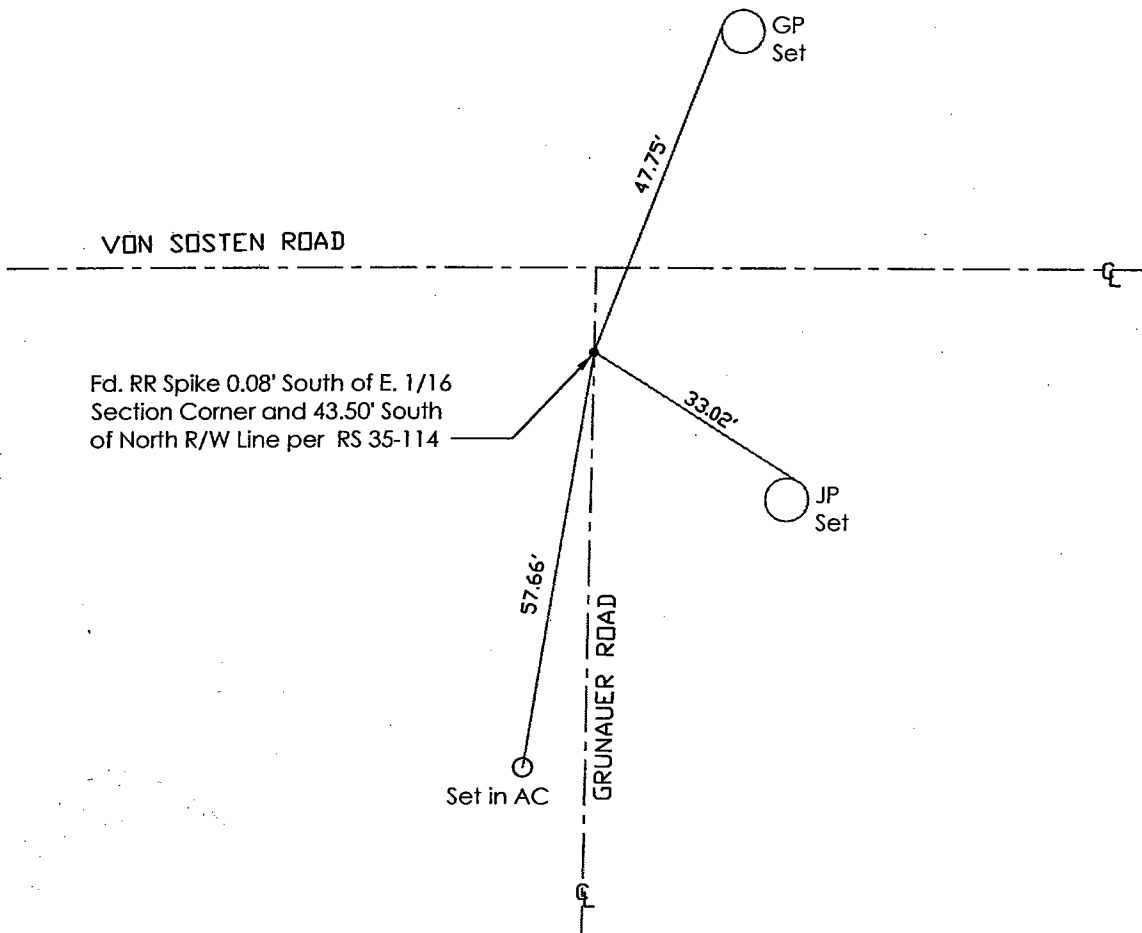
PR Title County Surveyor

County Surveyor's Comment





N.T.S.



Note: Found Monuments are not tagged
nor of Record, Unless otherwise noted.

"No Attempt Was Made to Verify the Monument(s)"

Fd.=Found
AC=Asphalt Concrete
GP=Guy Post
JP=Joint Pole
PP=Power Pole
SP=Service Pole
TP=Telephone Pole
S.F.N=Searched Found Nothing
N.T.S.=Not To Scale
Set=Conc. Nail with Brass Washer Stamped
"S.J. Co.", unless otherwise noted