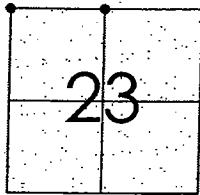


CORNER RECORD

City of _____ Document Number 10-20
County of San Joaquin, California

Brief Legal Description VON SOSTEN ROAD @ HANSEN ROAD & 2617.71' EAST OF HANSEN ROAD
NORTHWEST CORNER AND NORTH QUARTER CORNER OF SECTION 23



T2S R4E
M.D.B.&M.

CORNER TYPE
Government Corner ☒ Control ☐
Meander ☐ Property ☐
Rancho ☐ Other ☐
Date of Survey March 16, 2010

COORDINATES (Optional)
N. _____
E. _____
Zone _____ NAD27 ☐ NAD83 ☐
NAD83 Epoch _____
Elev. _____
Vert. Datum: NGVD29 ☐ NAVD88 ☐
Meas. Units: Metric ☐ Imperial ☒

Corner - Left as found ☒ Found and tagged ☐ Established ☐ Reestablished ☐ Rebuilt ☐

Identification and type of corner found: Evidence used to identify or procedure used to establish or reestablish the corner:
SEE SKETCH ON BACKSIDE.

A description of the physical condition of the monument as found and as set or reset:
SEE SKETCH ON BACKSIDE.

SURVEYOR'S STATEMENT

This Corner Record was prepared by me or under my direction in conformance with
the Land Surveyors' Act on April 7, 2010.

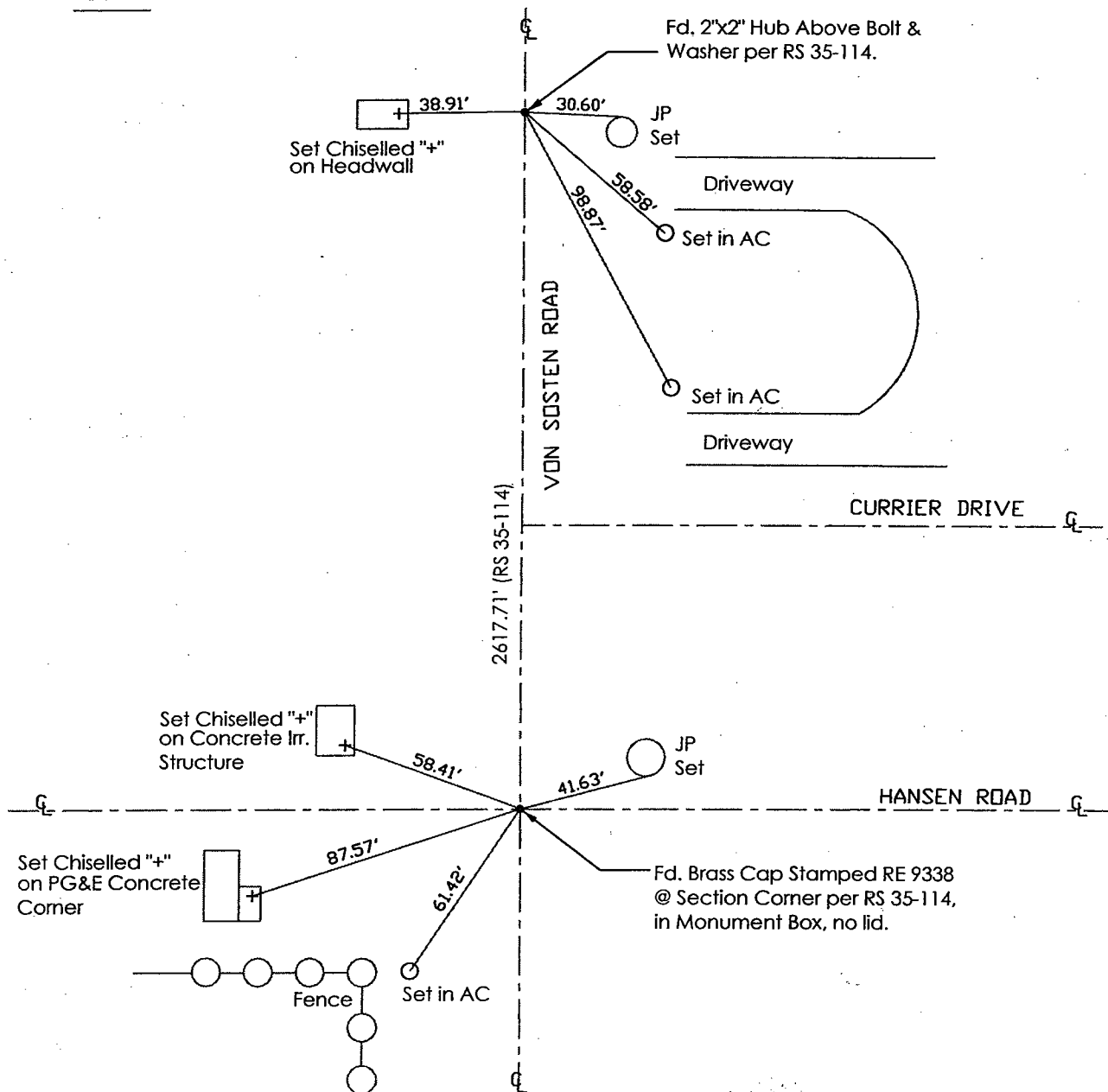
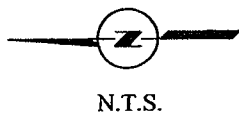
Signed [Signature] P.L.S. Number 8470
COUNTY SURVEYOR'S STATEMENT

This Corner Record was received APRIL 7, 2010 and examined
and filed APRIL 8, 2010.

Signed [Signature] R.C.E. No. 23341
Title County Surveyor

County Surveyor's Comment _____





Note: Found Monuments are not tagged nor of Record, Unless otherwise noted.

"No Attempt Was Made to Verify the Monument(s)"

Fd.=Found
 AC=Asphalt Concrete
 GP=Guy Post
 JP=Joint Pole
 PP=Power Pole
 SP=Service Pole
 TP=Telephone Pole
 S.F.N=Searched Found Nothing
 N.T.S.=Not To Scale
 Set=Conc. Nail with Brass Washer Stamped
 "S.J. Co.", unless otherwise noted