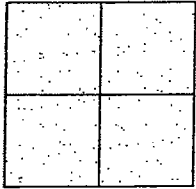


CORNER RECORD

Document Number CR-10-19
County of San Joaquin, California

Brief Legal Description OVERHISER ROAD 210' +/- SOUTHEAST OF TEIXEIRA DRIVE



CORNER TYPE

Government Corner ☐ Control ☐
Meander ☐ Property ☐
Rancho ☐ Other ☒

Date of Survey October 23, 2009

COORDINATES (Optional)

N. _____
E. _____
Zone _____ NAD27 ☐ NAD83 ☐
NAD83 Epoch _____
Elev. _____
Vert. Datum: NGVD29 ☐ NAVD88 ☐
Meas. Units: Metric ☐ Imperial ☒

Corner - Left as found ☐ Found and tagged ☐ Established ☐ Reestablished ☐ Rebuilt ☒

Identification and type of corner found: Evidence used to identify or procedure used to establish or reestablish the corner:
SEE SKETCH ON BACKSIDE.

A description of the physical condition of the monument as found and as set or reset:
SEE SKETCH ON BACKSIDE.

SURVEYOR'S STATEMENT

This Corner Record was prepared by me or under my direction in conformance with
the Land Surveyors' Act on 3/9/, 2010.

Signed [Signature] R.C.E. Number 8470

COUNTY SURVEYOR'S STATEMENT

This Corner Record was received MARCH 10, 2010 and examined
and filed MARCH 26, 2010.

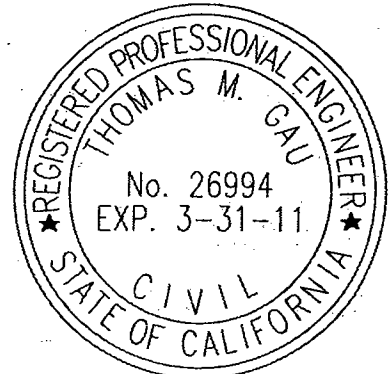
Signed [Signature] P.L.S. No. 23341

Title County Surveyor

County Surveyor's Comment _____

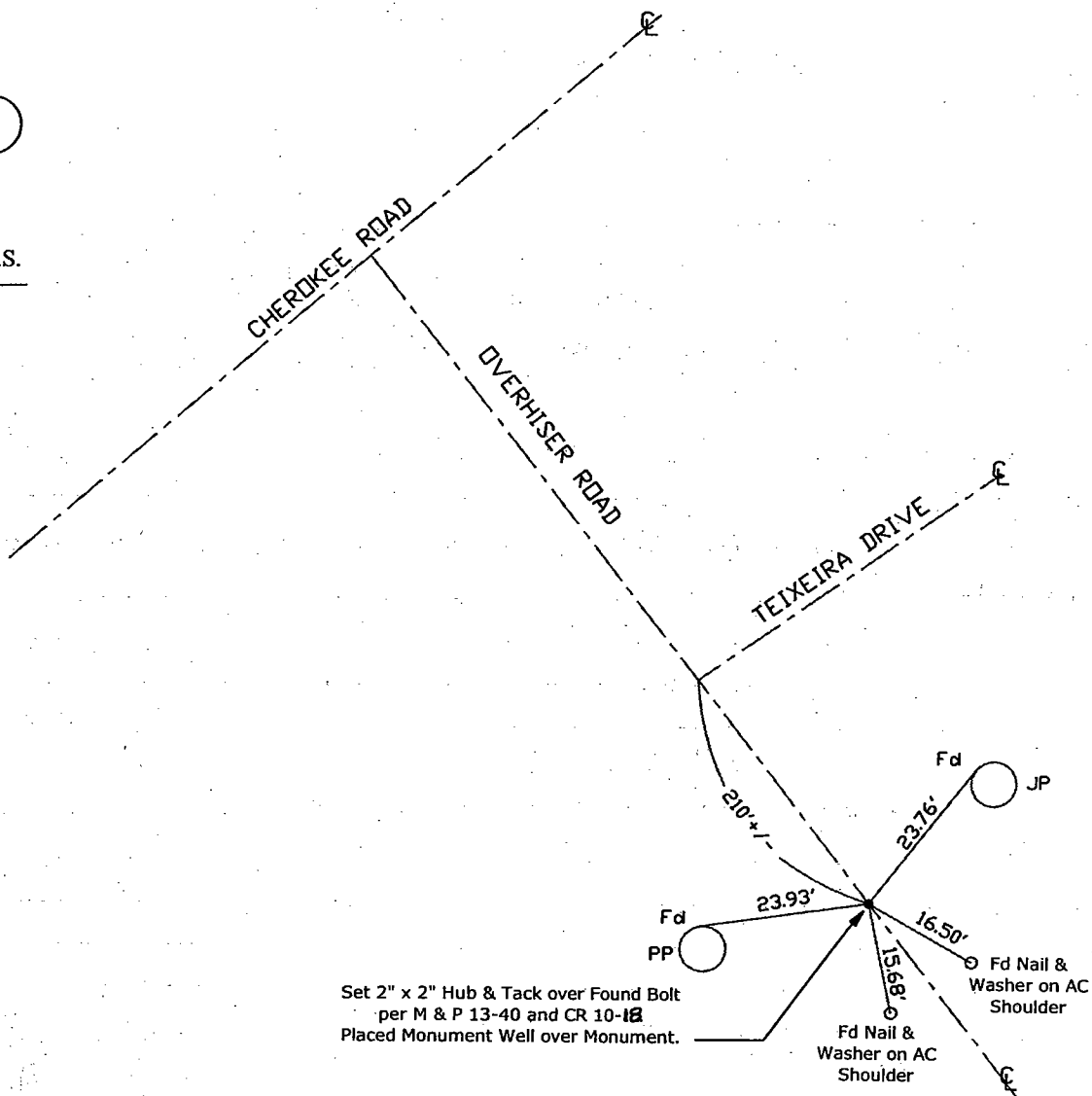
THIS CORNER RECORD IS NOT IN COMPLIANCE WITH BOARD RULE 464(c)

REGARDING SUBMITTAL WITHIN 90 DAYS FROM THE DATE OF SURVEY.





N.T.S.



Note: Found Monuments are not tagged
unless otherwise noted.

"No Attempt Was Made to Verify the Monument(s)"

FP=Fence Post
GP=Guy Post
JP=Joint Pole
PP=Power Pole
SP=Service Pole
TP=Telephone Pole
S.F.N=Searched Found Nothing
N.T.S.=Not To Scale
Fd=Conc. Nail with Brass Washer Stamped
"S.J. Co.", unless otherwise noted

01 HISSON

Handwritten signature and notes:
S.J. Co.
11-11-1968

102