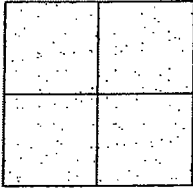


# CORNER RECORD

Document Number CR-10-17  
County of San Joaquin, California

City of \_\_\_\_\_

Brief Legal Description OVERHISER ROAD 1365'+/- NORTHWEST OF STATE HIGHWAY ROUTE 88



## CORNER TYPE

Government Corner ☐ Control ☐  
Meander ☐ Property ☐  
Rancho ☐ Other ☒

Date of Survey September 28, 2009

## COORDINATES (Optional)

N. \_\_\_\_\_  
E. \_\_\_\_\_  
Zone \_\_\_\_\_ NAD27 ☐ NAD83 ☐  
NAD83 Epoch \_\_\_\_\_  
Elev. \_\_\_\_\_  
Vert. Datum: NGVD29 ☐ NAVD88 ☐  
Meas. Units: Metric ☐ Imperial ☒

Corner - Left as found ☐ Found and tagged ☐ Established ☐ Reestablished ☒ Rebuilt ☐

Identification and type of corner found: Evidence used to identify or procedure used to establish or reestablish the corner:  
SEE SKETCH ON BACKSIDE.

A description of the physical condition of the monument as found and as set or reset:  
SEE SKETCH ON BACKSIDE.

## SURVEYOR'S STATEMENT

This Corner Record was prepared by me or under my direction in conformance with the Land Surveyors' Act on 3/9/, 2010.

Signed [Signature] R.C.E. Number 8470

## COUNTY SURVEYOR'S STATEMENT

This Corner Record was received MARCH 10, 2010 and examined and filed MARCH 26, 2010.

Signed [Signature] P.L.S. No. 23341

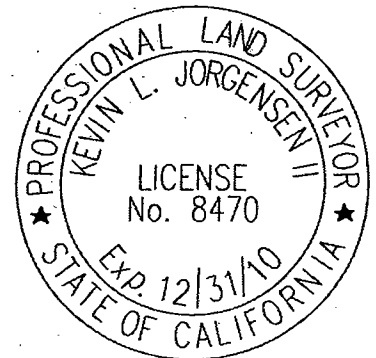
**for** Title County Surveyor

County Surveyor's Comment \_\_\_\_\_

THIS CORNER RECORD IS NOT IN COMPLIANCE WITH BOARD RULE 464(c)

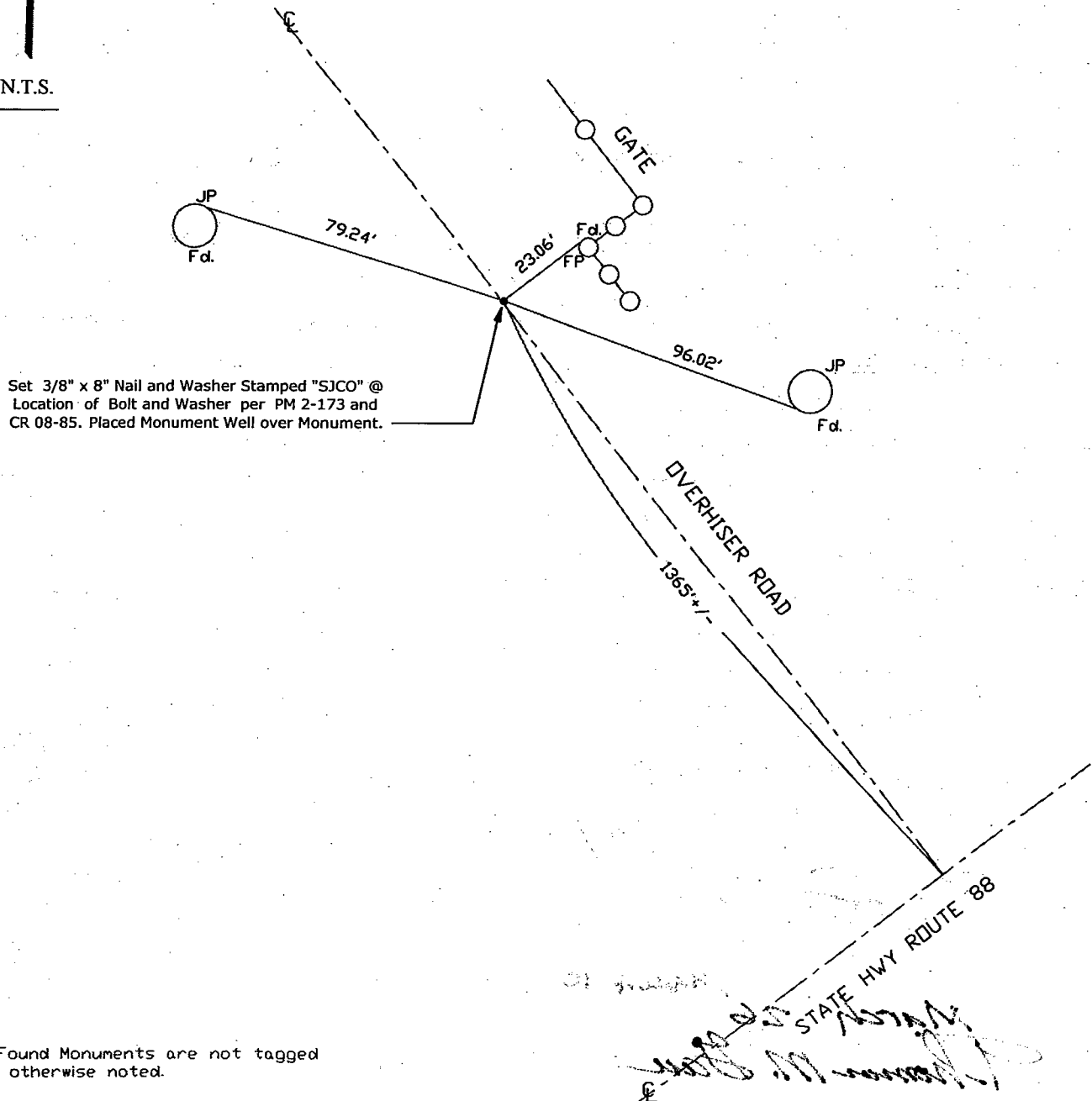
REGARDING SUBMITTAL WITHIN 90 DAYS FROM THE DATE OF SURVEY.

(D.D. Sheet No. 32 )  
Job No. 220749





N.T.S.



Set 3/8" x 8" Nail and Washer Stamped "SJCO" @  
Location of Bolt and Washer per PM 2-173 and  
CR 08-85. Placed Monument Well over Monument.

Note: Found Monuments are not tagged  
unless otherwise noted.

"No Attempt Was Made to Verify the Monument(s)"

FP=Fence Post  
GP=Guy Post  
JP=Joint Pole  
PP=Power Pole  
SP=Service Pole  
TP=Telephone Pole  
S.F.N=Searched Found Nothing  
N.T.S.=Not To Scale  
Fd.=Conc. Nail with Brass Washer Stamped  
"S.J. Co.", unless otherwise noted