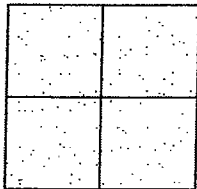


CORNER RECORD

Document Number CR-10-16
City of _____ County of San Joaquin, California

Brief Legal Description OVERHISER ROAD 40'+/- NORTHWEST OF STATE HIGHWAY ROUTE 88



CORNER TYPE

Government Corner ☐ Control ☐
Meander ☐ Property ☐
Rancho ☐ Other ☒

Date of Survey September 28, 2009

COORDINATES (Optional)

N. _____
E. _____
Zone _____ NAD27 ☐ NAD83 ☐
NAD83 Epoch _____
Elev. _____
Vert. Datum: NGVD29 ☐ NAVD88 ☐
Meas. Units: Metric ☐ Imperial ☒

Corner - Left as found ☐ Found and tagged ☐ Established ☐ Reestablished ☐ Rebuilt ☒

Identification and type of corner found: Evidence used to identify or procedure used to establish or reestablish the corner:
SEE SKETCH ON BACKSIDE.

A description of the physical condition of the monument as found and as set or reset:
SEE SKETCH ON BACKSIDE.

SURVEYOR'S STATEMENT

This Corner Record was prepared by me or under my direction in conformance with the Land Surveyors' Act on 3/9/, 2010.

Signed [Signature] R.C.E. Number 8470

COUNTY SURVEYOR'S STATEMENT

This Corner Record was received MARCH 10, 2010 and examined and filed MARCH 26, 2010.

Signed Thomas M. Gau P.L.S. No. 23341

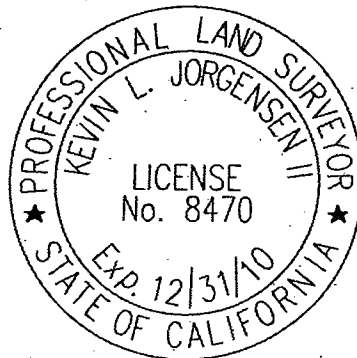
for Title County Surveyor

County Surveyor's Comment _____

THIS CORNER RECORD IS NOT IN COMPLIANCE WITH BOARD RULE 464(c)

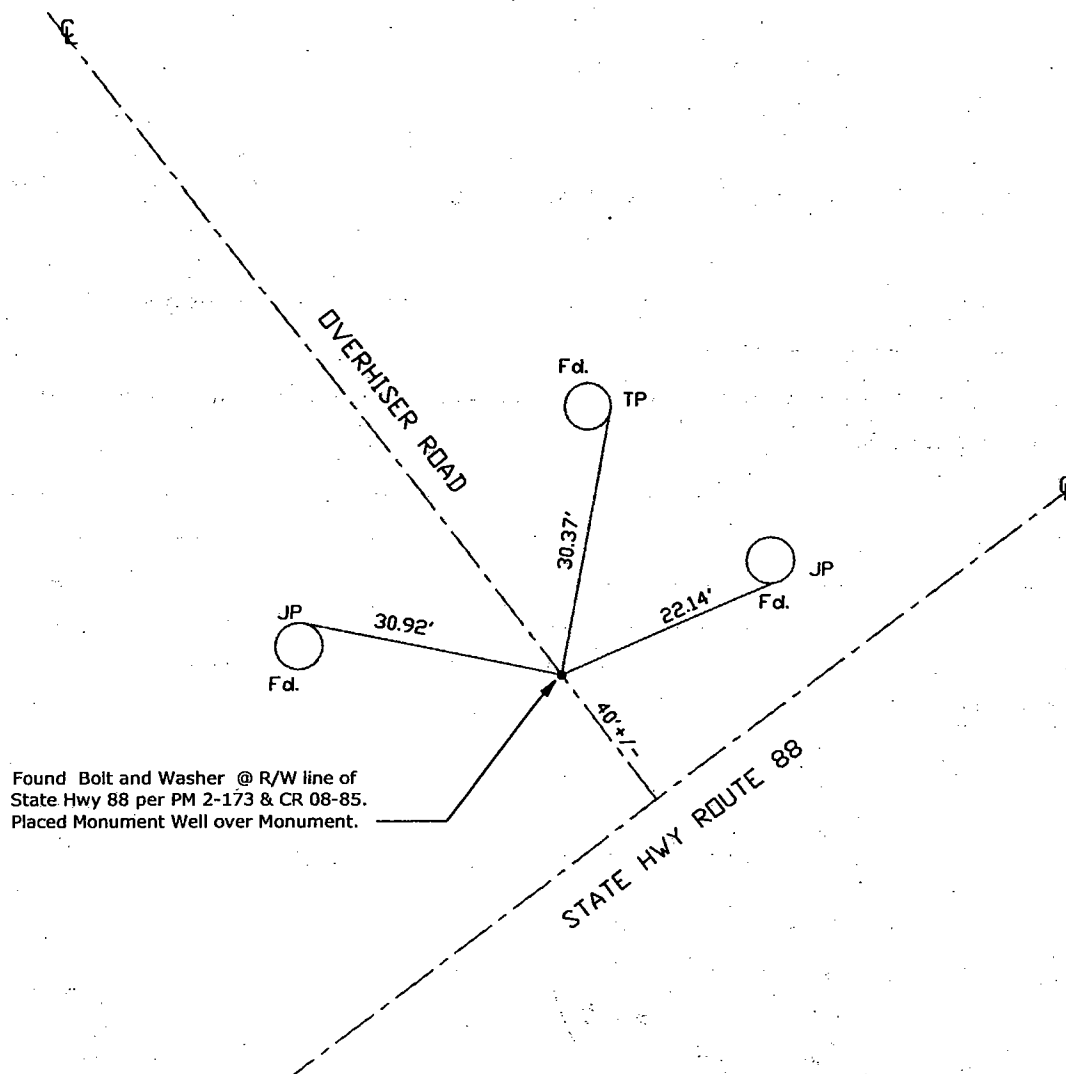
REGARDING SUBMITTAL WITHIN 90 DAYS FROM THE DATE OF SURVEY.

(D.D. Sheet No. 32)
Job No. 220749





N.T.S.



Note: Found Monuments are not tagged unless otherwise noted.

"No Attempt Was Made to Verify the Monument(s)"

FP=Fence Post

GP=Guy Post

JP=Joint Pole

PP=Power Pole

SP=Service Pole

TP=Telephone Pole

S.F.N=Searched Found Nothing

N.T.S.=Not To Scale

Fd.=Conc. Nail with Brass Washer Stamped

"S.J. Co.", unless otherwise noted

01 HSWAN

Handwritten signature and date: 10/20/85

107