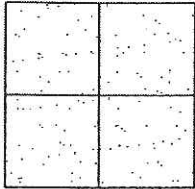


CORNER RECORD

City of —

Document Number CR-09-81
County of San Joaquin, California

Brief Legal Description RIVER ROAD @ SANTA FE ROAD AND RIVER ROAD @ SEIDNER AVENUE



CORNER TYPE

Government Corner ☐ Control ☐
Meander ☐ Property ☐
Rancho ☐ Other ☒

Date of Survey June 23, 2009

COORDINATES (Optional)

N. _____
E. _____
Zone _____ NAD27 ☐ NAD83 ☐
NAD83 Epoch _____
Elev. _____
Vert. Datum: NGVD29 ☐ NAVD88 ☐
Meas. Units: Metric ☐ Imperial ☒

Corner - Left as found ☒ Found and tagged ☐ Established ☐ Reestablished ☐ Rebuilt ☐

Identification and type of corner found: Evidence used to identify or procedure used to establish or reestablish the corner:
SEE SKETCH ON BACKSIDE.

A description of the physical condition of the monument as found and as set or reset:
SEE SKETCH ON BACKSIDE.

SURVEYOR'S STATEMENT

This Corner Record was prepared by me or under my direction in conformance with the Land Surveyors' Act on October 20, 2009.

Signed *Kevin L. Jorgensen* P.L.S. Number 8470

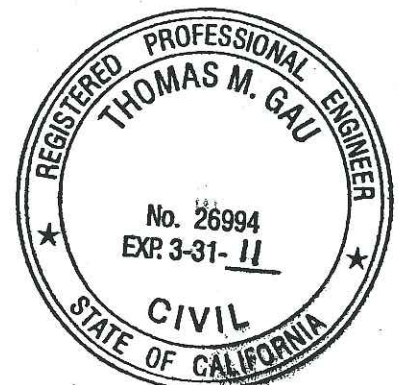
COUNTY SURVEYOR'S STATEMENT

This Corner Record was received OCTOBER 22, 2009 and examined and filed OCTOBER 26, 2009.

Signed *Thomas M. Gau* R.C.E. No. 23341

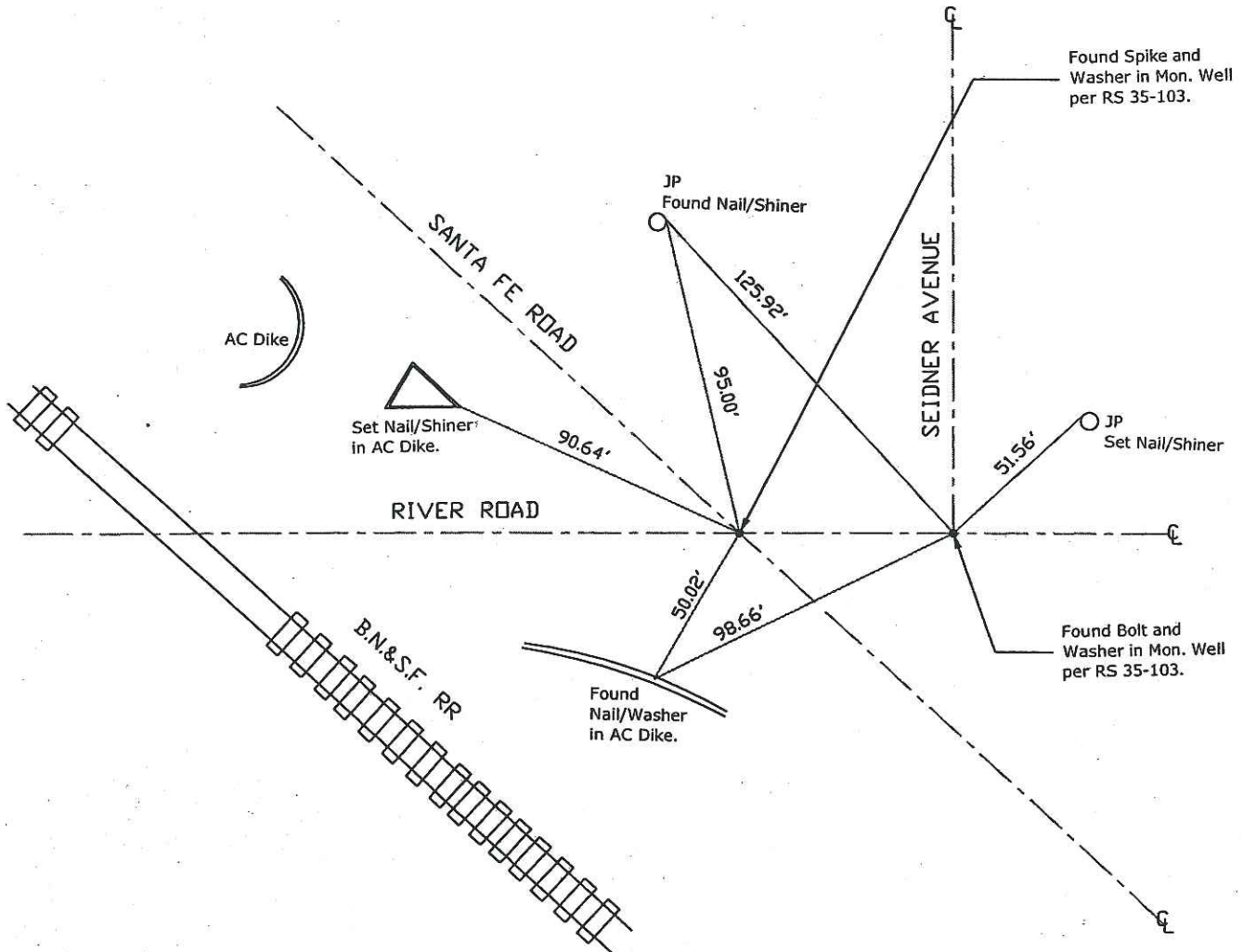
FOR Title County Surveyor

County Surveyor's Comment _____





N.T.S.



Note: Found Monuments are not tagged
nor of Record, Unless otherwise noted.

"No Attempt Was Made to Verify the Monument(s)"

NTS= Not to Scale

FP=Fence Post

GP=Guy Post

JP=Joint Pole

PP=Power Pole

SP=Service Pole

TP=Telephone Pole

S.F.N=Searched Found Nothing

N.T.S.=Not To Scale

Set=Conc. Nail with Brass Washer Stamped

"S.J. Co." unless otherwise noted