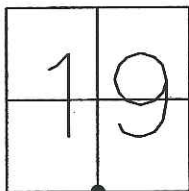


CORNER RECORD

Document Number CR-09-77

City of RIPON County of SAN JOAQUIN, California

Brief Legal Description SOUTH 1/4 CORNER SECTION 19, T.2S., R.8E., M.D.B.&M.



T2S, R8E

Government Corner ☒ Control ☐
 Meander ☐ Property ☐
 Rancho ☐ Other ☐
 Date of Survey 9-17-2009

COORDINATES (Optional)

N. _____
 E. _____
 Zone _____ NAD27 ☐ NAD83 ☐
 NAD83 Epoch _____
 Elev. _____
 Vert. Datum: NGVD29 ☐ NAVD88 ☐
 Meas. Units: Metric ☐ Imperial ☒

Corner - Left as found ☐ Found and tagged ☐ Established ☐ Reestablished ☒ Rebuilt ☐

Identification and type of corner found: Evidence used to identify or procedure used to establish or reestablished the corner:
BRASS DISK IN MONUMENT WELL AT THE SOUTH 1/4 CORNER OF SECTION 19, T.2S., R.8E.,
M.D.B.&M. AT THE INTERSECTION OF VERA AVENUE AND W. MAIN STREET WAS DESTROYED DURING
CONSTRUCTION OF W. MAIN STREET. USED FOUND EXISTING MONUMENTS (AS SHOWN ON DIAGRAM
PAGE 2) REFERENCED AND SHOWN ON BOOK 23 OF PARCEL MAPS, AT PAGE 51, SAN JOAQUIN
COUNTY RECORDS.

A description of the physical condition of the monument as found and as set or reset: _____
SET 3/4" x 30" IRON PIPE WITH PLASTIC PLUG STAMPED L.S. 6953 IN MONUMENT WELL.

This Corner Record was prepared by me or under my direction in conformance with the Land Surveyors' Act on SEPTEMBER 25, 2009.

Signed Thomas M. Gau L.S. 6953



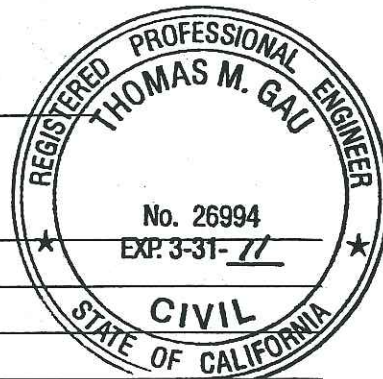
COUNTY SURVEYOR'S STATEMENT

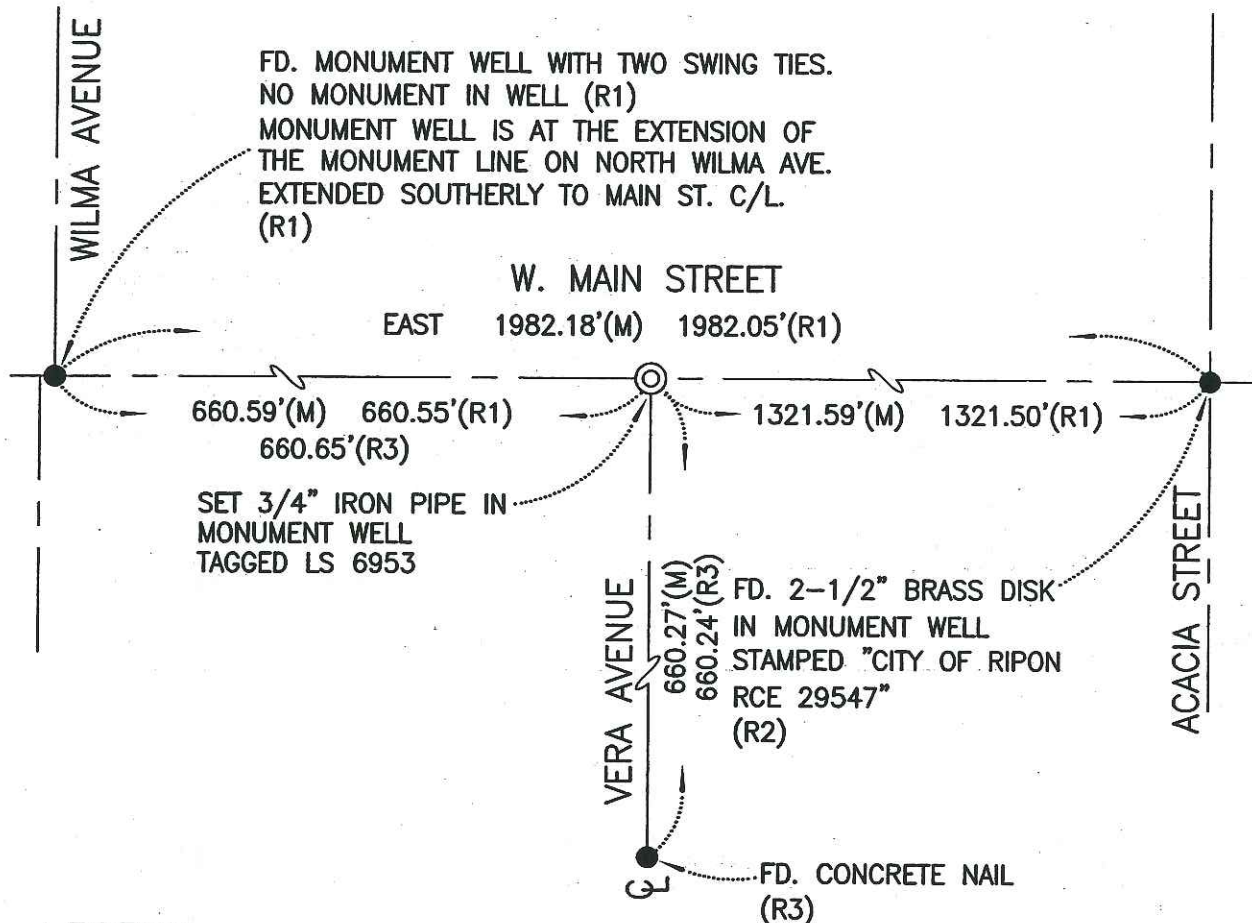
This Corner Record was received OCT. 8, 2009 and examined and filed OCTOBER 23, 2009.

Signed Thomas M. Gau P.L.S. or R.C.E. No. 23341

FOR Title COUNTY SURVEYOR

County Surveyors Comment _____





LEGEND:

- ⊙ SET MONUMENT AS NOTED
- FOUND MONUMENT AS NOTED
- S.J.C.R. DENOTES SAN JOAQUIN COUNTY RECORDS
- C.R. CORNER RECORD
- P.M. DENOTES PARCEL MAP, BOOK-PAGE, S.J.C.R.
- R.S. DENOTES RECORD OF SURVEY, BOOK-PAGE, S.J.C.R.

REFERENCES:

- (R1) PM. 23-51, S.J.C.R.
- (R2) C.R.-95-022
- (R3) RS. 33-46, S.J.C.R.

NOT TO SCALE