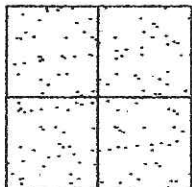


CORNER RECORD

Document Number CR-09-76
County of San Joaquin, California

City of _____

Brief Legal Description INDIANA STREET @ OLIVE STREET IN TOWN OF WOODBRIDGE
(WITHIN SECTION 34, TOWNSHIP 4 NORTH, RANGE 6 EAST)



CORNER TYPE

Government Corner ☐ Control ☐
Meander ☐ Property ☐
Rancho ☐ Other ☒

Date of Survey May 22, 2009

COORDINATES (Optional)

N. _____
E. _____
Zone _____ NAD27 ☐ NAD83 ☐
NAD83 Epoch _____
Elev. _____
Vert. Datum: NGVD29 ☐ NAVD88 ☐
Meas. Units: Metric ☐ Imperial ☒

Corner - Left as found ☐ Found and tagged ☐ Established ☐ Reestablished ☒ Rebuilt ☐

Identification and type of corner found: Evidence used to identify or procedure used to establish or reestablish the corner:
INTERSECTION POINT WAS REESTABLISHED BASED ON TIES FROM CR 09-15, SAN JOAQUIN COUNTY SURVEYOR'S RECORDS.

A description of the physical condition of the monument as found and as set or reset: _____
SEE SKETCH ON BACKSIDE.

SURVEYOR'S STATEMENT

This Corner Record was prepared by me or under my direction in conformance with
the Land Surveyors' Act on 10/12/09, 2009.

Signed [Signature] P.L.S. Number 8470

COUNTY SURVEYOR'S STATEMENT

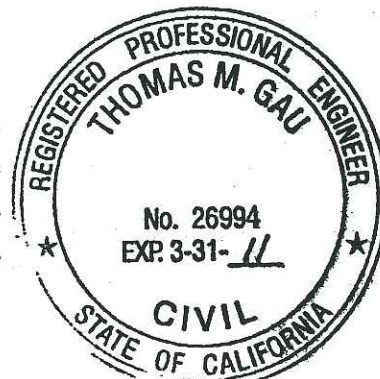
This Corner Record was received OCT. 12, 2009 and examined
and filed OCTOBER 23, 2009.

Signed [Signature] R.C.E. No. 23341

FOR Title County Surveyor

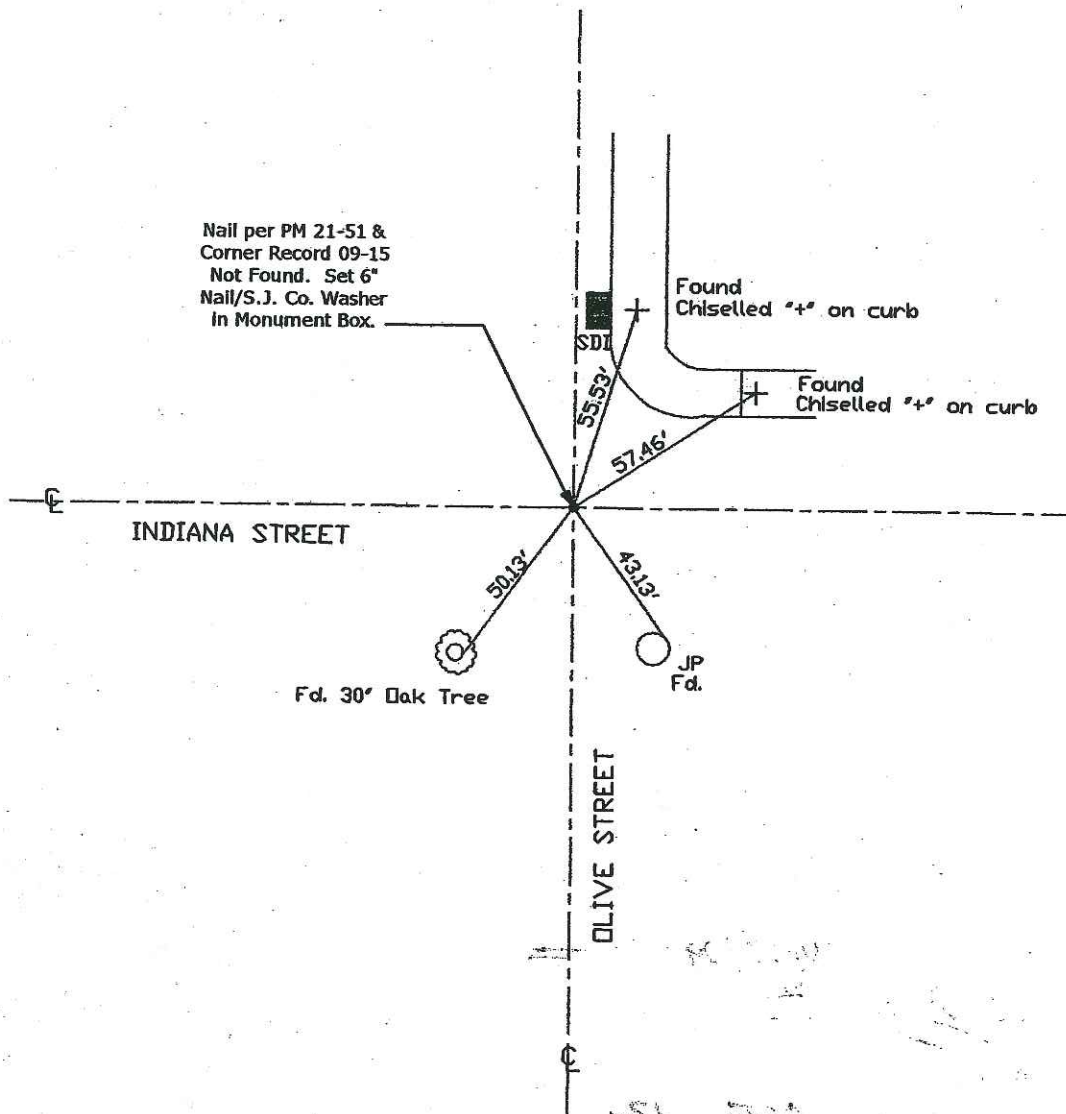
County Surveyor's Comment _____

(D.D. Sheet No. 12A)
(Job No. 220772)





N.T.S.



"No Attempt Was Made to Verify the Monument(s)"

FP=Fence Post
GP=Guy Post
JP=Joint Pole
LP=Lamp Pole
PP=Power Pole
RS=Record of Survey
SP=Service Pole
TP=Telephone Pole
SDI=Storm Drain Inlet
S.F.N=Searched Found Nothing
N.T.S.=Not To Scale
Fd.=Conc. Nail with Brass Washer Stamped
"S.J. Co." unless otherwise noted

Notes: (1) Found Monuments are not tagged unless otherwise noted.
(2) All references pertain to San Joaquin County unless otherwise noted.