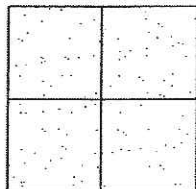


# CORNER RECORD

Document Number CR-09-64  
 County of San Joaquin, California

City of \_\_\_\_\_

Brief Legal Description LOCKHART ROAD @ HOWARD ROAD



## CORNER TYPE

Government Corner ☐ Control ☐  
 Meander ☐ Property ☐  
 Rancho ☐ Other ☒  
 Date of Survey March 11, 2009

## COORDINATES (Optional)

N. \_\_\_\_\_  
 E. \_\_\_\_\_  
 Zone \_\_\_\_\_ NAD27 ☐ NAD83 ☐  
 NAD83 Epoch \_\_\_\_\_  
 Elev. \_\_\_\_\_  
 Vert. Datum: NGVD29 ☐ NAVD88 ☐  
 Meas. Units: Metric ☐ Imperial ☒

Corner - Left as found ☒ Found and tagged ☐ Established ☐ Reestablished ☐ Rebuilt ☐

Identification and type of corner found: Evidence used to identify or procedure used to establish or reestablish the corner:  
SEE SKETCH ON BACKSIDE.

A description of the physical condition of the monument as found and as set or reset:  
SEE SKETCH ON BACKSIDE.

## SURVEYOR'S STATEMENT

This Corner Record was prepared by me or under my direction in conformance with the Land Surveyors' Act on June 18, 2009.

Signed [Signature] P.L.S. Number 8470

## COUNTY SURVEYOR'S STATEMENT

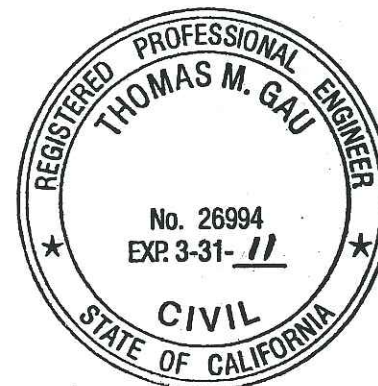
This Corner Record was received June 22, 2009 and examined and filed July 15, 2009.

Signed Thomas M. Gau R.C.E. No. 23341

**FOR** Title County Surveyor

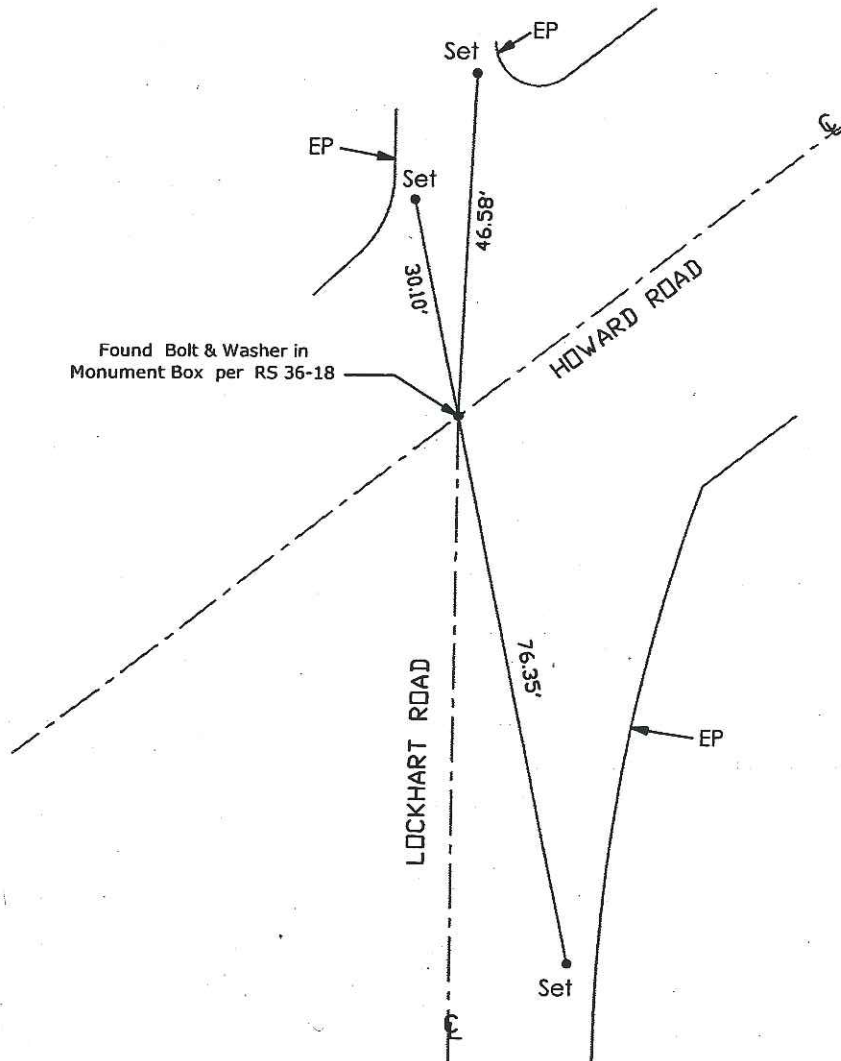
County Surveyor's Comment \_\_\_\_\_

(D.D. Sheet No. 34 )  
 (Job No. 220796)





N.T.S.



Note: Found Monuments are not tagged  
unless otherwise noted.

"No Attempt Was Made to Verify the Monument(s)"

EP=Edge of Pavement

FP=Fence Post

GP=Guy Post

JP=Joint Pole

LP=Lamp Pole

PP=Power Pole

RS=Record of Survey

SP=Service Pole

TP=Telephone Pole

SDI=Storm Drain Inlet

S.F.N=Searched Found Nothing

N.T.S.=Not To Scale

Set=Conc. Nail with Brass Washer Stamped

"S.J. Co.", unless otherwise noted