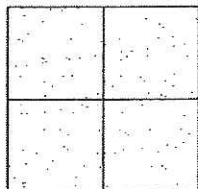


CORNER RECORD

Document Number CR-09-56
 County of San Joaquin, California

City of _____

Brief Legal Description DEPOT MASTER DRIVE 42' NORTH OF LINNE ROAD



CORNER TYPE

Government Corner ☐ Control ☐
 Meander ☐ Property ☐
 Rancho ☐ Other ☒

Date of Survey May 7, 2009

COORDINATES (Optional)

N. _____
 E. _____
 Zone _____ NAD27 ☐ NAD83 ☐
 NAD83 Epoch _____
 Elev. _____
 Vert. Datum: NGVD29 ☐ NAVD88 ☐
 Meas. Units: Metric ☐ Imperial ☒

Corner - Left as found ☒ Found and tagged ☐ Established ☐ Reestablished ☐ Rebuilt ☐

Identification and type of corner found: Evidence used to identify or procedure used to establish or reestablish the corner:
SEE SKETCH ON BACKSIDE.

A description of the physical condition of the monument as found and as set or reset:
SEE SKETCH ON BACKSIDE.

SURVEYOR'S STATEMENT

This Corner Record was prepared by me or under my direction in conformance with the Land Surveyors' Act on June 18, 2009.

Signed [Signature] P.L.S. Number 8470

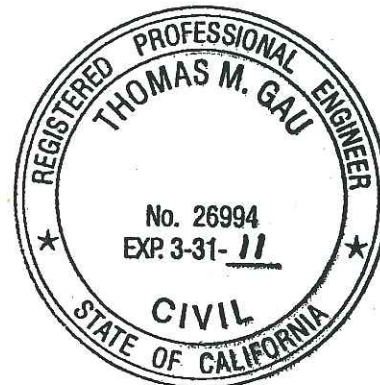
COUNTY SURVEYOR'S STATEMENT

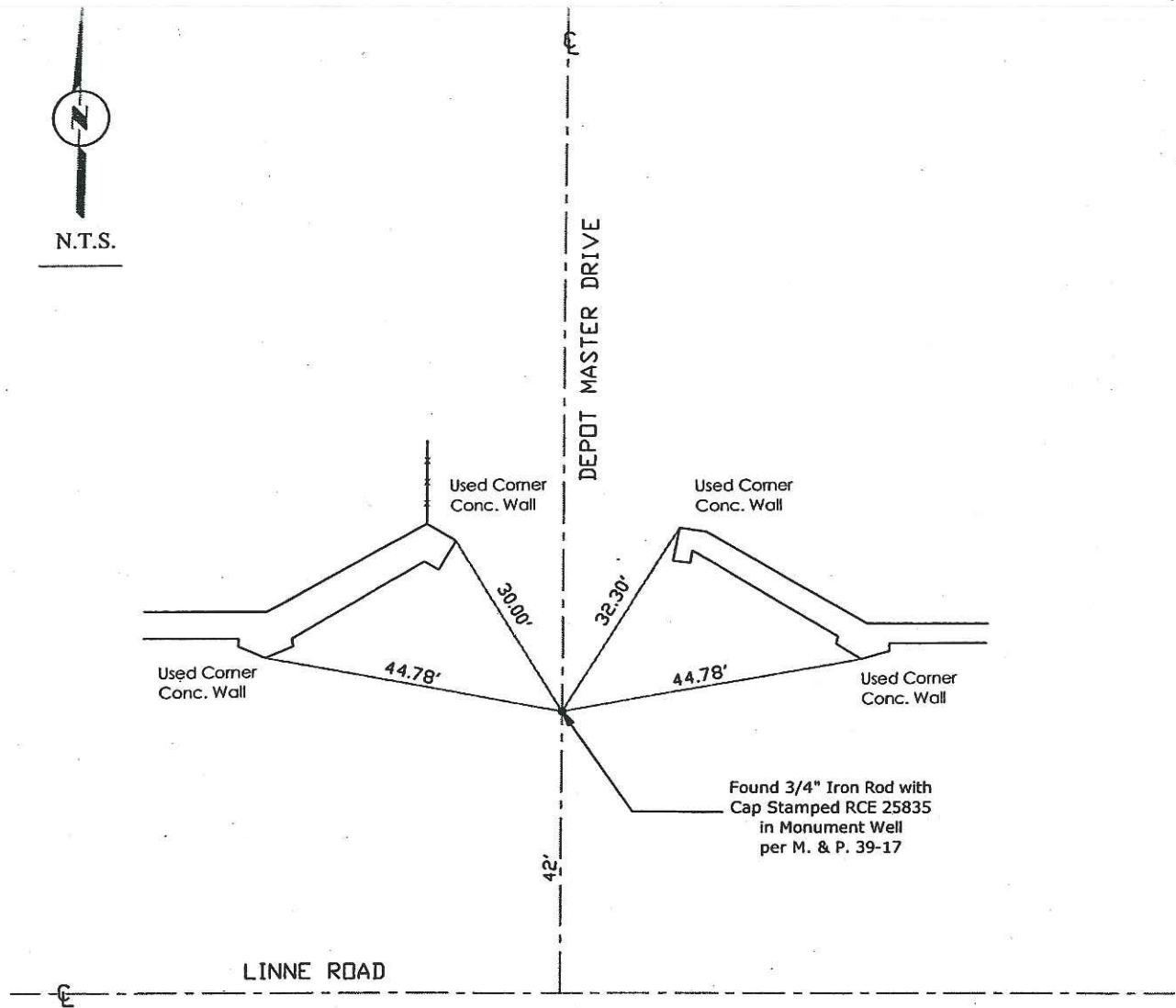
This Corner Record was received June 22, 2009 and examined and filed July 15, 2009.

Signed Thomas M. Gau R.C.E. No. 23341

For Title County Surveyor

County Surveyor's Comment _____





Note: Found Monuments are not tagged unless otherwise noted.

"No Attempt Was Made to Verify the Monument(s)"

FP=Fence Post
 GP=Guy Post
 JP=Joint Pole
 LP=Lamp Pole
 PP=Power Pole
 RS=Record of Survey
 SP=Service Pole
 TP=Telephone Pole
 SDI=Storm Drain Inlet
 S.F.N=Searched Found Nothing
 N.T.S.=Not To Scale
 Set=Conc. Nail with Brass Washer Stamped
 "S.J. Co." unless otherwise noted