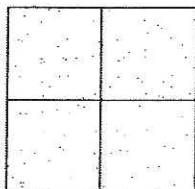


CORNER RECORD

Document Number CR-09-53
County of San Joaquin, California

City of _____
Brief Legal Description AUSTIN ROAD 872' SOUTH OF LYNCH ROAD



CORNER TYPE

Government Corner ☐ Control ☐
Meander ☐ Property ☐
Rancho ☐ Other ☒

Date of Survey April 14, 2009

COORDINATES (Optional)

N. _____
E. _____
Zone _____ NAD27 ☐ NAD83 ☐
NAD83 Epoch _____
Elev. _____
Vert. Datum: NGVD29 ☐ NAVD88 ☐
Meas. Units: Metric ☐ Imperial ☒

Corner - Left as found ☐ Found and tagged ☐ Established ☐ Reestablished ☐ Rebuilt ☒

Identification and type of corner found: Evidence used to identify or procedure used to establish or reestablish the corner:
SEE SKETCH ON BACKSIDE.

A description of the physical condition of the monument as found and as set or reset: _____
SEE SKETCH ON BACKSIDE.

SURVEYOR'S STATEMENT

This Corner Record was prepared by me or under my direction in conformance with
the Land Surveyors' Act on May 11, 2009.

Signed [Signature] P.L.S. Number 8470

COUNTY SURVEYOR'S STATEMENT

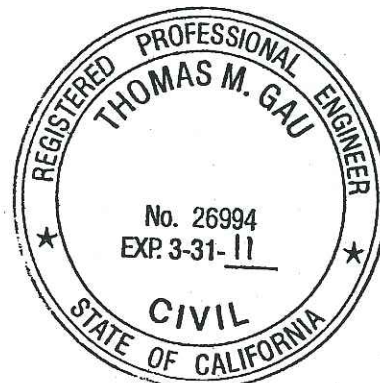
This Corner Record was received MAY 11, 2009 and examined
and filed MAY 19, 2009.

Signed [Signature] R.C.E. No. 23341

FOR Title County Surveyor

County Surveyor's Comment _____

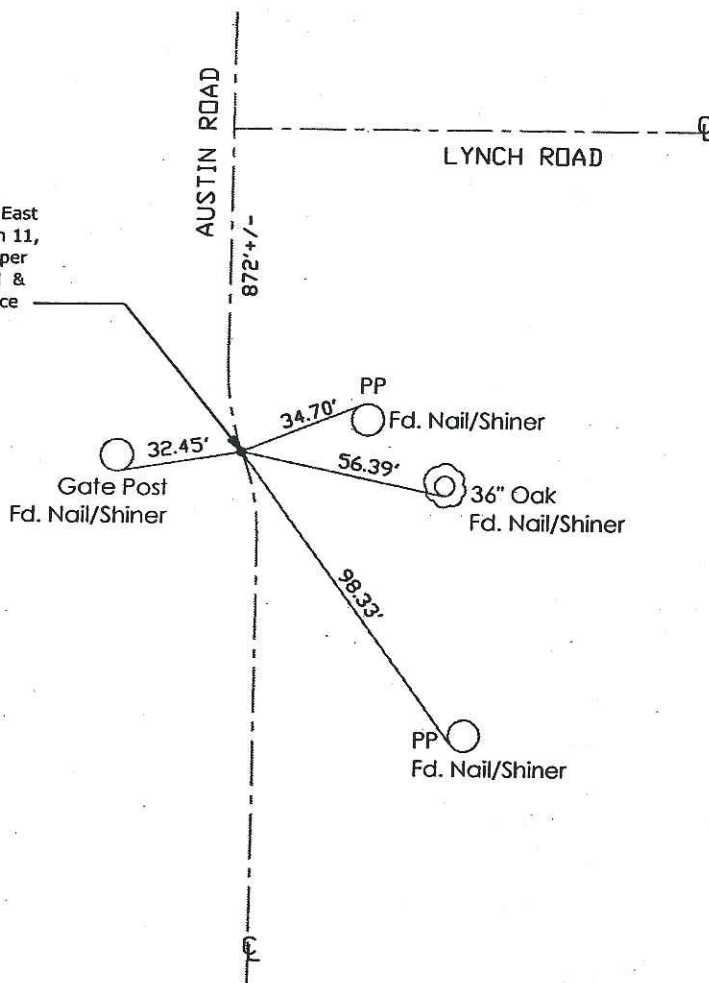
(D.D. Sheet No. 46)
(Job No. 750108)





N.T.S.

Fd. SJ Co Brass Bolt & Washer 15.01' East
of the West 1/4 Sec. Corner of Section 11,
Township 1 South, Range 7 East per
RS 27-193, 6" deep. Set 6" Nail &
Washer Stamped SJ CO on Surface



Note: Found Monuments are not tagged
unless otherwise noted.

"No Attempt Was Made to Verify the Monument(s)"

FP=Fence Post

GP=Guy Post

JP=Joint Pole

LP=Lamp Pole

PP=Power Pole

RS=Record of Survey

SP=Service Pole

TP=Telephone Pole

SDI=Storm Drain Inlet

S.F.N=Searched Found Nothing

N.T.S.=Not To Scale

Set=Conc. Nail with Brass Washer Stamped

"S.J. Co." unless otherwise noted