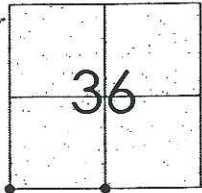


CORNER RECORD

Document Number CR-09-52
 County of San Joaquin, California

City of _____

Brief Legal Description LIBERTY ROAD 161' WEST AND 2864' WEST OF STATE HIGHWAY ROUTE 88
SOUTH QUARTER CORNER AND SOUTHWEST CORNER OF SECTION 36



T5N R8E

CORNER TYPE

Government Corner ☒ Control ☐
 Meander ☐ Property ☐
 Rancho ☐ Other ☐
 Date of Survey February 26, 2009

COORDINATES (Optional)

N. _____
 E. _____
 Zone _____ NAD27 ☐ NAD83 ☐
 NAD83 Epoch _____
 Elev. _____
 Vert. Datum: NGVD29 ☐ NAVD88 ☐
 Meas. Units: Metric ☐ Imperial ☒

Corner - Left as found ☒ Found and tagged ☐ Established ☐ Reestablished ☐ Rebuilt ☐

Identification and type of corner found: Evidence used to identify or procedure used to establish or reestablish the corner:
SEE SKETCH ON BACKSIDE.

A description of the physical condition of the monument as found and as set or reset:
SEE SKETCH ON BACKSIDE.

SURVEYOR'S STATEMENT

This Corner Record was prepared by me or under my direction in conformance with
 the Land Surveyors' Act on May 11, 2009.

Signed [Signature] P.L.S. Number 8470

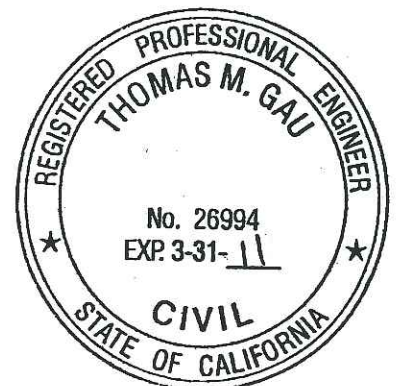
COUNTY SURVEYOR'S STATEMENT

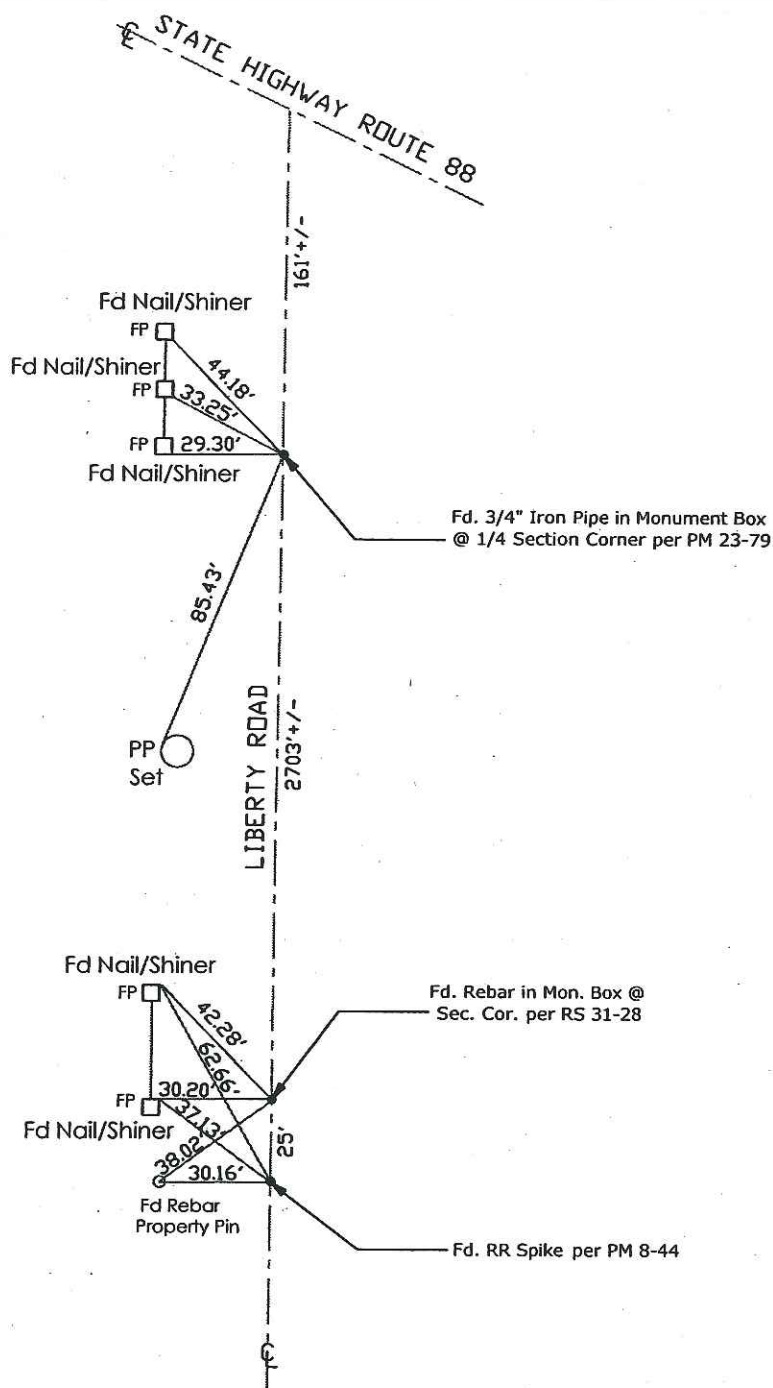
This Corner Record was received MAY 11, 2009 and examined
 and filed MAY 19, 2009.

Signed [Signature] R.C.E. No. 23341

Fid. Title County Surveyor

County Surveyor's Comment _____





Note: Found Monuments are not tagged
unless otherwise noted.

"No Attempt Was Made to Verify the Monument(s)"

FP=Fence Post

GP=Guy Post

JP=Joint Pole

LP=Lamp Pole

PP=Power Pole

RS=Record of Survey

SP=Service Pole

TP=Telephone Pole

SDI=Storm Drain Inlet

S.F.N=Searched Found Nothing

N.T.S.=Not To Scale

Set=Conc. Nail with Brass Washer Stamped

"S.J. Co.", unless otherwise noted