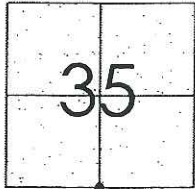


# CORNER RECORD

Document Number CR-09-51  
 City of \_\_\_\_\_ County of San Joaquin, California

Brief Legal Description LIBERTY ROAD 5527' WEST OF STATE HIGHWAY ROUTE 88  
SOUTH QUARTER CORNER OF SECTION 35



T5N R8E

## CORNER TYPE

Government Corner ☒ Control ☐  
 Meander ☐ Property ☐  
 Rancho ☐ Other ☐  
 Date of Survey February 25, 2009

## COORDINATES (Optional)

N. \_\_\_\_\_  
 E. \_\_\_\_\_  
 Zone \_\_\_\_\_ NAD27 ☐ NAD83 ☐  
 NAD83 Epoch \_\_\_\_\_  
 Elev. \_\_\_\_\_  
 Vert. Datum: NGVD29 ☐ NAVD88 ☐  
 Meas. Units: Metric ☐ Imperial ☒

Corner - Left as found ☒ Found and tagged ☐ Established ☐ Reestablished ☐ Rebuilt ☐

Identification and type of corner found; Evidence used to identify or procedure used to establish or reestablish the corner:  
SEE SKETCH ON BACKSIDE.

A description of the physical condition of the monument as found and as set or reset:  
SEE SKETCH ON BACKSIDE.

## SURVEYOR'S STATEMENT

This Corner Record was prepared by me or under my direction in conformance with  
 the Land Surveyors' Act on May 11, 2009.

Signed [Signature] P.L.S. Number 8470

## COUNTY SURVEYOR'S STATEMENT

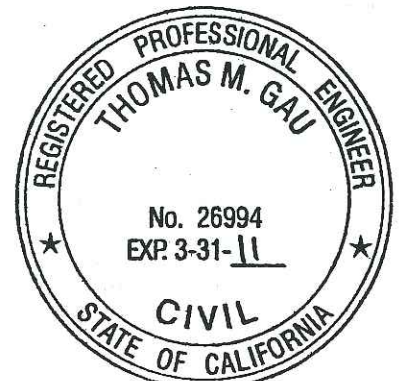
This Corner Record was received MAY 11, 2009 and examined  
 and filed MAY 19, 2009.

Signed Thomas M. Gau R.C.E. No. 23341

FOR Title County Surveyor

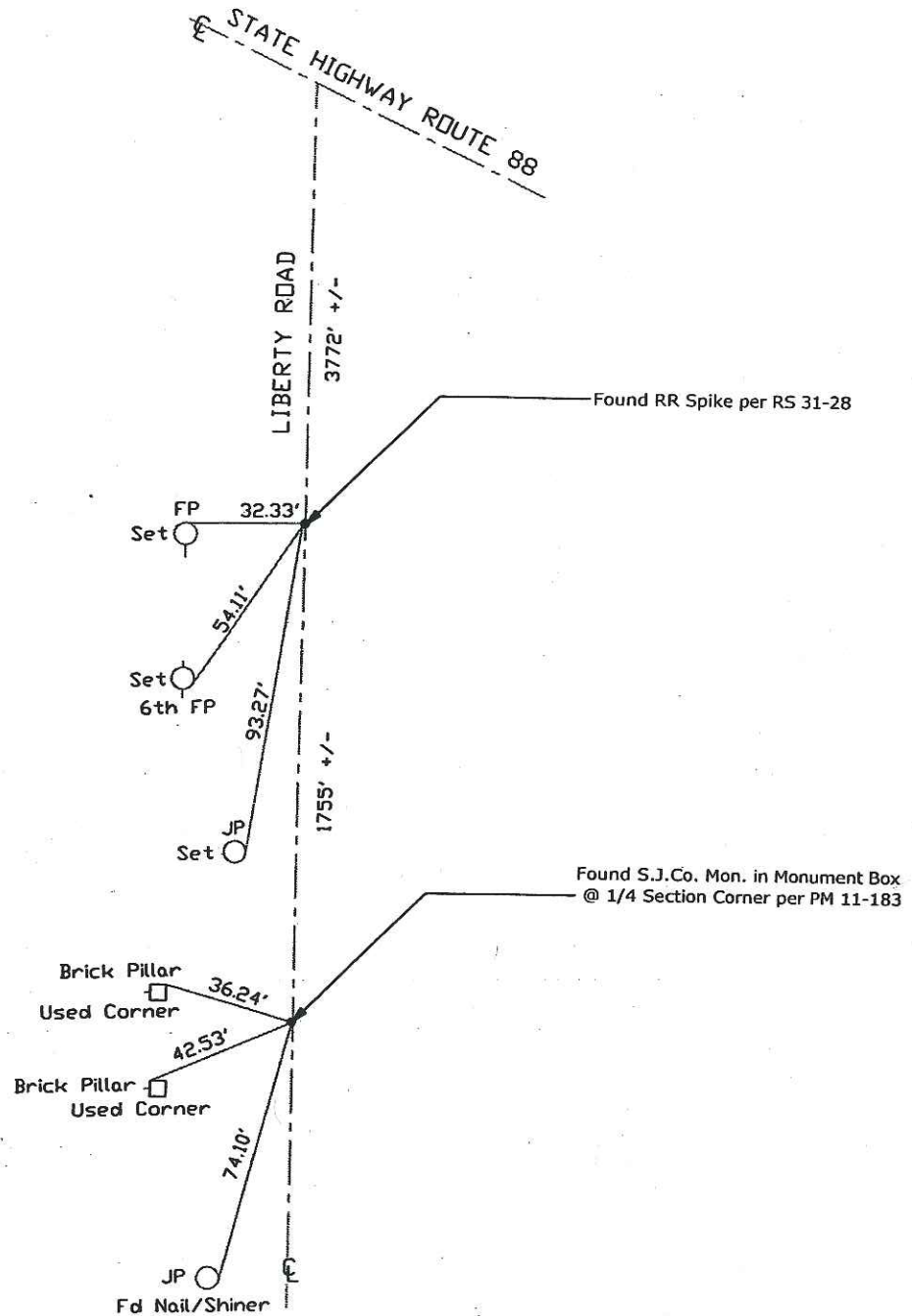
County Surveyor's Comment \_\_\_\_\_

(D.D. Sheet Nos. 5 & 8 )  
 (Job No. 220728)





N.T.S.



Note: Found Monuments are not tagged unless otherwise noted.

"No Attempt Was Made to Verify the Monument(s)"

FP=Fence Post  
 GP=Guy Post  
 JP=Joint Pole  
 LP=Lamp Pole  
 PP=Power Pole  
 RS=Record of Survey  
 SP=Service Pole  
 TP=Telephone Pole  
 SDI=Storm Drain Inlet  
 S.F.N=Searched Found Nothing  
 N.T.S.=Not To Scale  
 Set=Conc. Nail with Brass Washer Stamped  
 "S.J. Co.", unless otherwise noted