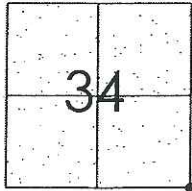


CORNER RECORD

Document Number CR-09-50
 County of San Joaquin, California

City of _____

Brief Legal Description LIBERTY ROAD 2705' EAST OF MACKVILLE ROAD
SOUTHEAST CORNER OF SECTION 34



T5N R8E

CORNER TYPE

Government Corner ☒ Control ☐
 Meander ☐ Property ☐
 Rancho ☐ Other ☐
 Date of Survey February 25, 2009

COORDINATES (Optional)

N. _____
 E. _____
 Zone _____ NAD27 ☐ NAD83 ☐
 NAD83 Epoch _____
 Elev. _____
 Vert. Datum: NGVD29 ☐ NAVD88 ☐
 Meas. Units: Metric ☐ Imperial ☒

Corner - Left as found ☒ Found and tagged ☐ Established ☐ Reestablished ☐ Rebuilt ☐

Identification and type of corner found: Evidence used to identify or procedure used to establish or reestablish the corner:
SEE SKETCH ON BACKSIDE.

A description of the physical condition of the monument as found and as set or reset:
SEE SKETCH ON BACKSIDE.

SURVEYOR'S STATEMENT

This Corner Record was prepared by me or under my direction in conformance with
 the Land Surveyors' Act on May 11, 2009.

Signed [Signature] P.L.S. Number 8470

COUNTY SURVEYOR'S STATEMENT

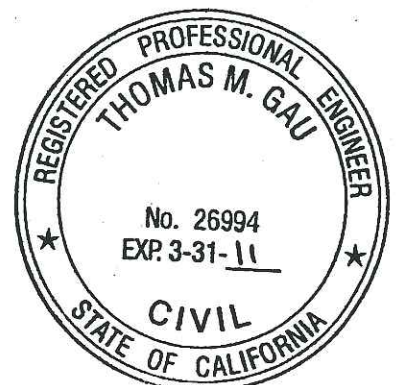
This Corner Record was received MAY 11, 2009 and examined
 and filed MAY 19, 2009.

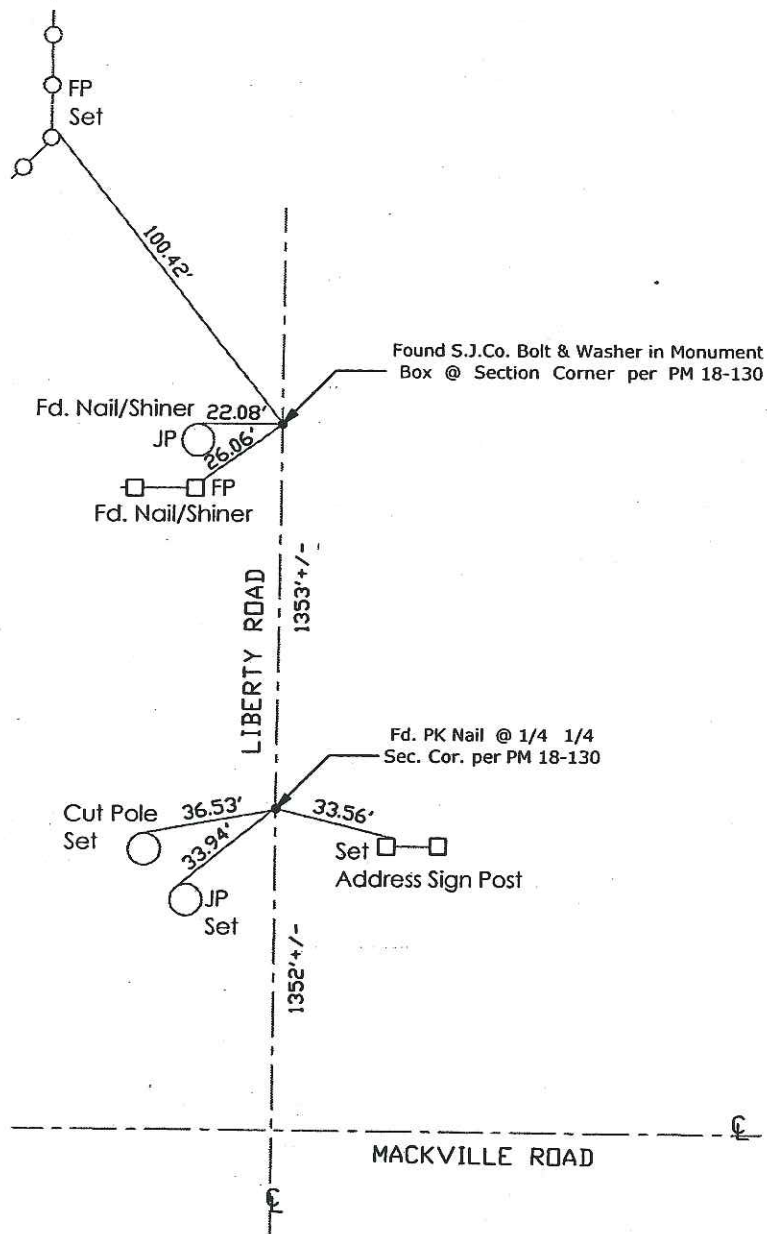
Signed [Signature] R.C.E. No. 23341

FDR Title County Surveyor

County Surveyor's Comment _____

(D.D. Sheet Nos. 4, 5, 8 & 9)
 (Job No. 220728)





Note: Found Monuments are not tagged unless otherwise noted.

"No Attempt Was Made to Verify the Monument(s)"

FP=Fence Post
 GP=Guy Post
 JP=Joint Pole
 LP=Lamp Pole
 PP=Power Pole
 RS=Record of Survey
 SP=Service Pole
 TP=Telephone Pole
 SDI=Storm Drain Inlet
 S.F.N=Searched Found Nothing
 N.T.S.=Not To Scale
 Set=Conc. Nail with Brass Washer Stamped
 "S. J. Co." unless otherwise noted