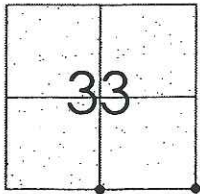


CORNER RECORD

Document Number CR-09-48
 City of _____ County of San Joaquin, California

Brief Legal Description LIBERTY ROAD 5347' WEST AND 2680' WEST OF MACKVILLE ROAD
SOUTH QUARTER CORNER AND SOUTHEAST CORNER OF SECTION 33



T5N R8E

CORNER TYPE

Government Corner ☒ Control ☐
 Meander ☐ Property ☐
 Rancho ☐ Other ☐
 Date of Survey February 25, 2009

COORDINATES (Optional)

N. _____
 E. _____
 Zone _____ NAD27 ☐ NAD83 ☐
 NAD83 Epoch _____
 Elev. _____
 Vert. Datum: NGVD29 ☐ NAVD88 ☐
 Meas. Units: Metric ☐ Imperial ☒

Corner - Left as found ☒ Found and tagged ☐ Established ☐ Reestablished ☐ Rebuilt ☐

Identification and type of corner found: Evidence used to identify or procedure used to establish or reestablish the corner:
SEE SKETCH ON BACKSIDE.

A description of the physical condition of the monument as found and as set or reset: _____
SEE SKETCH ON BACKSIDE.

SURVEYOR'S STATEMENT

This Corner Record was prepared by me or under my direction in conformance with
 the Land Surveyors' Act on May 11, 2009.

Signed [Signature] P.L.S. Number 8470

COUNTY SURVEYOR'S STATEMENT

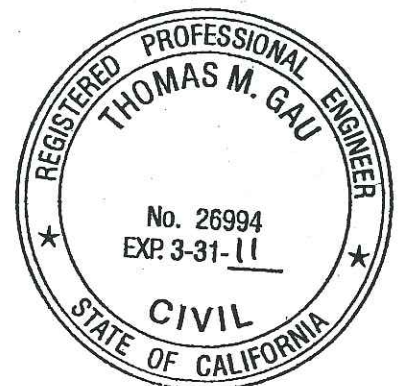
This Corner Record was received MAY 11, 2009 and examined
 and filed MAY 19, 2009.

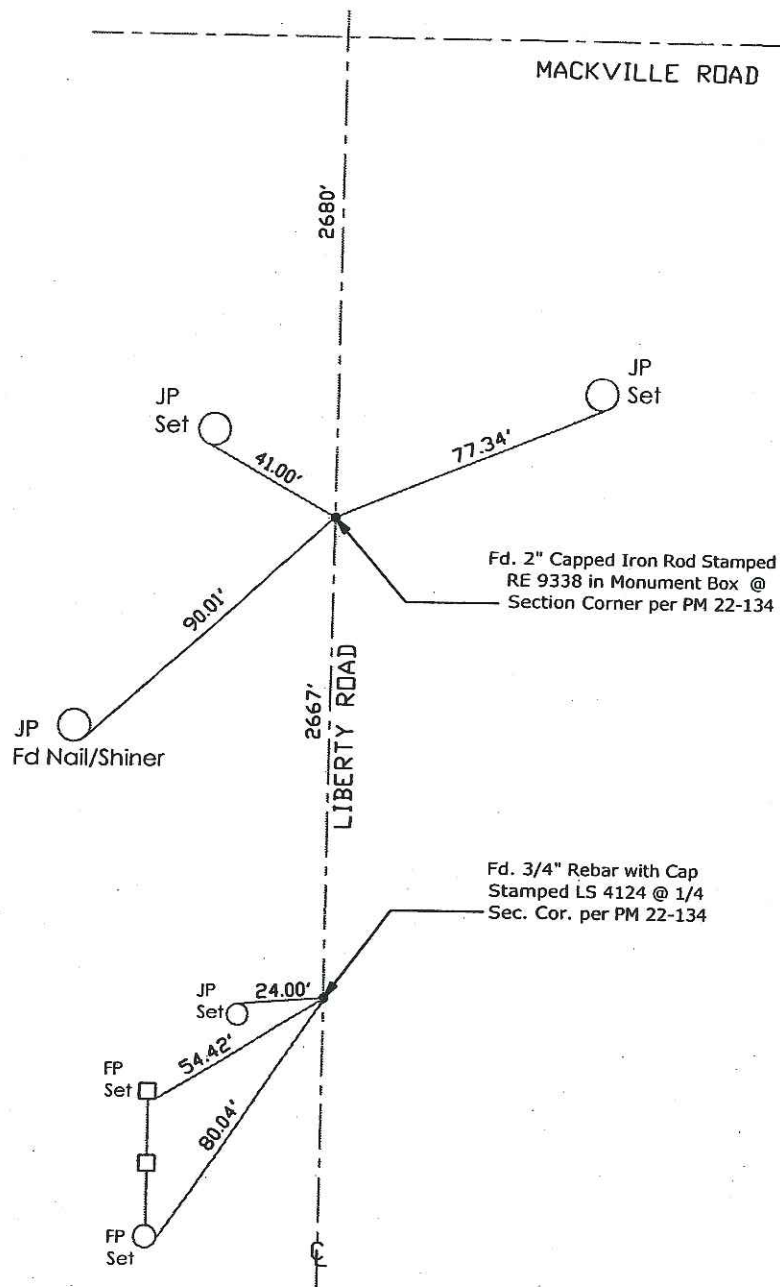
Signed Thomas M. Gau R.C.E. No. 23341

Title County Surveyor

County Surveyor's Comment _____

(D.D. Sheet Nos. 4 & 9)
 (Job No. 220728)





Note: Found Monuments are not tagged
unless otherwise noted.

"No Attempt Was Made to Verify the Monument(s)"

FP=Fence Post
GP=Guy Post
JP=Joint Pole
LP=Lamp Pole
PP=Power Pole
RS=Record of Survey
SP=Service Pole
TP=Telephone Pole
SDI=Storm Drain Inlet
S.F.N=Searched Found Nothing
N.T.S.=Not To Scale
Set=Conc. Nail with Brass Washer Stamped
"S.J. Co." unless otherwise noted