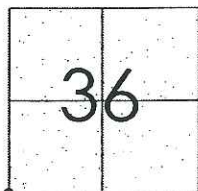


# CORNER RECORD

Document Number CR-09-43  
 County of San Joaquin, California

City of \_\_\_\_\_

Brief Legal Description ELLIOTT ROAD @ LIBERTY ROAD  
SOUTHWEST CORNER OF SECTION 36



T5N R7E

## CORNER TYPE

Government Corner ☒ Control ☐  
 Meander ☐ Property ☐  
 Rancho ☐ Other ☐  
 Date of Survey February 23, 2009

## COORDINATES (Optional)

N. \_\_\_\_\_  
 E. \_\_\_\_\_  
 Zone \_\_\_\_\_ NAD27 ☐ NAD83 ☐  
 NAD83 Epoch \_\_\_\_\_  
 Elev. \_\_\_\_\_  
 Vert. Datum: NGVD29 ☐ NAVD88 ☐  
 Meas. Units: Metric ☐ Imperial ☒

Corner - Left as found ☒ Found and tagged ☐ Established ☐ Reestablished ☐ Rebuilt ☐

Identification and type of corner found: Evidence used to identify or procedure used to establish or reestablish the corner:  
SEE SKETCH ON BACKSIDE.

A description of the physical condition of the monument as found and as set or reset: \_\_\_\_\_  
SEE SKETCH ON BACKSIDE.

## SURVEYOR'S STATEMENT

This Corner Record was prepared by me or under my direction in conformance with  
 the Land Surveyors' Act on May 11, 2009.

Signed *Kevin L. Jorgensen* P.L.S. Number 8470

## COUNTY SURVEYOR'S STATEMENT

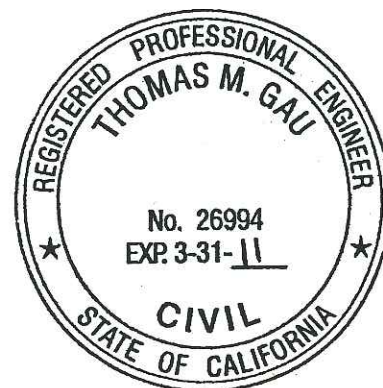
This Corner Record was received MAY 11, 2009 and examined  
 and filed MAY 19, 2009.

Signed *Thomas M. Gau* R.C.E. No. 23341

*For* Title County Surveyor

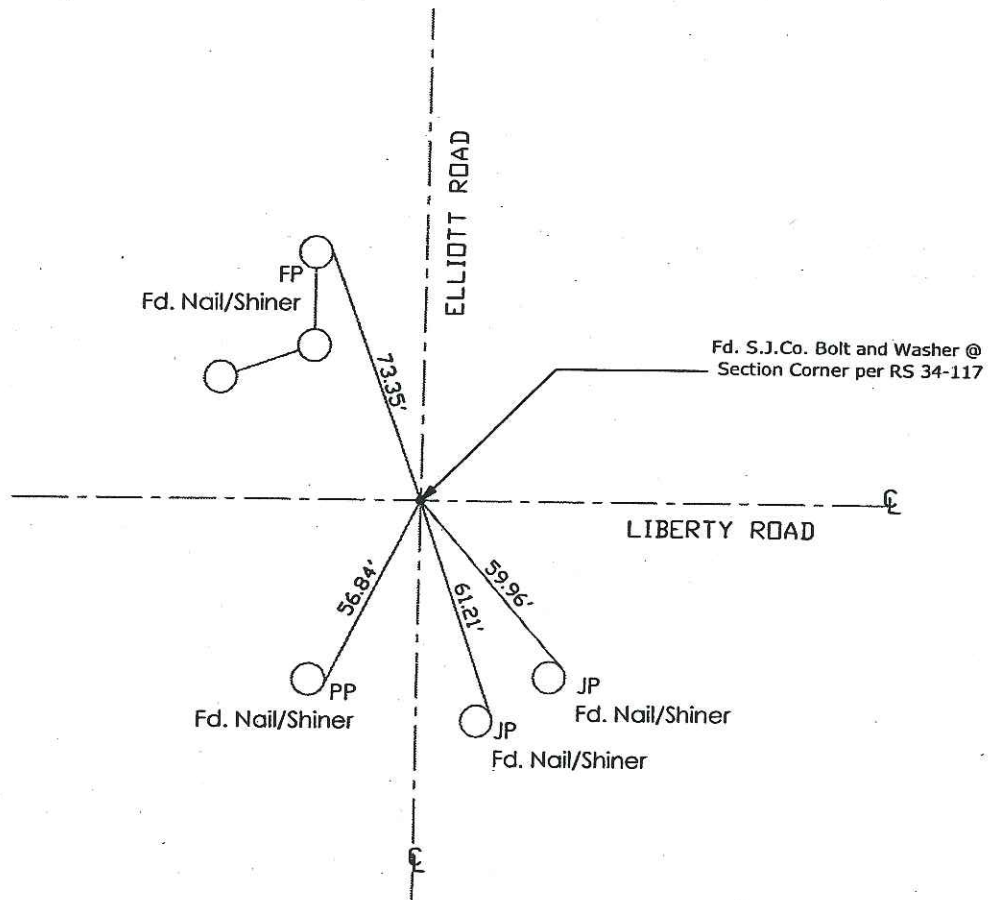
County Surveyor's Comment \_\_\_\_\_

(D.D. Sheet Nos. 3 & 10 )  
 (Job No. 220728)





N.T.S.



Note: Found Monuments are not tagged unless otherwise noted.

"No Attempt Was Made to Verify the Monument(s)"

FP=Fence Post  
 GP=Guy Post  
 JP=Joint Pole  
 LP=Lamp Pole  
 PP=Power Pole  
 RS=Record of Survey  
 SP=Service Pole  
 TP=Telephone Pole  
 SDI=Storm Drain Inlet  
 S.F.N=Searched Found Nothing  
 N.T.S.=Not To Scale  
 Set=Conc. Nail with Brass Washer Stamped  
 "S.J. Co.", unless otherwise noted