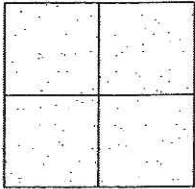


# CORNER RECORD

Document Number CR-09-40  
County of San Joaquin, California

City of \_\_\_\_\_

Brief Legal Description ALPINE AVENUE @ KIRK AVENUE



## CORNER TYPE

Government Corner ☐ Control ☐  
Meander ☐ Property ☐  
Rancho ☐ Other ☒

Date of Survey February 3, 2009

## COORDINATES (Optional)

N. \_\_\_\_\_  
E. \_\_\_\_\_  
Zone \_\_\_\_\_ NAD27 ☐ NAD83 ☐  
NAD83 Epoch \_\_\_\_\_  
Elev. \_\_\_\_\_  
Vert. Datum: NGVD29 ☐ NAVD88 ☐  
Meas. Units: Metric ☐ Imperial ☒

Corner - Left as found ☒ Found and tagged ☐ Established ☐ Reestablished ☐ Rebuilt ☐

Identification and type of corner found: Evidence used to identify or procedure used to establish or reestablish the corner:  
SEE SKETCH ON BACKSIDE.

A description of the physical condition of the monument as found and as set or reset:  
SEE SKETCH ON BACKSIDE.

## SURVEYOR'S STATEMENT

This Corner Record was prepared by me or under my direction in conformance with the Land Surveyors' Act on February 27, 2009.

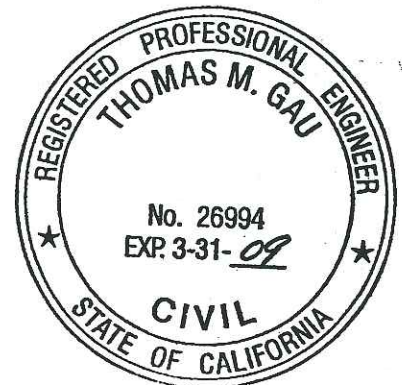
Signed Kevin L. Jorgensen II L.S. Number 8470

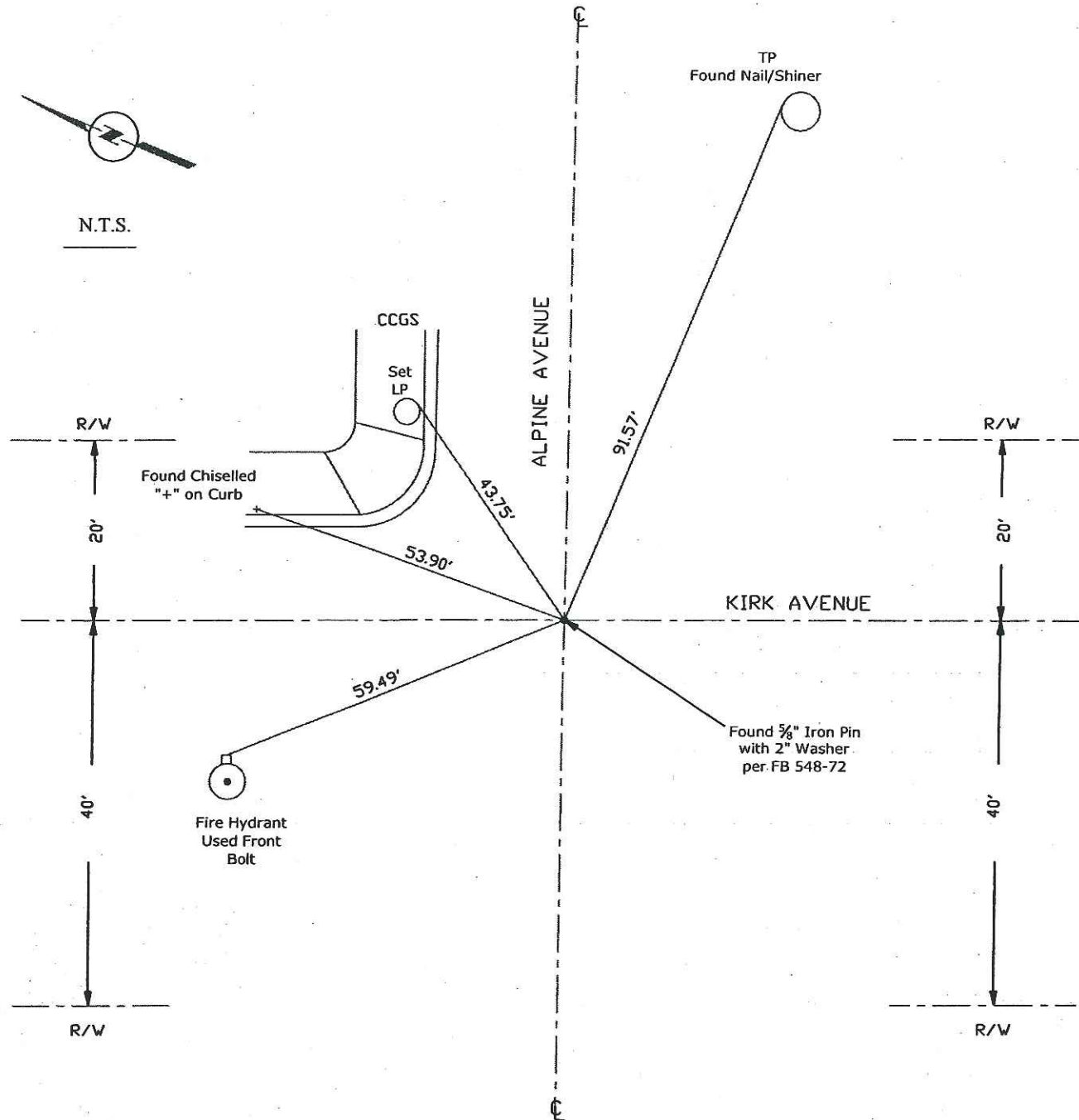
## COUNTY SURVEYOR'S STATEMENT

This Corner Record was received MARCH 2, 2009 and examined and filed MARCH 12, 2009.

by Signed Thomas M. Gau R.C.E. No. 23341  
Title County Surveyor

County Surveyor's Comment \_\_\_\_\_





Note: Found Monuments are not tagged unless otherwise noted.

"No Attempt Was Made to Verify the Monument(s)"

**LP = Light Pole**

FP = Fence Post

GP = Guy Post

JP = Joint Pole

PP = Power Pole

SP = Service Pole

TP = Telephone Pole

CCGS = Concrete Curb Gutter Sidewalk

S.F.N = Searched Found Nothing

N.T.S. = Not To Scale

Set = Conc. Nail with Brass Washer Stamped

"S.J. Co.", unless otherwise noted

Note: Set Ties are Brass Washers Stamped "S.J. Co. PUBLIC WORKS"