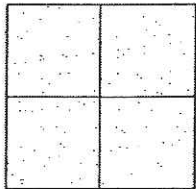


CORNER RECORD

Document Number CR-09-34
 City of _____ County of San Joaquin, California

Brief Legal Description FRENCH CAMP ROAD 4695' SOUTHEAST OF MURPHY ROAD

(WITHIN SECTION 33, TOWNSHIP 1 SOUTH, RANGE 8 EAST)



CORNER TYPE

Government Corner ☐ Control ☐
 Meander ☐ Property ☐
 Rancho ☐ Other ☒

Date of Survey January 20, 2009

COORDINATES (Optional)

N. _____
 E. _____
 Zone _____ NAD27 ☐ NAD83 ☐
 NAD83 Epoch _____
 Elev. _____
 Vert. Datum: NGVD29 ☐ NAVD88 ☐
 Meas. Units: Metric ☐ Imperial ☒

Corner - Left as found ☒ Found and tagged ☐ Established ☐ Reestablished ☐ Rebuilt ☐

Identification and type of corner found: Evidence used to identify or procedure used to establish or reestablish the corner:
SEE SKETCH ON BACKSIDE.

A description of the physical condition of the monument as found and as set or reset:
SEE SKETCH ON BACKSIDE.

SURVEYOR'S STATEMENT

This Corner Record was prepared by me or under my direction in conformance with
 the Land Surveyors' Act on February 17th, 2009.

Signed Kevin L. Jorgensen P.L.S. Number 8470

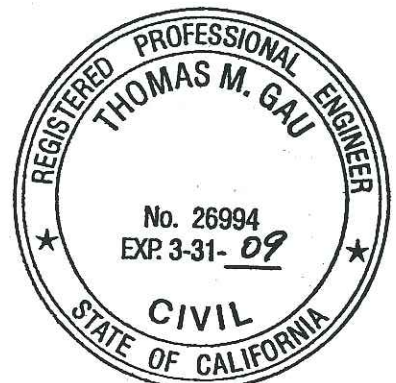
COUNTY SURVEYOR'S STATEMENT

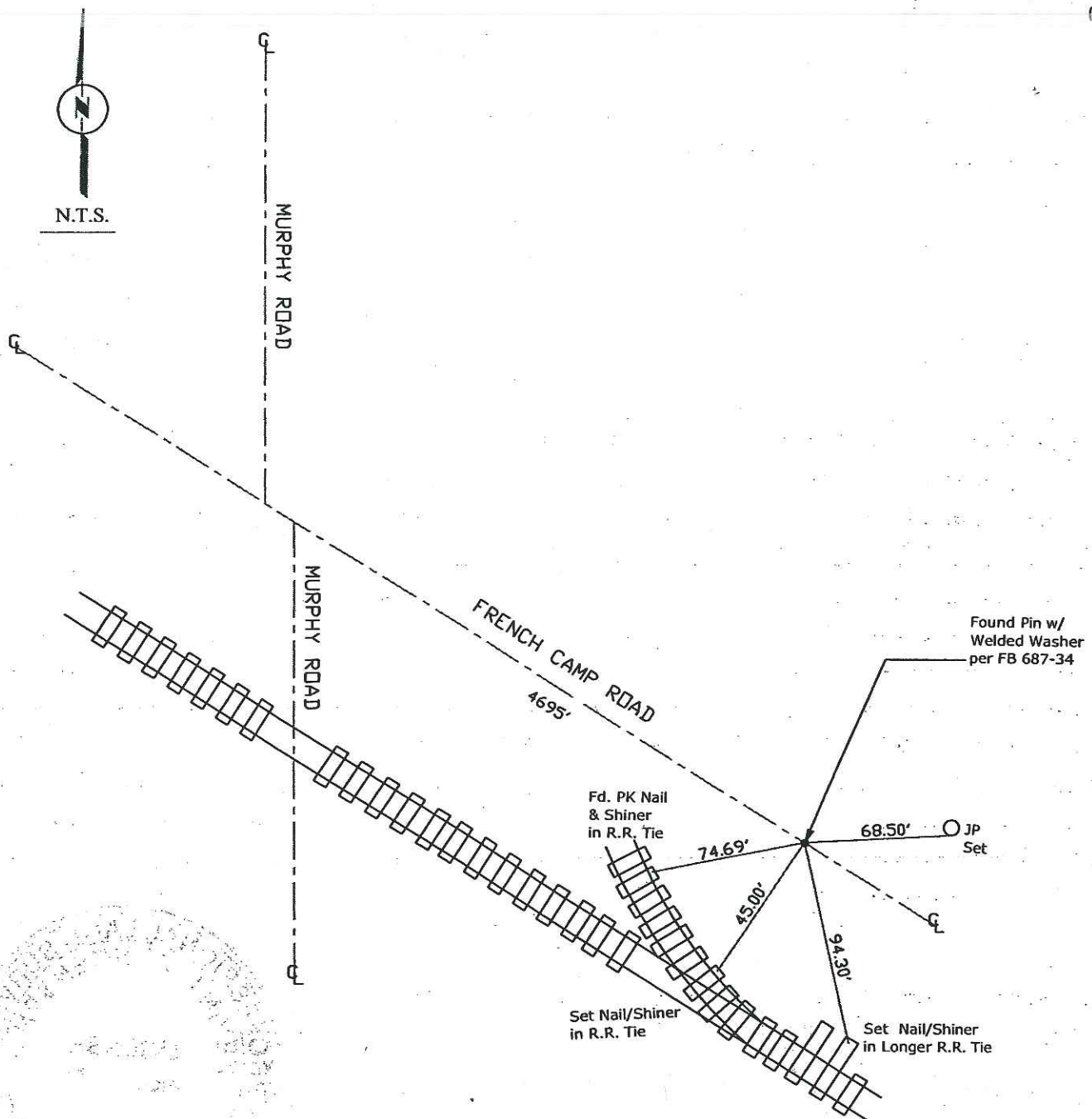
This Corner Record was received FEBRUARY 19, 2009 and examined
 and filed MARCH 10, 2009.

Signed Thomas M. Gau R.C.E. No. 23341

Title County Surveyor

County Surveyor's Comment _____





Note: Found Monuments are not tagged
nor of Record, unless otherwise noted.

"No Attempt Was Made to Verify the Monument(s)"

NTS= Not to Scale

FP=Fence Post

GP=Guy Post

JP=Joint Pole

PP=Power Pole

SP=Service Pole

TP=Telephone Pole

S.F.N=Searched Found Nothing

N.T.S.=Not To Scale

Set=Conc. Nail with Brass Washer Stamped

"S. J. Co.", unless otherwise noted