

# CORNER RECORD

Document Number C12-09-28  
County of San Joaquin, California

City of \_\_\_\_\_

Brief Legal Description WEST RIPON ROAD

SOUTH QUARTER CORNER OF SECTION 22

## CORNER TYPE

## COORDINATES (Optional)



T2S R7E

Government Corner ☒ Control ☐  
Meander ☐ Property ☐  
Rancho ☐ Other ☐

Date of Survey January 7, 2009

N. \_\_\_\_\_  
E. \_\_\_\_\_  
Zone \_\_\_\_\_ NAD27 ☐ NAD83 ☐  
NAD83 Epoch \_\_\_\_\_  
Elev. \_\_\_\_\_  
Vert. Datum: NGVD29 ☐ NAVD88 ☐  
Meas. Units: Metric ☐ Imperial ☒

Corner - Left as found ☒ Found and tagged ☐ Established ☐ Reestablished ☐ Rebuilt ☐

Identification and type of corner found: Evidence used to identify or procedure used to establish or reestablish the corner:  
SEE SKETCH ON BACKSIDE.

A description of the physical condition of the monument as found and as set or reset:  
SEE SKETCH ON BACKSIDE.

## SURVEYOR'S STATEMENT

This Corner Record was prepared by me or under my direction in conformance with  
the Land Surveyors' Act on February 17<sup>th</sup>, 2009.

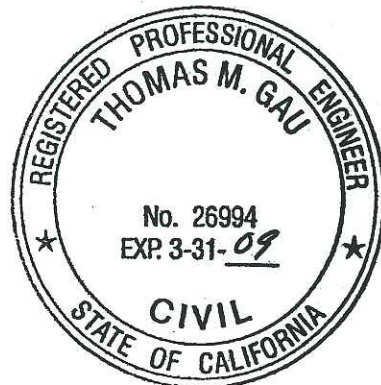
Signed *Kevin L. Jorgensen* P.L.S. Number 8470

## COUNTY SURVEYOR'S STATEMENT

This Corner Record was received February 19, 2009 and examined  
and filed MARCH 11, 2009.

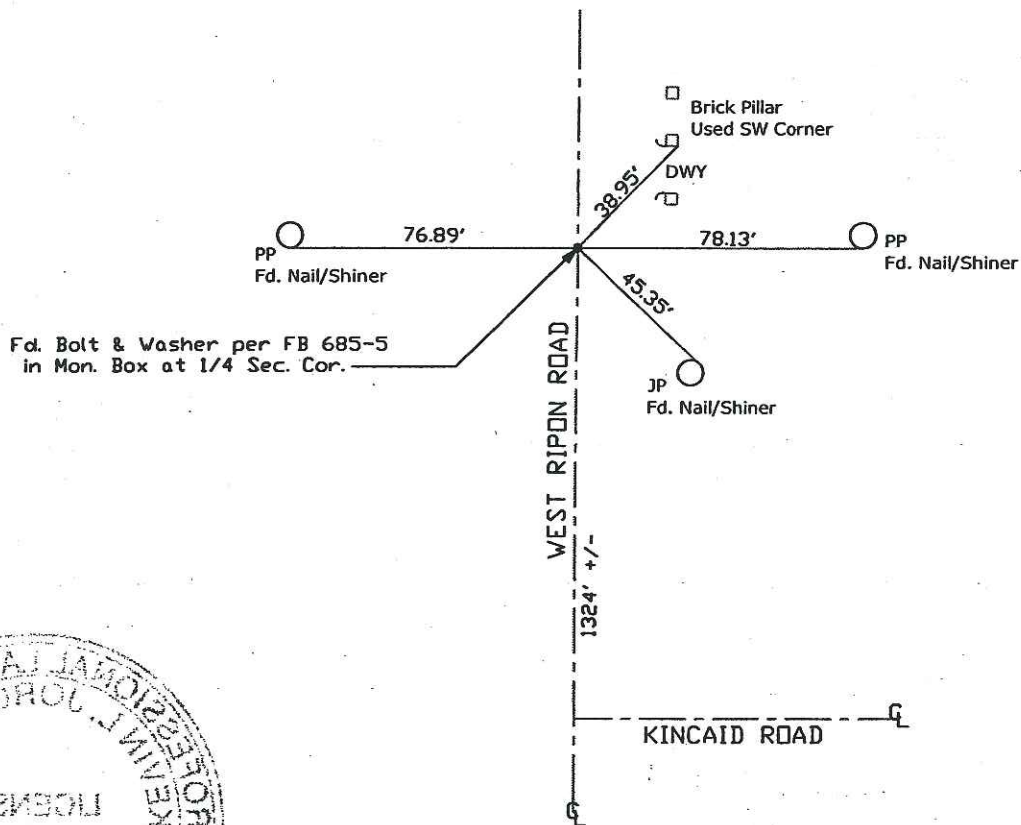
by Signed *Thomas M. Gau* R.C.E. No. 23341  
Title County Surveyor

County Surveyor's Comment \_\_\_\_\_





N.T.S.



Note: Found Monuments are not tagged nor of Record, unless otherwise noted.

"No Attempt Was Made to Verify the Monument(s)"

DWY=Driveway

N.T.S.=Not to Scale

FP=Fence Post

CP=Guy Post

JP=Joint Pole

PP=Power Pole

SP=Service Pole

TP=Telephone Pole

S.F.N=Searched Found Nothing

N.T.S.=Not To Scale

Set=Cap. Nail with Brass Washer Stamped

"S.J. Co." unless otherwise noted