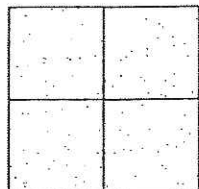


# CORNER RECORD

Document Number CR-09-19  
 County of San Joaquin, California

City of \_\_\_\_\_

Brief Legal Description SUTLIFF AVENUE @ LEMON AVENUE



## CORNER TYPE

Government Corner ☐ Control ☐  
 Meander ☐ Property ☐  
 Rancho ☐ Other ☒

Date of Survey December 30, 2008

## COORDINATES (Optional)

N. \_\_\_\_\_  
 E. \_\_\_\_\_  
 Zone \_\_\_\_\_ NAD27 ☐ NAD83 ☐  
 NAD83 Epoch \_\_\_\_\_  
 Elev. \_\_\_\_\_  
 Vert. Datum: NGVD29 ☐ NAVD88 ☐  
 Meas. Units: Metric ☐ Imperial ☒

Corner - Left as found ☒ Found and tagged ☐ Established ☐ Reestablished ☐ Rebuilt ☐

Identification and type of corner found: Evidence used to identify or procedure used to establish or reestablish the corner:  
SEE SKETCH ON BACKSIDE.

A description of the physical condition of the monument as found and as set or reset:  
SEE SKETCH ON BACKSIDE.

## SURVEYOR'S STATEMENT

This Corner Record was prepared by me or under my direction in conformance with  
 the Land Surveyors' Act on February 17<sup>th</sup>, 2009.

Signed Kevin L. Jorgensen P.L.S. Number 8470

## COUNTY SURVEYOR'S STATEMENT

This Corner Record was received February 19, 2009 and examined  
 and filed MARCH 11, 2009.

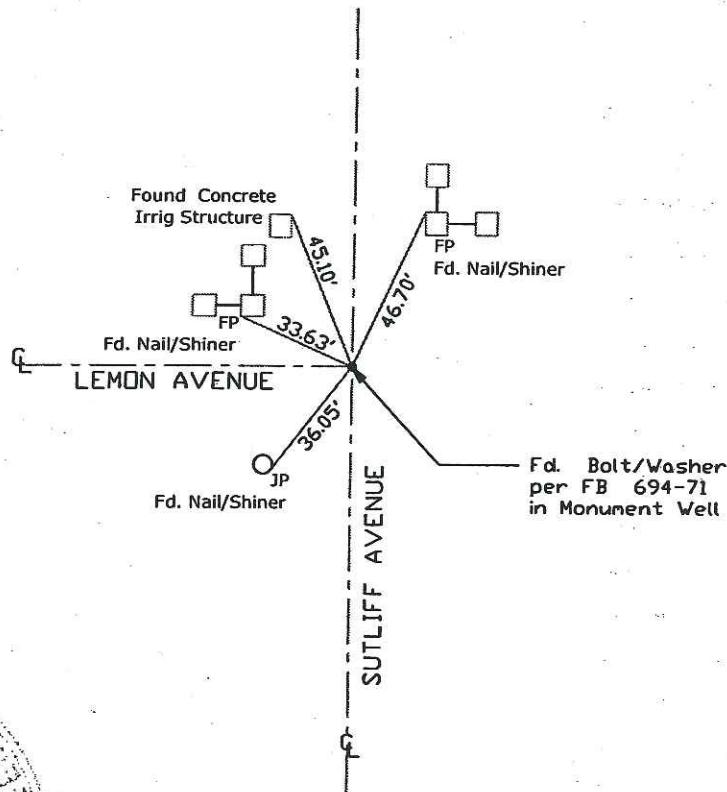
by Signed Thomas M. Gau R.C.E. No. 23341  
 Title County Surveyor

County Surveyor's Comment \_\_\_\_\_





N.T.S.



Note: Found Monuments are not tagged nor of Record, Unless otherwise noted.

"No Attempt Was Made to Verify the Monument(s)"

NTS= Not to Scale

FP=Fence Post

GP=Guy Post

JP=Joint Pole

PP=Power Pole

SP=Service Pole

TP=Telephone Pole

S.F.N=Searched Found Nothing

N.T.S.=Not To Scale

Set=Conc. Nail with Brass Washer Stamped

"S.V. Co." unless otherwise noted