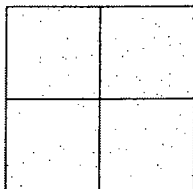


CORNER RECORD

Document Number CRZ-09-16
 County of San Joaquin, California

City of _____

Brief Legal Description INDIANA STREET @ ORANGE STREET IN TOWN OF WOODBRIDGE
(WITHIN SECTION 34, TOWNSHIP 4 NORTH, RANGE 6 EAST)



CORNER TYPE

Government Corner ☐ Control ☐
 Meander ☐ Property ☐
 Rancho ☐ Other ☒

Date of Survey November 17, 2008

COORDINATES (Optional)

N. _____
 E. _____
 Zone _____ NAD27 ☐ NAD83 ☐
 NAD83 Epoch _____
 Elev. _____
 Vert. Datum: NGVD29 ☐ NAVD88 ☐
 Meas. Units: Metric ☐ Imperial ☒

Corner - Left as found ☒ Found and tagged ☐ Established ☐ Reestablished ☐ Rebuilt ☐

Identification and type of corner found: Evidence used to identify or procedure used to establish or reestablish the corner:
SEE SKETCH ON BACKSIDE.

A description of the physical condition of the monument as found and as set or reset:
SEE SKETCH ON BACKSIDE.

SURVEYOR'S STATEMENT

This Corner Record was prepared by me or under my direction in conformance with the Land Surveyors' Act on January 22nd, 2009.

Signed [Signature] P.L.S. Number 8470

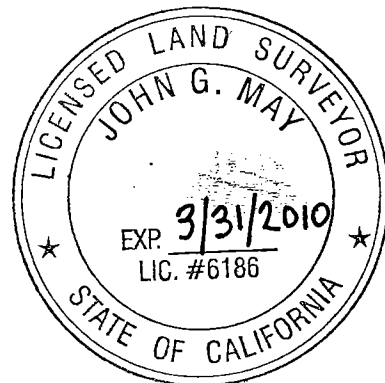
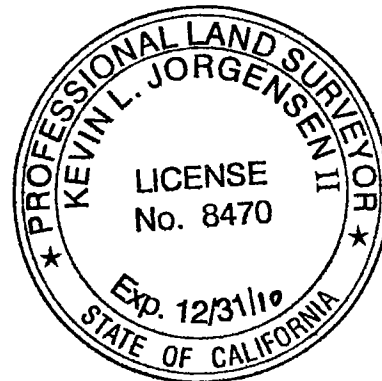
COUNTY SURVEYOR'S STATEMENT

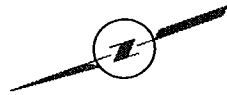
This Corner Record was received JAN. 22ND, 2009 and examined and filed FEBRUARY 3RD, 2009.

Signed [Signature] P.L.S. No. 6186

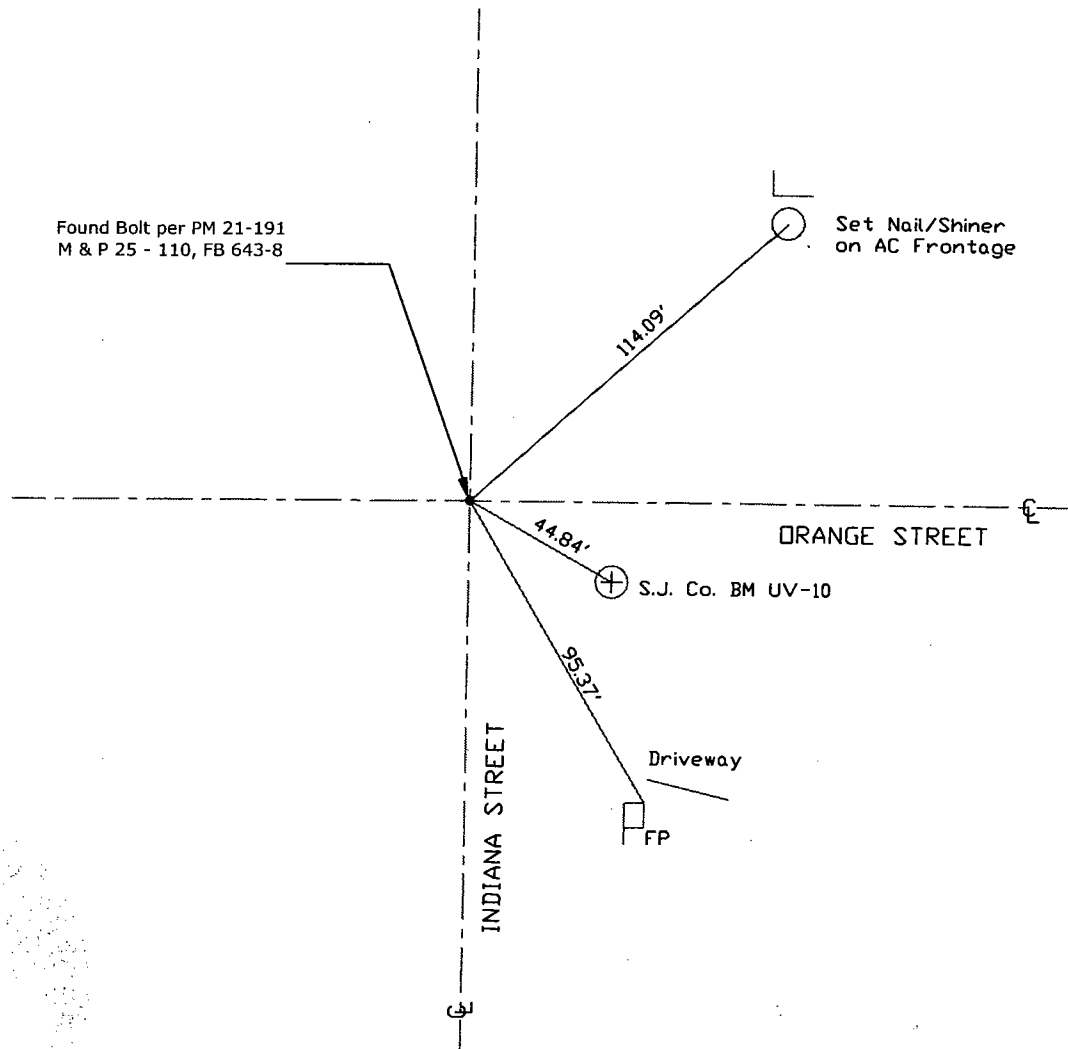
Title Deputy County Surveyor

County Surveyor's Comment _____





N.T.S.



Note: Found Monuments are not tagged
unless otherwise noted.

"No Attempt Was Made to Verify the Monument(s)"

AC=Asphalt Concrete

BM=Benchmark

FP=Fence Post

GP=Guy Post

JP=Joint Pole

LP=Lamp Pole

PP=Power Pole

RS=Record of Survey

SP=Service Pole

TP=Telephone Pole

S.F.N=Searched Found Nothing

N.T.S.=Not To Scale

Set=Conc. Nail with Brass Washer Stamped

"S.J. Co.", unless otherwise noted