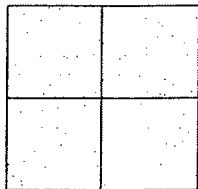


CORNER RECORD

Document Number CR-09-15
City of _____ County of San Joaquin, California

Brief Legal Description INDIANA STREET @ OLIVE STREET IN TOWN OF WOODBRIDGE
(WITHIN SECTION 34, TOWNSHIP 4 NORTH, RANGE 6 EAST)



CORNER TYPE

Government Corner ☐ Control ☐
Meander ☐ Property ☐
Rancho ☐ Other ☒

Date of Survey November 17, 2008

COORDINATES (Optional)

N. _____
E. _____
Zone _____ NAD27 ☐ NAD83 ☐
NAD83 Epoch _____
Elev. _____
Vert. Datum: NGVD29 ☐ NAVD88 ☐
Meas. Units: Metric ☐ Imperial ☒

Corner - Left as found ☒ Found and tagged ☐ Established ☐ Reestablished ☐ Rebuilt ☐

Identification and type of corner found: Evidence used to identify or procedure used to establish or reestablish the corner:
SEE SKETCH ON BACKSIDE.

A description of the physical condition of the monument as found and as set or reset: _____
SEE SKETCH ON BACKSIDE.

SURVEYOR'S STATEMENT

This Corner Record was prepared by me or under my direction in conformance with
the Land Surveyors' Act on January 22nd, 2009.

Signed [Signature] P.L.S. Number 8470

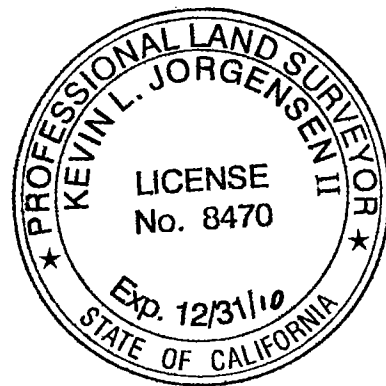
COUNTY SURVEYOR'S STATEMENT

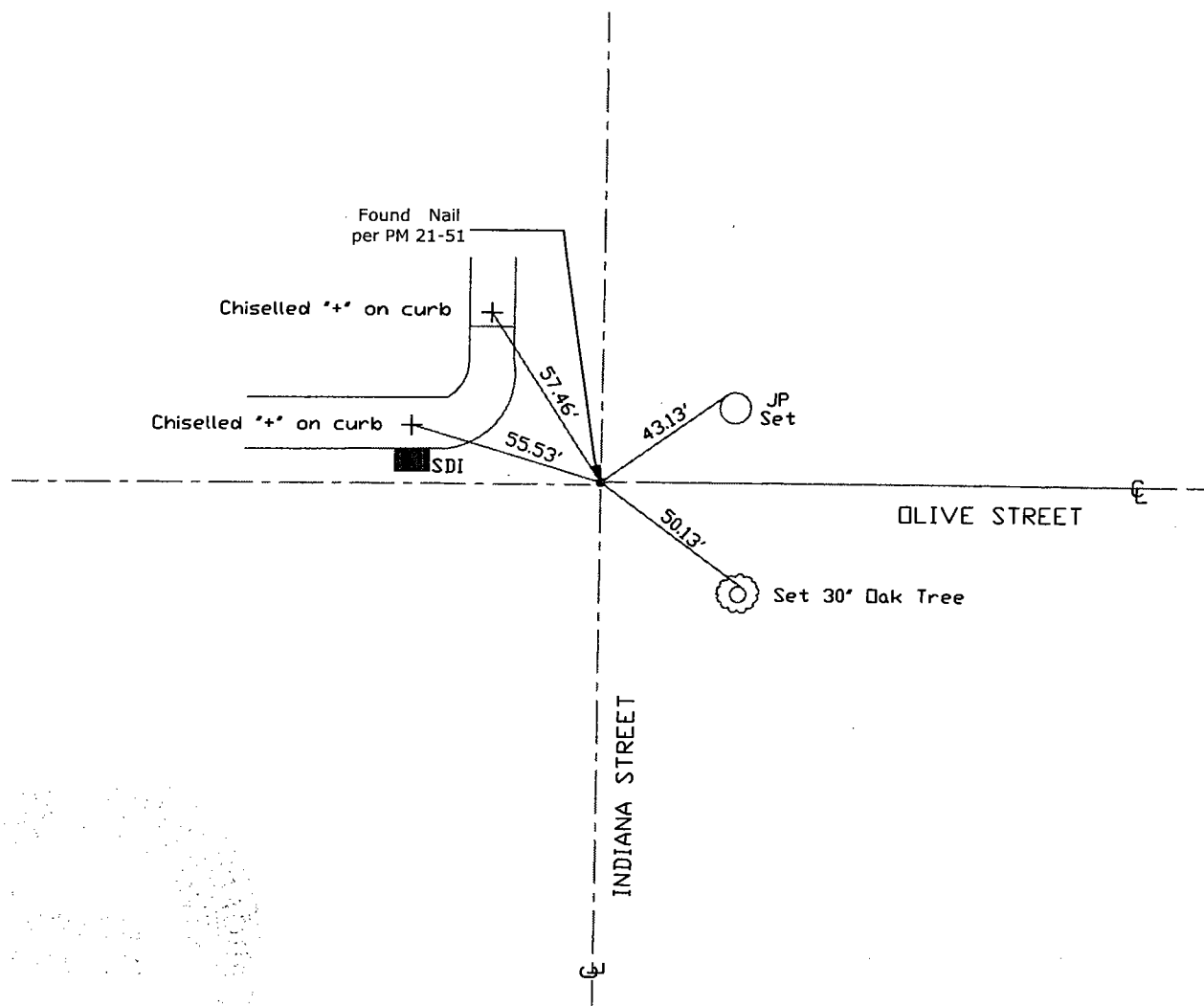
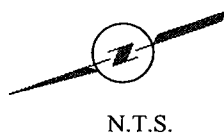
This Corner Record was received JAN. 22ND, 2009 and examined
and filed FEBRUARY 3RD, 2009.

Signed John G. May P.L.S. No. 6186

Title Deputy County Surveyor

County Surveyor's Comment _____





Note: Found Monuments are not tagged unless otherwise noted.

"No Attempt Was Made to Verify the Monument(s)"

FP=Fence Post

GP=Guy Post

JP=Joint Pole

LP=Lamp Pole

PP=Power Pole

RS=Record of Survey

SP=Service Pole

TP=Telephone Pole

SDI=Storm Drain Inlet

S.F.N=Searched Found Nothing

N.T.S.=Not To Scale

Set=Conc. Nail with Brass Washer Stamped

"S.J. Co.", unless otherwise noted