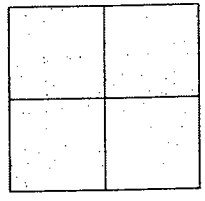


CORNER RECORD

Document Number CR-09-08  
County of San Joaquin, California

City of \_\_\_\_\_

Brief Legal Description WALDEN DRIVE @ INDIANA STREET IN TOWN OF WOODBRIDGE  
(WITHIN SECTION 34, TOWNSHIP 4 NORTH, RANGE 6 EAST)



CORNER TYPE

Government Corner ☐ Control ☐  
Meander ☐ Property ☐  
Rancho ☐ Other ☒  
Date of Survey November 14, 2008

COORDINATES (Optional)

N. \_\_\_\_\_  
E. \_\_\_\_\_  
Zone \_\_\_\_\_ NAD27 ☐ NAD83 ☐  
NAD83 Epoch \_\_\_\_\_  
Elev. \_\_\_\_\_  
Vert. Datum: NGVD29 ☐ NAVD88 ☐  
Meas. Units: Metric ☐ Imperial ☒

Corner - Left as found ☒ Found and tagged ☐ Established ☐ Reestablished ☐ Rebuilt ☐

Identification and type of corner found: Evidence used to identify or procedure used to establish or reestablish the corner:  
SEE SKETCH ON BACKSIDE.

A description of the physical condition of the monument as found and as set or reset: \_\_\_\_\_  
SEE SKETCH ON BACKSIDE.

SURVEYOR'S STATEMENT

This Corner Record was prepared by me or under my direction in conformance with  
the Land Surveyors' Act on 12/19/08, 2008.

Signed [Signature] P.L.S. Number 8470

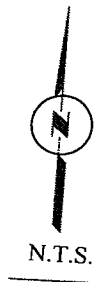
COUNTY SURVEYOR'S STATEMENT

This Corner Record was received 12/24/08, 2008 and examined  
and filed January 8, 2009.

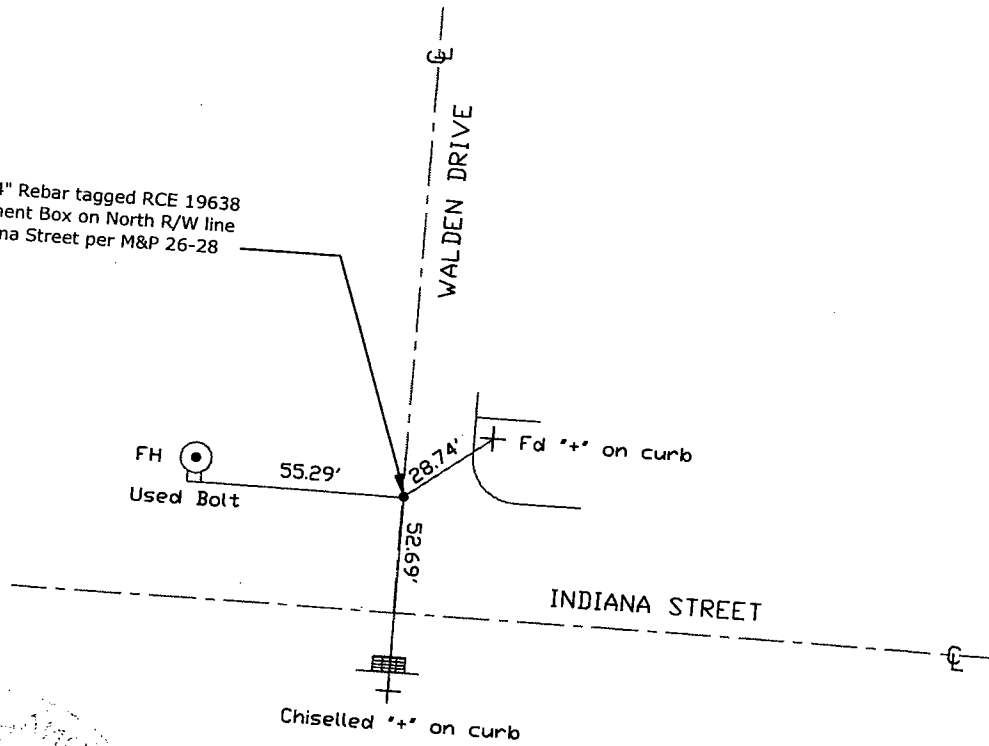
Signed John G. May P.L.S. No. 6186  
Title Deputy County Surveyor

County Surveyor's Comment \_\_\_\_\_  
\_\_\_\_\_  
\_\_\_\_\_





Found 3/4" Rebar tagged RCE 19638  
in Monument Box on North R/W line  
of Indiana Street per M&P 26-28



Note: Found Monuments are not tagged  
unless otherwise noted.

"No Attempt Was Made to Verify the Monument(s)"

FH=Fire Hydrant  
FP=Fence Post  
GP=Guy Post  
JP=Joint Pole  
LP=Lamp Pole  
PP=Power Pole  
RS=Record of Survey  
SP=Service Pole  
TP=Telephone Pole  
S.F.N=Searched Found Nothing  
N.T.S.=Not To Scale  
Set=Conc. Nail with Brass Washer Stamped  
"S.J. Co.", unless otherwise noted