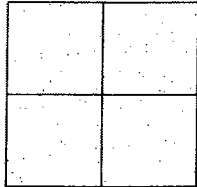


CORNER RECORD

Document Number CR-09-04
County of San Joaquin, California

City of _____

Brief Legal Description BENEDICT DRIVE 146.76' SOUTH OF WOODBRIDGE ROAD IN TOWN OF WOODBRIDGE
(WITHIN SECTION 34, TOWNSHIP 4 NORTH, RANGE 6 EAST)



CORNER TYPE

Government Corner ☐ Control ☐
Meander ☐ Property ☐
Rancho ☐ Other ☒

Date of Survey November 12, 2008

COORDINATES (Optional)

N. _____
E. _____
Zone _____ NAD27 ☐ NAD83 ☐
NAD83 Epoch _____
Elev. _____
Vert. Datum: NGVD29 ☐ NAVD88 ☐
Meas. Units: Metric ☐ Imperial ☒

Corner - Left as found ☒ Found and tagged ☐ Established ☐ Reestablished ☐ Rebuilt ☐

Identification and type of corner found: Evidence used to identify or procedure used to establish or reestablish the corner:
SEE SKETCH ON BACKSIDE.

A description of the physical condition of the monument as found and as set or reset: _____
SEE SKETCH ON BACKSIDE.

SURVEYOR'S STATEMENT

This Corner Record was prepared by me or under my direction in conformance with
the Land Surveyors' Act on 12/19/08, 2008.

Signed [Signature] P.L.S. Number 8470

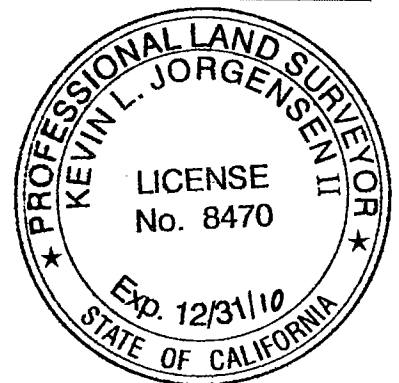
COUNTY SURVEYOR'S STATEMENT

This Corner Record was received 12/24/08, 2008 and examined
and filed January 8, 2009.

Signed John G. May P.L.S. No. 6186

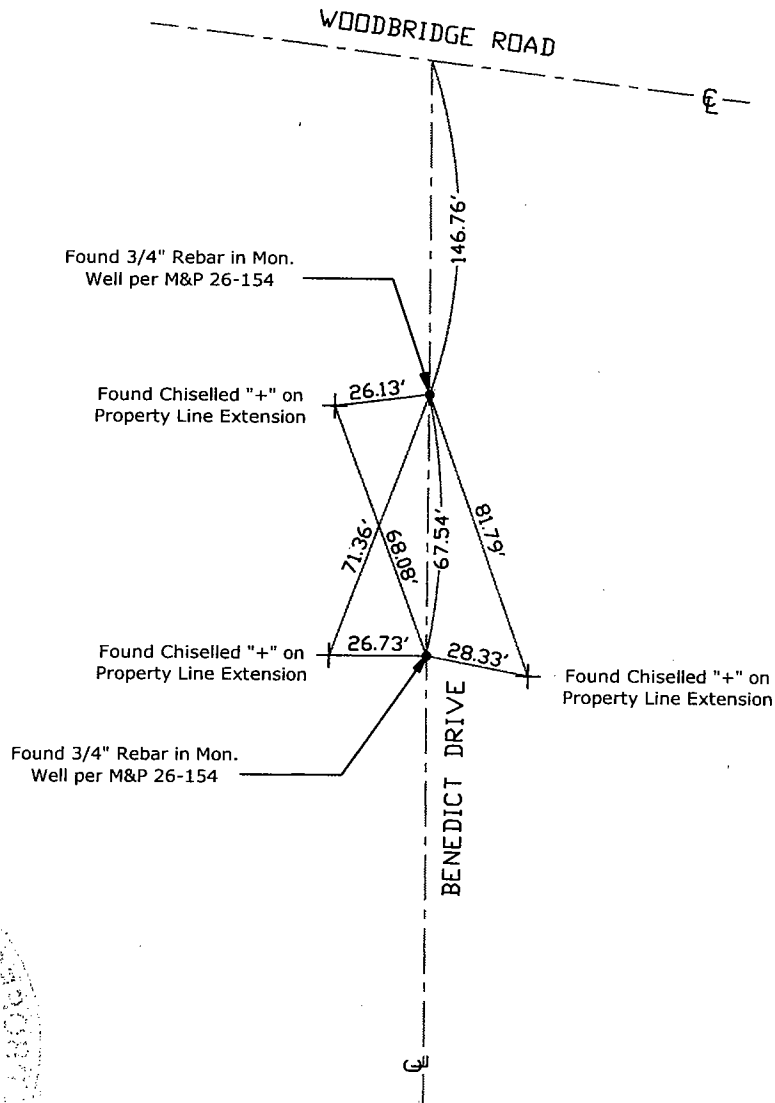
Title Deputy County Surveyor

County Surveyor's Comment _____





N.T.S.



Note: Found Monuments are not tagged unless otherwise noted.

"No Attempt Was Made to Verify the Monument(s)"

FP=Fence Post
 GP=Guy Post
 JP=Joint Pole
 LP=Lamp Pole
 PP=Power Pole
 RS=Record of Survey
 SP=Service Pole
 TP=Telephone Pole
 S.F.N=Searched Found Nothing
 N.T.S.=Not To Scale
 Set=Conc. Nail with Brass Washer Stamped
 "S.J. Co.", unless otherwise noted