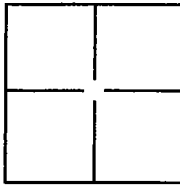


CORNER RECORD

Document Number CR-09-01
City of Stockton County of San Joaquin, California

Brief Legal Description Parcels One & Two, Document No. 2006-267217



CORNER TYPE

Government Corner ☐ Control ☐
Meander ☐ Property ☒
Rancho ☐ Other ☐

Date of Survey October 16, 2008

COORDINATES(Optional)

N. _____
E. _____
Zone _____ NAD27 ☐ NAD83 ☐
NAD83 Epoch _____
Elev. _____
Vert. Datum: NGVD29 ☐ NADV88 ☐
Meas. Units: Metric ☐ Imperial ☐

Corner - Left as found ☐ Found and tagged ☐ Established ☐ Reestablished ☒ Rebuilt ☐

Identification and type of corner found: Evidence used to identify or procedure used to establish or reestablish the corner.
Cut crosses in sidewalk on the easterly boundary of that 1.409 acre parcel per 14 R.S. 45

A description of the physical condition of the monument as found and as set or reset: Set 5/8" by 24" rebar with plastic cap stamped "LS 5532" and set nails with disk stamped "LS 5532" in concrete sidewalk or curb as shown on the accompanying exhibit

SURVEYOR'S STATEMENT

This Corner Record was prepared by me or under my direction in conformance with
the Land Surveyor's Act on December 19, 2008.

Signed [Signature] P.L.S. or R.C.E. No.: 5532



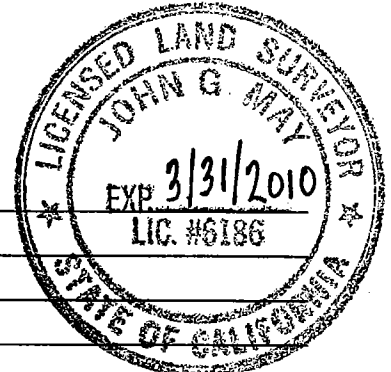
COUNTY SURVEYOR'S STATEMENT

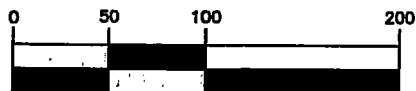
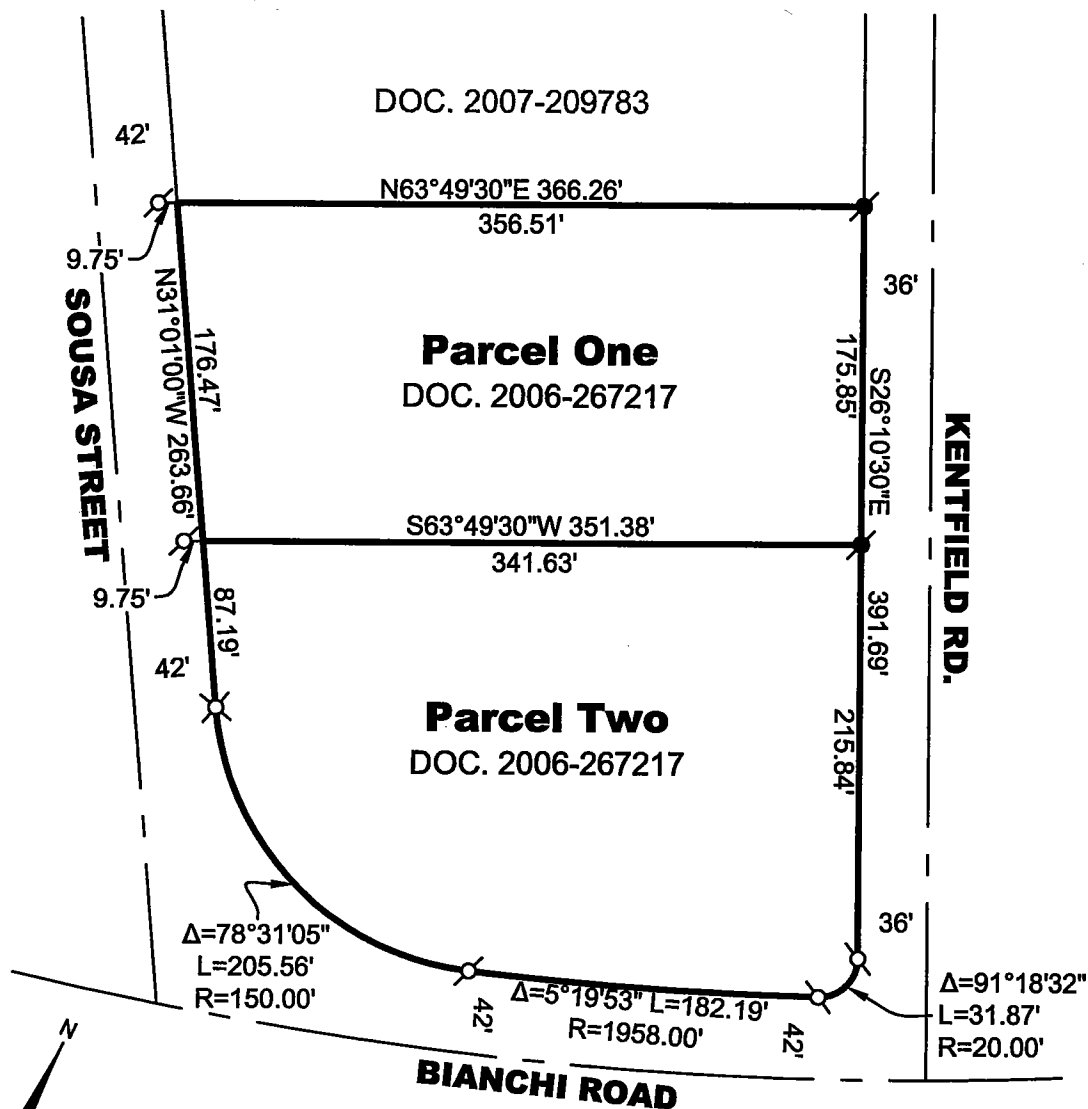
This Corner Record was received DEC 22, 2008 and examined
and filed JAN. 5, 2009.

Signed John G. May P.L.S. or R.C.E. No.: 6186

Title Deputy County Surveyor

County Surveyor's Comment _____





1 inch = 100 ft.

LEGEND	
	FOUND CHISELED "+" PER 14 R.S. 45, SET MAG NAIL WITH DISK L.S. 5532
	SET 5/8" BY 24" REBAR CAPPED L.S. 5532
	SET MAG NAIL WITH DISK L.S. 5532

SURVEYOR'S NOTES

1. EXCEPT AS SHOWN HEREON, ALL MONUMENTS PER 14 R.S. 45 WERE SEARCHED FOR AND NOT FOUND.
2. ALL MONUMENTS SET SEEM TO FIT THE IMPROVEMENTS.

Project Path: K:\Projects\San Joaquin\Kentfield Rd 4545, Stockton\
Drawing Name: CornerRecord.dwg

Page 2 of 2

Parcels One & Two
Document No. 2006-267217
City of Stockton
County of San Joaquin,
State of California

**WECKER
SURVEYS**

1111 KENNEDY PLACE
SUITE 4
DAVIS, CA 95616
530-792-7252
FAX 530-792-7171