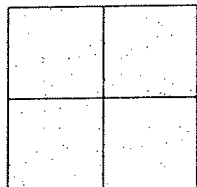


CORNER RECORD

Document Number CR-08-204
County of San Joaquin, California

City of _____

Brief Legal Description F STREET @ SIXTH AND SEVENTH STREETS IN TOWN OF BANTA
(WITHIN SECTION 24, TOWNSHIP 2 SOUTH, RANGE 5 EAST)



CORNER TYPE

Government Corner ☐ Control ☐
Meander ☐ Property ☐
Rancho ☐ Other ☒

Date of Survey October 29, 2008

COORDINATES (Optional)

N. _____
E. _____
Zone _____ NAD27 ☐ NAD83 ☐
NAD83 Epoch _____
Elev. _____
Vert. Datum: NGVD29 ☐ NAVD88 ☐
Meas. Units: Metric ☐ Imperial ☒

Corner - Left as found ☐ Found and tagged ☐ Established ☐ Reestablished ☐ Rebuilt ☒

Identification and type of corner found: Evidence used to identify or procedure used to establish or reestablish the corner:
SEE SKETCH ON BACKSIDE.

A description of the physical condition of the monument as found and as set or reset:
SEE SKETCH ON BACKSIDE.

SURVEYOR'S STATEMENT

This Corner Record was prepared by me or under my direction in conformance with
the Land Surveyors' Act on 11/10/08, 2008.

Signed [Signature] P.L.S. Number 8470

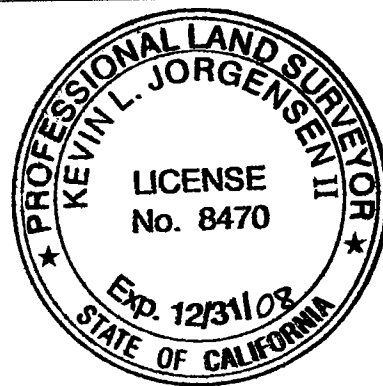
COUNTY SURVEYOR'S STATEMENT

This Corner Record was received 11/12/08, 2008 and examined
and filed NOVEMBER 14, 2008.

Signed John G. May P.L.S. No. 6186

Title Deputy County Surveyor

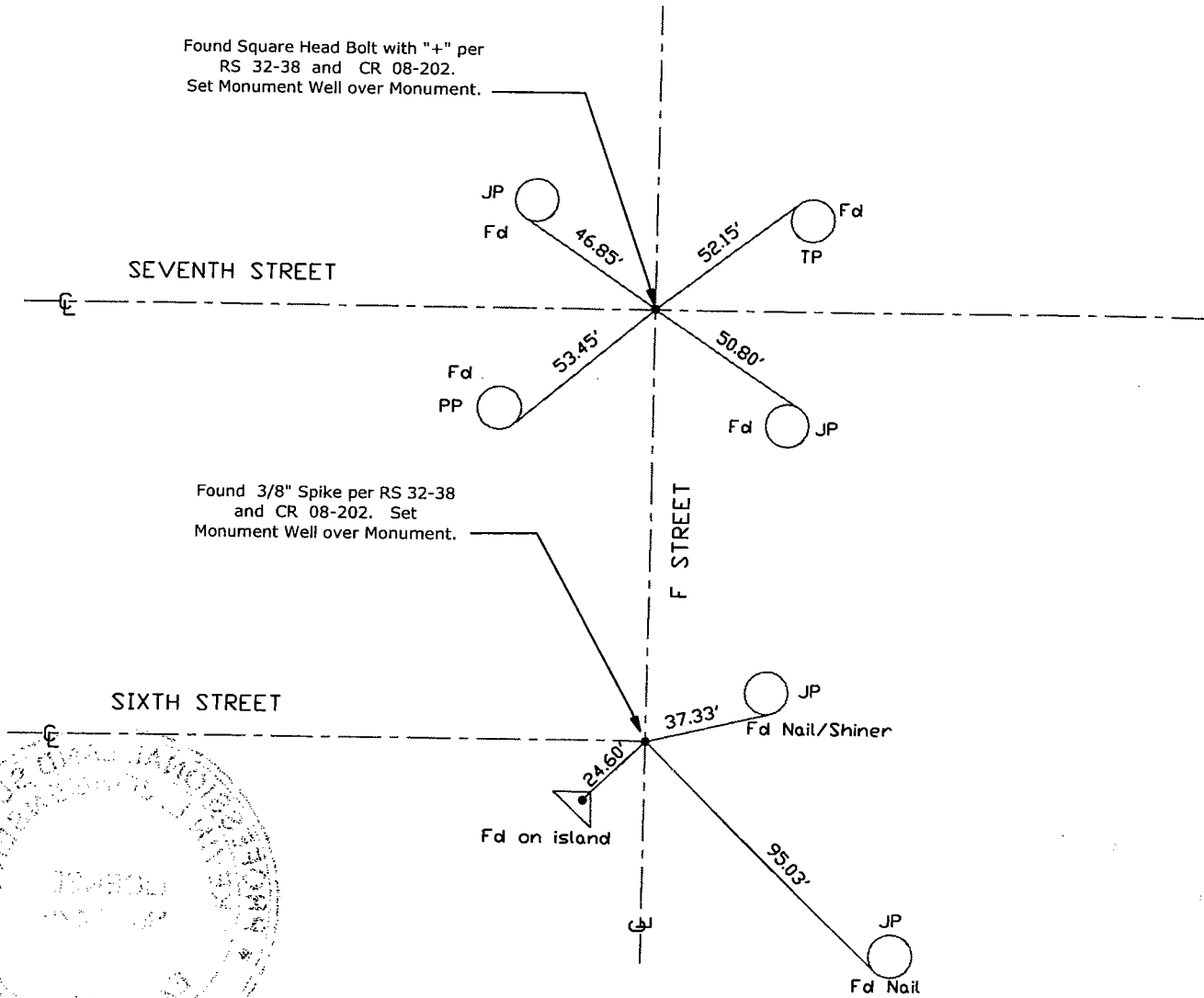
County Surveyor's Comment _____





N.T.S.

Found Square Head Bolt with "+" per
RS 32-38 and CR 08-202.
Set Monument Well over Monument.



Note: Found Monuments are not tagged
unless otherwise noted.

"No Attempt Was Made to Verify the Monument(s)"

FP=Fence Post
GP=Guy Post
JP=Joint Pole
LP=Lamp Pole
PP=Power Pole
RS=Record of Survey
SP=Service Pole
TP=Telephone Pole
S.F.N=Searched Found Nothing
N.T.S.=Not To Scale
Fd=Conc. Nail with Brass Washer Stamped
"S.J. Co.", unless otherwise noted