

# CORNER RECORD

DOCUMENT NO. C 08-203CITY OF MANTECA, COUNTY OF SAN JOAQUIN, CALIFORNIABrief Legal Description: THE SOUTHEAST CORNER OF SECTION 9, TOWNSHIP 2 SOUTH, RANGE 7 EAST, MOUNT DIABLO BASE AND MERIDIAN.

## CORNER TYPE

Government Corner ☒ Control ☐  
Meander ☐ Property ☐  
Rancho ☐ Other ☐  
Date of Survey: 16 October 2008

## COORDINATES (Optional)

N. \_\_\_\_\_  
E. \_\_\_\_\_  
Zone        NAD27 ☐ NAD83 ☐  
NAD83 Epoch \_\_\_\_\_  
Elev. \_\_\_\_\_  
Vert. Datum: NAVD29 ☐ NAVD88 ☐  
Meas. Units: Metric ☐ Imperial ☒

Corner: Left as Found ☐ Found and Tagged ☐ Established ☐ Reestablished ☒ Rebuilt ☐

Identification and type of corner found: Evidence used to identify or procedure used to establish or reestablish the corner:  
Re-established corner position using existing monumentation and record mapping.

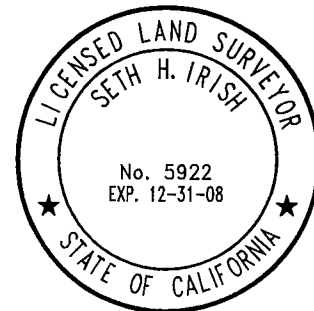
See legend on Page 2 of 2

A description of the physical condition of the monument found and as set or reset.

Set 3/4" x 30" long iron pipe with plastic cap tagged L.S. 5922 in monument well to replace monument destroyed during construction.

## SURVEYOR'S STATEMENT

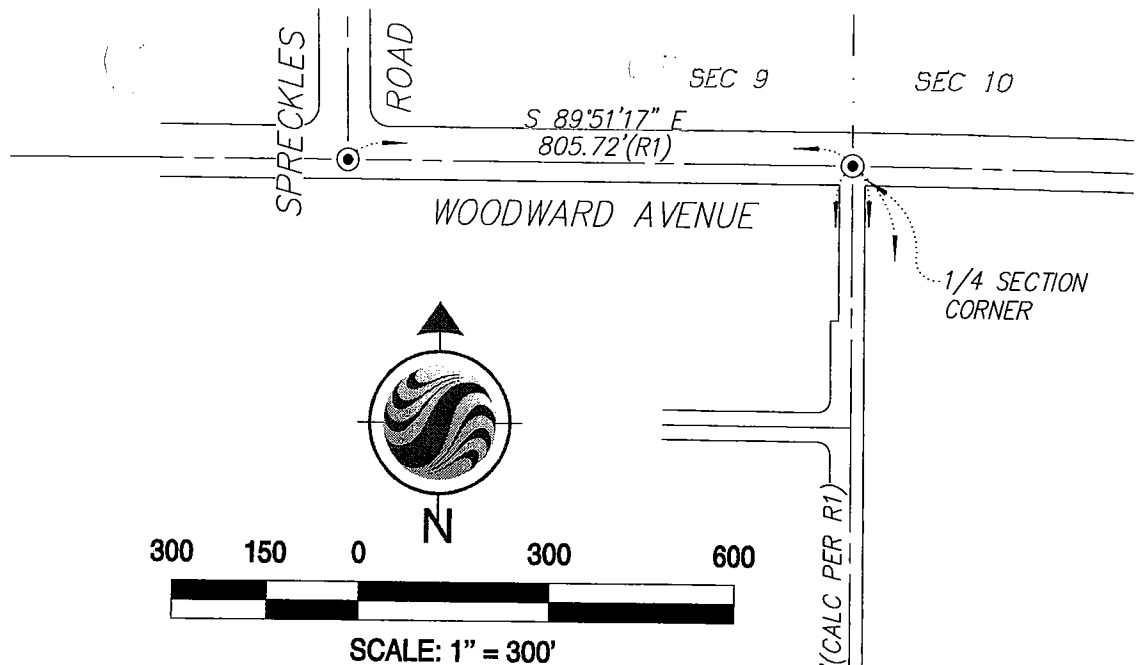
This corner record was prepared by me or under my direction in conformance with  
the Land Surveyor's Act on 30 OCTOBER 12, 2008.  
Signed [Signature] L.S. or R.C.E. Number 5922



## COUNTY SURVEYOR'S STATEMENT

This Corner Record was received NOVEMBER 3, 2008 and examined  
and filed NOVEMBER 7TH, 2008.  
Signed John G. May L.S. or R.C.E. Number 6186  
Title Deputy County Surveyor  
County Surveyor's Comment(s): \_\_\_\_\_





### LEGEND:

- FOUND 3/4" IRON PIPE TAGGED L.S. 6953  
IN MONUMENT WELL (R1) OR  
AS NOTED.
- ⊙— SET 3/4" IRON PIPE TAGGED L.S. 5922  
IN MONUMENT WELL OR  
AS NOTED.
- M & P MAPS & PLATS
- S.J.C.R. SAN JOAQUIN COUNTY RECORDS
- D.N. DOCUMENT NUMBER

### REFERENCE:

- (R1) "JASMINE HOLLOW, UNIT NO. 2",  
39-M&P-19, S.J.C.R.

JASMINE HOLLOW,  
UNIT NO. 2  
39-M&P-19

T. 2 S., R. 7 E.,  
M.D.B. & M.

FOUND 3/4" IRON PIPE  
TAGGED PLS 6437 PER  
"JASMINE HOLLOW, UNIT NO. 1,  
38-M&P-21, S.J.C.R.