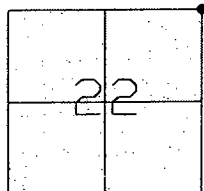


# CORNER RECORD

Document Number CR-08-192  
 County of San Joaquin, California

City of \_\_\_\_\_  
 Brief Legal Description AVENA ROAD @ CARROLTON ROAD  
NORTHEAST CORNER SECTION 22, TOWNSHIP 1 SOUTH, RANGE 8 EAST



## CORNER TYPE

Government Corner ☒ Control ☐  
 Meander ☐ Property ☐  
 Rancho ☐ Other ☐  
 Date of Survey August 14, 2008

## COORDINATES (Optional)

N. \_\_\_\_\_  
 E. \_\_\_\_\_  
 Zone \_\_\_\_\_ NAD27 ☐ NAD83 ☐  
 NAD83 Epoch \_\_\_\_\_  
 Elev. \_\_\_\_\_  
 Vert. Datum: NGVD29 ☐ NAVD88 ☐  
 Meas. Units: Metric ☐ Imperial ☒

Corner - Left as found ☒ Found and tagged ☐ Established ☐ Reestablished ☐ Rebuilt ☐

Identification and type of corner found: Evidence used to identify or procedure used to establish or reestablish the corner:  
SEE SKETCH ON BACKSIDE.

A description of the physical condition of the monument as found and as set or reset:  
SEE SKETCH ON BACKSIDE.

## SURVEYOR'S STATEMENT

This Corner Record was prepared by me or under my direction in conformance with the Land Surveyors' Act on Aug. 27, 2008.

Signed Manuel Solario R.C.E. Number C30890

## COUNTY SURVEYOR'S STATEMENT

This Corner Record was received SEPT. 16TH, 2008 and examined and filed SEPT. 17TH, 2008.

Signed John G. May P.L.S. No. 6186  
 Title Deputy County Surveyor

County Surveyor's Comment \_\_\_\_\_

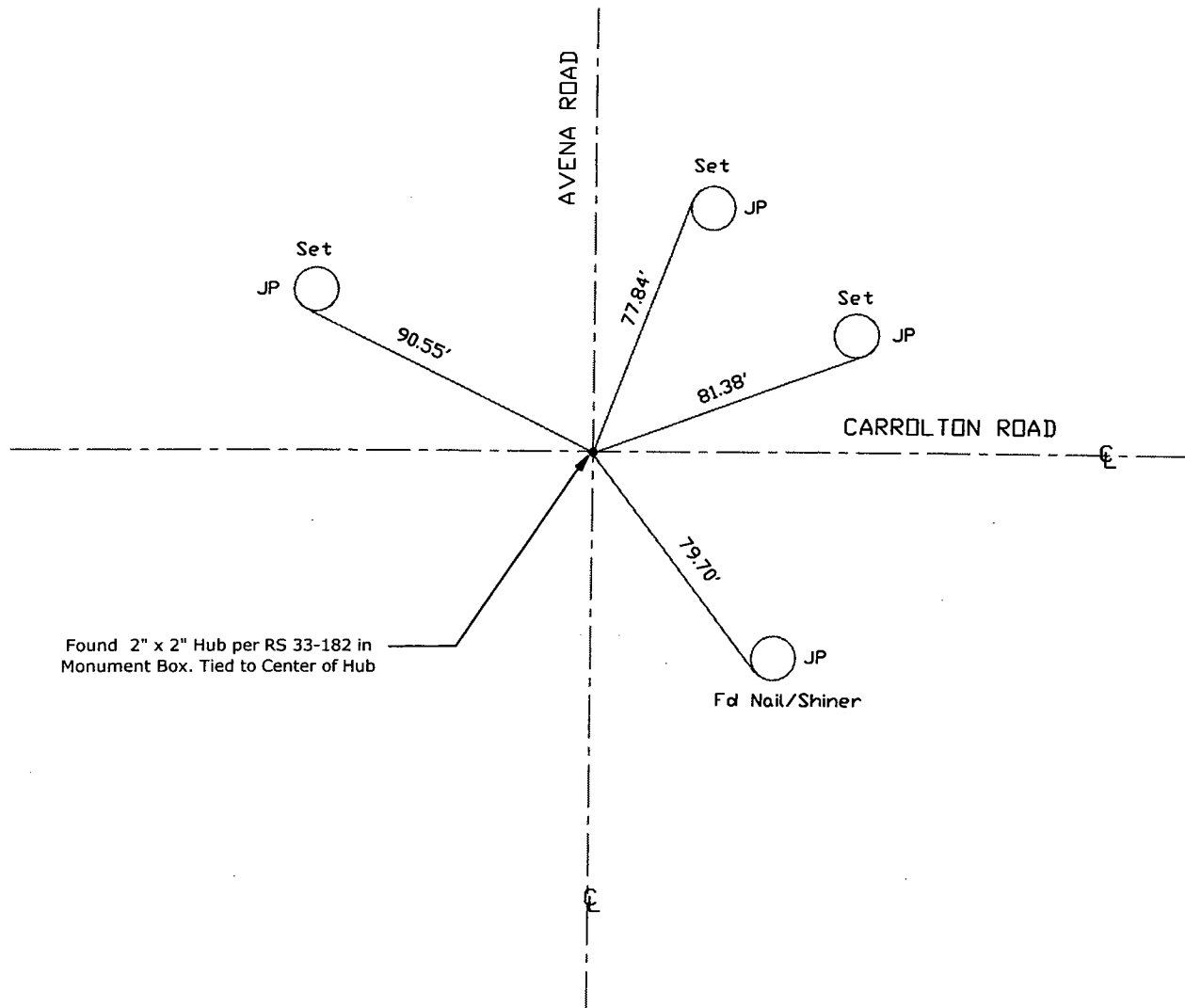


Manuel Solario





N.T.S.



Note: Found Monuments are not tagged  
unless otherwise noted.

"No Attempt Was Made to Verify the Monument(s)"

FP=Fence Post  
GP=Guy Post  
JP=Joint Pole  
LP=Lamp Pole  
PP=Power Pole  
RS=Record of Survey  
SP=Service Pole  
TP=Telephone Pole  
S.F.N=Searched Found Nothing  
N.T.S.=Not To Scale  
Set=Conc. Nail with Brass Washer Stamped  
"S.J. Co.", unless otherwise noted

Note: Set Ties are Brass Washers  
Stamped "S.J.Co. PUBLIC WORKS"