

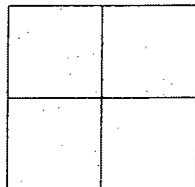
7/21/08

# CORNER RECORD

Document Number CR-08-184  
County of San Joaquin, California

City of \_\_\_\_\_

Brief Legal Description ELM STREET @ SIXTH STREET IN FRENCH CAMP  
(WITHIN SECTION 14, C.M. WEBER GRANT)



## CORNER TYPE

Government Corner ☐ Control ☐  
Meander ☐ Property ☐  
Rancho ☐ Other ☒

Date of Survey October 29, 2005

## COORDINATES (Optional)

N. \_\_\_\_\_  
E. \_\_\_\_\_  
Zone \_\_\_\_\_ NAD27 ☐ NAD83 ☐  
NAD83 Epoch \_\_\_\_\_  
Elev. \_\_\_\_\_  
Vert. Datum: NGVD29 ☐ NAVD88 ☐  
Meas. Units: Metric ☐ Imperial ☒

Corner - Left as found ☒ Found and tagged ☐ Established ☐ Reestablished ☐ Rebuilt ☐

Identification and type of corner found: Evidence used to identify or procedure used to establish or reestablish the corner:  
SEE SKETCH ON BACKSIDE.

A description of the physical condition of the monument as found and as set or reset: \_\_\_\_\_  
FOUND MONUMENT IN GOOD CONDITION. SEE SKETCH ON BACKSIDE.

## SURVEYOR'S STATEMENT

This Corner Record was prepared by me or under my direction in conformance with the Land Surveyors' Act on July 17, 2008.

Signed Manuel Solorio R.C.E. Number C30890



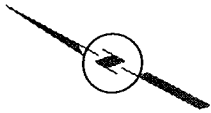
## COUNTY SURVEYOR'S STATEMENT

This Corner Record was received JULY 21<sup>ST</sup>, 2008 and examined and filed JULY 31<sup>ST</sup>, 2008.

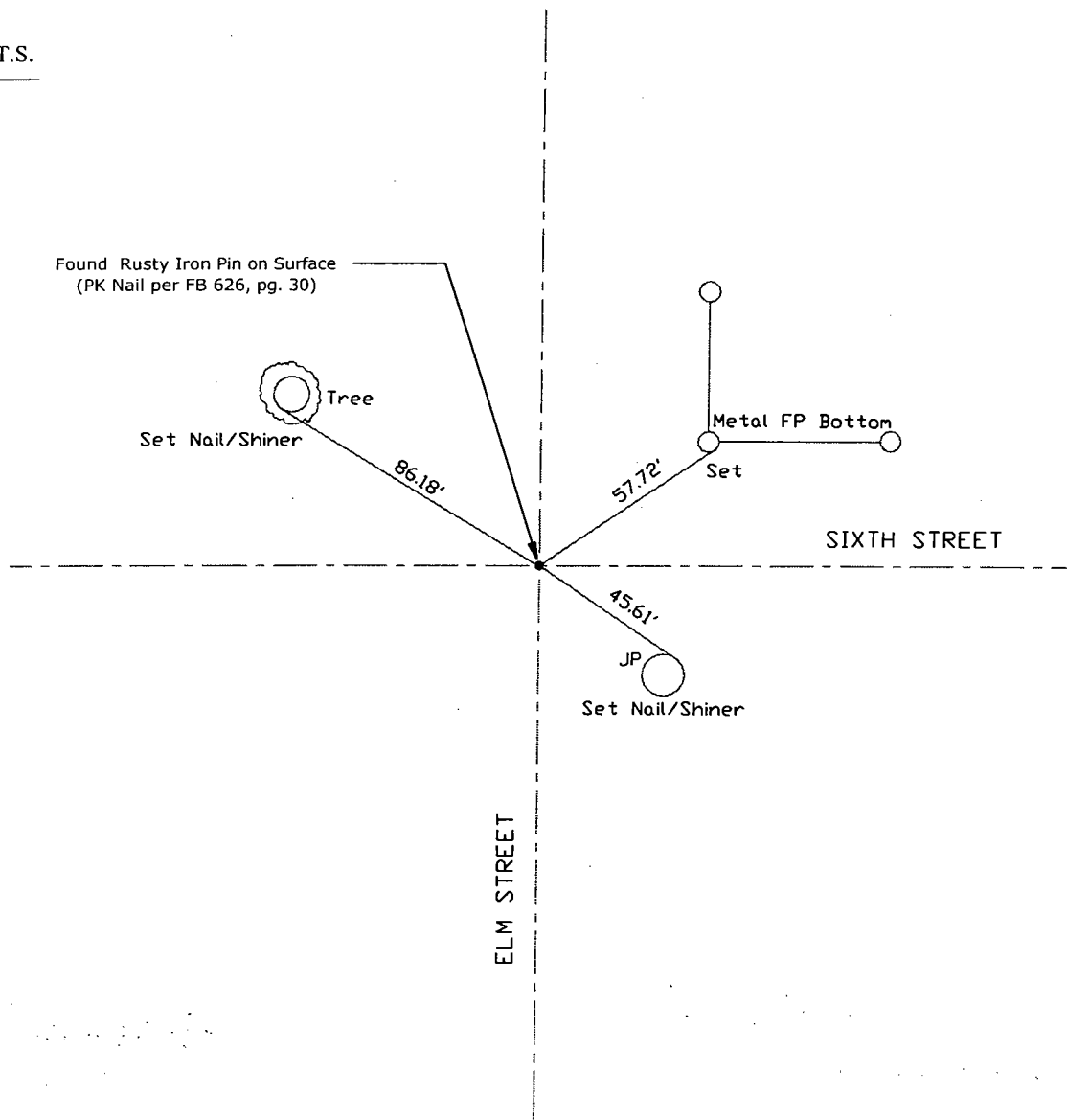
Signed John G. May L.S. No. 6186  
Title Deputy County Surveyor



County Surveyor's Comment \_\_\_\_\_  
THIS CORNER RECORD IS NOT IN COMPLIANCE WITH BOARD RULE 464(c)  
REGARDING SUBMITTAL WITHIN 90 DAYS FROM THE DATE OF SURVEY.



N.T.S.



Note: Found Monuments are not tagged unless otherwise noted.

"No Attempt Was Made to Verify the Monument(s)"

FB=Field Book  
FP=Fence Post  
GP=Guy Post  
JP=Joint Pole  
PP=Power Pole  
SP=Service Pole  
TP=Telephone Pole  
S.F.N=Searched Found Nothing  
N.T.S.=Not To Scale  
Set=Conc. Nail with Brass Washer Stamped  
"S.J. Co.", unless otherwise noted

Note: Set Ties are Brass Washers  
Stamped "S.J. Co. PUBLIC WORKS"