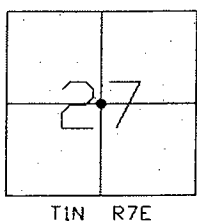


7/21/08

CORNER RECORD

Document Number C2-08-181
County of San Joaquin, California

City of _____
Brief Legal Description ARCH ROAD CENTER OF SECTION 27



CORNER TYPE

Government Corner ☒ Control ☐
Meander ☐ Property ☐
Rancho ☐ Other ☐
Date of Survey July 8, 2008

COORDINATES (Optional)

N. _____
E. _____
Zone _____ NAD27 ☐ NAD83 ☐
NAD83 Epoch _____
Elev. _____
Vert. Datum: NGVD29 ☐ NAVD88 ☐
Meas. Units: Metric ☐ Imperial ☒

Corner - Left as found ☒ Found and tagged ☐ Established ☐ Reestablished ☐ Rebuilt ☐

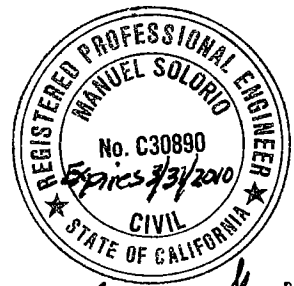
Identification and type of corner found; Evidence used to identify or procedure used to establish or reestablish the corner:
SEE SKETCH ON BACKSIDE.

A description of the physical condition of the monument as found and as set or reset:
SEE SKETCH ON BACKSIDE.

SURVEYOR'S STATEMENT

This Corner Record was prepared by me or under my direction in conformance with the Land Surveyors' Act on July 17, 2008.

Signed Manuel Solorio R.C.E. Number C30890



COUNTY SURVEYOR'S STATEMENT

This Corner Record was received July 24TH, 2008 and examined and filed July 25TH, 2008.

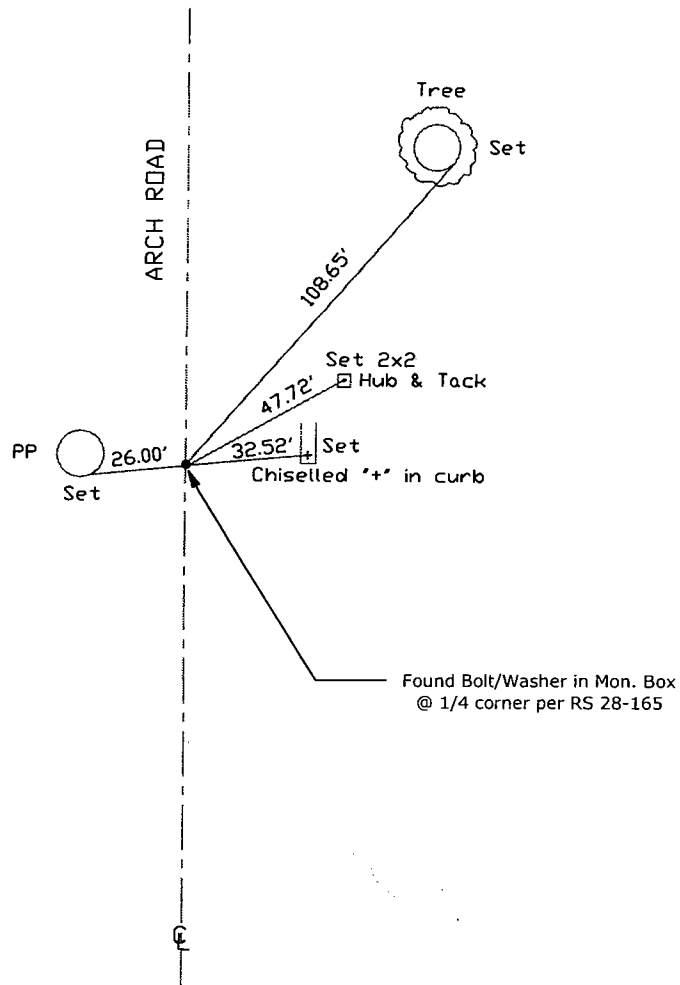
Signed John G. May P.L.S. No. 6186
Title Deputy County Surveyor



County Surveyor's Comment _____



N.T.S.



Note: Found Monuments are not tagged unless otherwise noted.

"No Attempt Was Made to Verify the Monument(s)"

FP=Fence Post
GP=Guy Post
JP=Joint Pole
LP=Lamp Pole
PP=Power Pole
RS=Record of Survey
SP=Service Pole
TP=Telephone Pole
S.F.N=Searched Found Nothing
N.T.S.=Not To Scale
Set=Conc. Nail with Brass Washer Stamped
"S.J. Co.", unless otherwise noted

Note: Set Ties are Brass Washers
Stamped "S.J.Co. PUBLIC WORKS"