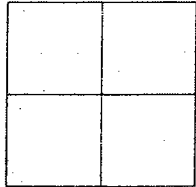


CORNER RECORD

Document Number CR-08-178
 City of _____ County of San Joaquin, California

Brief Legal Description AUSTIN ROAD 2401' NORTH OF NORTHLAND ROAD
(WITHIN SECTION 22, TOWNSHIP 1 SOUTH, RANGE 7 EAST)



CORNER TYPE

Government Corner ☐ Control ☐
 Meander ☐ Property ☐
 Rancho ☐ Other ☒
 Date of Survey June 27, 2008

COORDINATES (Optional)

N. _____
 E. _____
 Zone _____ NAD27 ☐ NAD83 ☐
 NAD83 Epoch _____
 Elev. _____
 Vert. Datum: NGVD29 ☐ NAVD88 ☐
 Meas. Units: Metric ☐ Imperial ☒

Corner - Left as found ☐ Found and tagged ☐ Established ☐ Reestablished ☐ Rebuilt ☒

Identification and type of corner found: Evidence used to identify or procedure used to establish or reestablish the corner:
SEE SKETCH ON BACKSIDE.

A description of the physical condition of the monument as found and as set or reset:
SEE SKETCH ON BACKSIDE.

SURVEYOR'S STATEMENT

This Corner Record was prepared by me or under my direction in conformance with
 the Land Surveyors' Act on July 17, 2008.

Signed Manuel Solorio R.C.E. Number C30890

COUNTY SURVEYOR'S STATEMENT

This Corner Record was received July 24TH, 2008 and examined
 and filed July 25TH, 2008.

Signed John G. May P.L.S. No. 6186
 Title Deputy County Surveyor

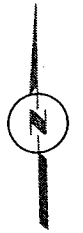
County Surveyor's Comment _____

(D.D. Sheet No. 46)
 (Job No. 220715)

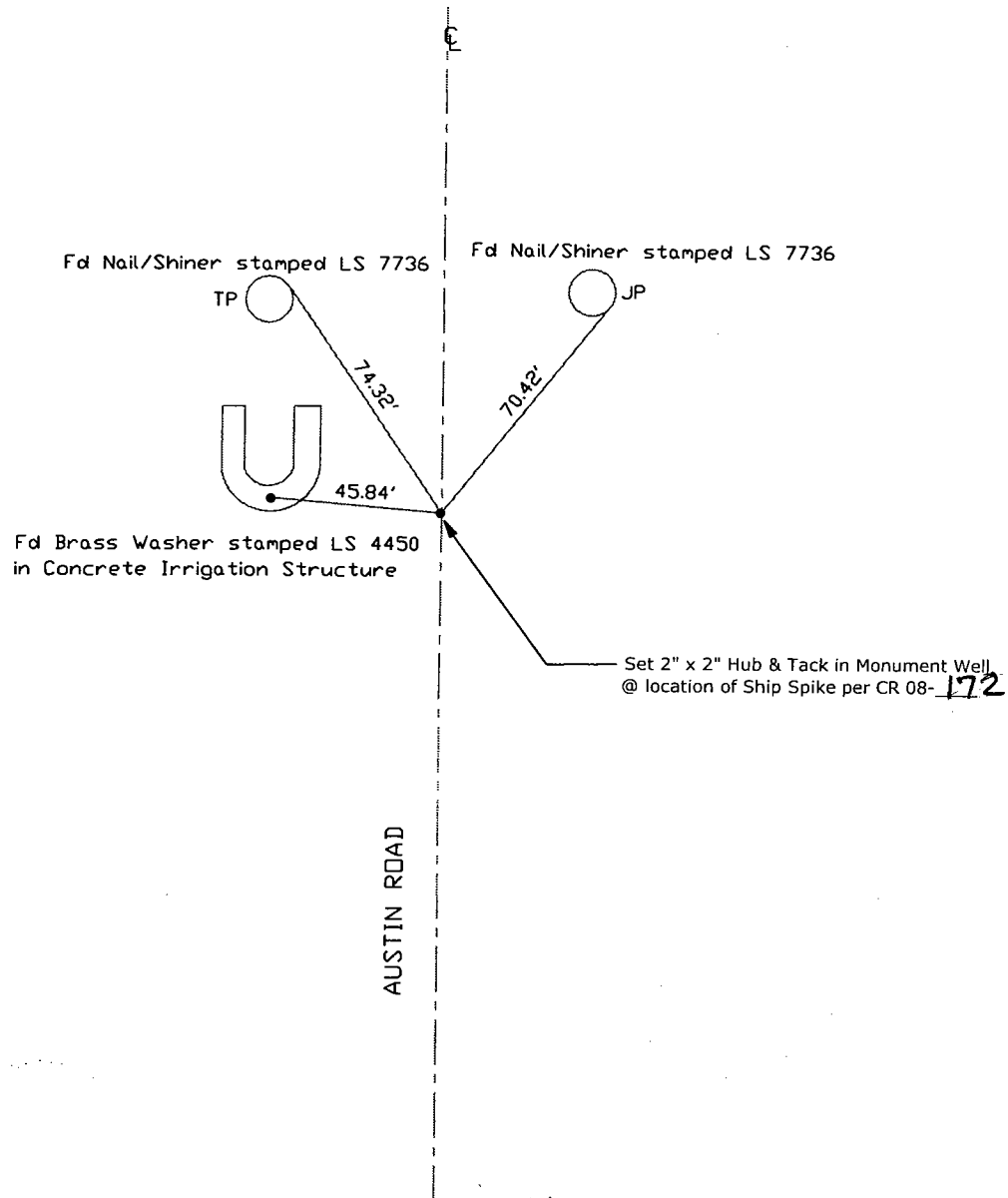


Manuel Solorio





N.T.S.



Note: Found Monuments are not tagged unless otherwise noted.

"No Attempt Was Made to Verify the Monument(s)"

FP=Fence Post
 GP=Guy Post
 JP=Joint Pole
 PP=Power Pole
 SP=Service Pole
 TP=Telephone Pole
 S.F.N=Searched Found Nothing
 N.T.S.=Not To Scale
 Fd=Conc. Nail with Brass Washer Stamped
 "S.J. Co.", unless otherwise noted

Note: Found Ties are Brass Washers Stamped "S. J. Co. PUBLIC WORKS" per CR 08-172, unless otherwise noted