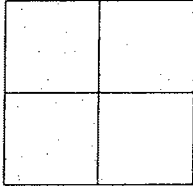


# CORNER RECORD

Document Number CR-08-175  
County of San Joaquin, California

City of \_\_\_\_\_

Brief Legal Description AUSTIN ROAD @ LATHROP ROAD  
(WITHIN SECTION 27, TOWNSHIP 1 SOUTH, RANGE 7 EAST)



## CORNER TYPE

Government Corner ☐ Control ☐  
Meander ☐ Property ☐  
Rancho ☐ Other ☒

Date of Survey May 23, 2008

## COORDINATES (Optional)

N. \_\_\_\_\_  
E. \_\_\_\_\_  
Zone \_\_\_\_\_ NAD27 ☐ NAD83 ☐  
NAD83 Epoch \_\_\_\_\_  
Elev. \_\_\_\_\_  
Vert. Datum: NGVD29 ☐ NAVD88 ☐  
Meas. Units: Metric ☐ Imperial ☒

Corner - Left as found ☒ Found and tagged ☐ Established ☐ Reestablished ☐ Rebuilt ☐

Identification and type of corner found: Evidence used to identify or procedure used to establish or reestablish the corner:  
SEE SKETCH ON BACKSIDE.

A description of the physical condition of the monument as found and as set or reset:  
SEE SKETCH ON BACKSIDE.

## SURVEYOR'S STATEMENT

This Corner Record was prepared by me or under my direction in conformance with  
the Land Surveyors' Act on July 17, 2008.

Signed Manuel Solorio R.C.E. Number C30890



Manuel Solorio

## COUNTY SURVEYOR'S STATEMENT

This Corner Record was received JULY 23<sup>RD</sup>, 2008 and examined  
and filed JULY 24<sup>TH</sup>, 2008.

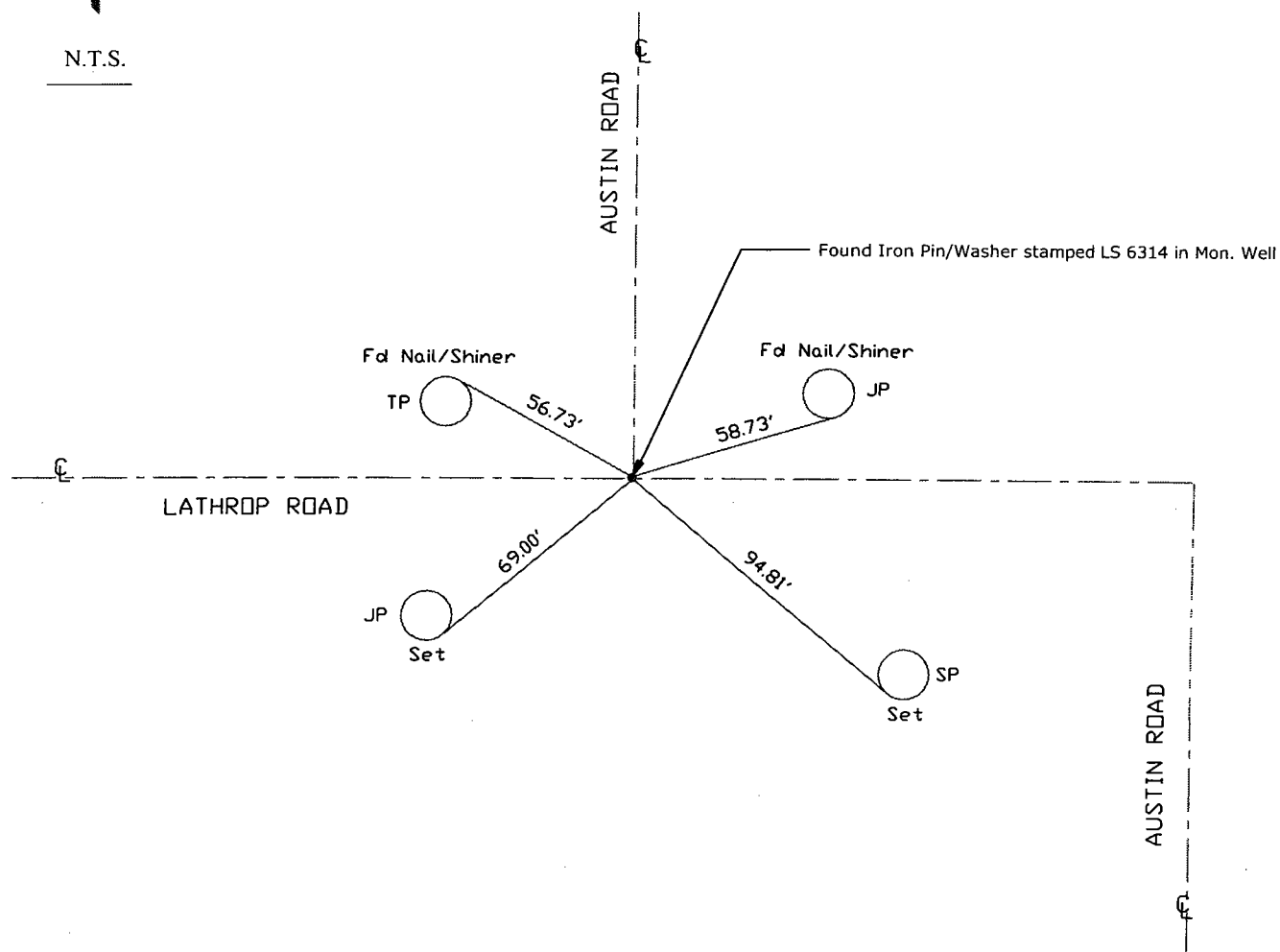
Signed John G. May P.L.S. No. 6186  
Title Deputy County Surveyor



County Surveyor's Comment \_\_\_\_\_



N.T.S.



Note: Found Monuments are not tagged  
unless otherwise noted.

"No Attempt Was Made to Verify the Monument(s)"

Note: Set Ties are Brass Washers  
Stamped "S.J.Co. PUBLIC WORKS"

FP=Fence Post  
FH=Fire Hydrant  
JP=Joint Pole  
PP=Power Pole  
SP=Service Pole  
TP=Telephone Pole  
S.F.N=Searched Found Nothing  
N.T.S.=Not To Scale  
Set=Conc. Nail with Brass Washer Stamped  
"S.J. Co.", unless otherwise noted