

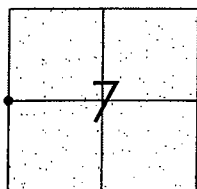
7/15/08

CORNER RECORD

Document Number CR-08-161
County of San Joaquin, California

City of _____

Brief Legal Description HEWITT ROAD WEST 1/4 CORNER SECTION 7



T1N R9E

CORNER TYPE

Government Corner ☒ Control ☐
Meander ☐ Property ☐
Rancho ☐ Other ☐

Date of Survey June 20, 2008

COORDINATES (Optional)

N. _____
E. _____
Zone _____ NAD27 ☐ NAD83 ☐
NAD83 Epoch _____
Elev. _____
Vert. Datum: NGVD29 ☐ NAVD88 ☐
Meas. Units: Metric ☐ Imperial ☒

Corner - Left as found ☐ Found and tagged ☐ Established ☐ Reestablished ☐ Rebuilt ☒

Identification and type of corner found: Evidence used to identify or procedure used to establish or reestablish the corner:
SEE SKETCH ON BACKSIDE.

A description of the physical condition of the monument as found and as set or reset: _____
SEE SKETCH ON BACKSIDE.

SURVEYOR'S STATEMENT

This Corner Record was prepared by me or under my direction in conformance with the Land Surveyors' Act on July 10, 2008.

Signed Manuel Solorio R.C.E. Number C30890

COUNTY SURVEYOR'S STATEMENT

This Corner Record was received JULY 15TH, 2008 and examined and filed JULY 18TH, 2008.

Signed John G. May P.L.S. No. 6186
Title Deputy County Surveyor

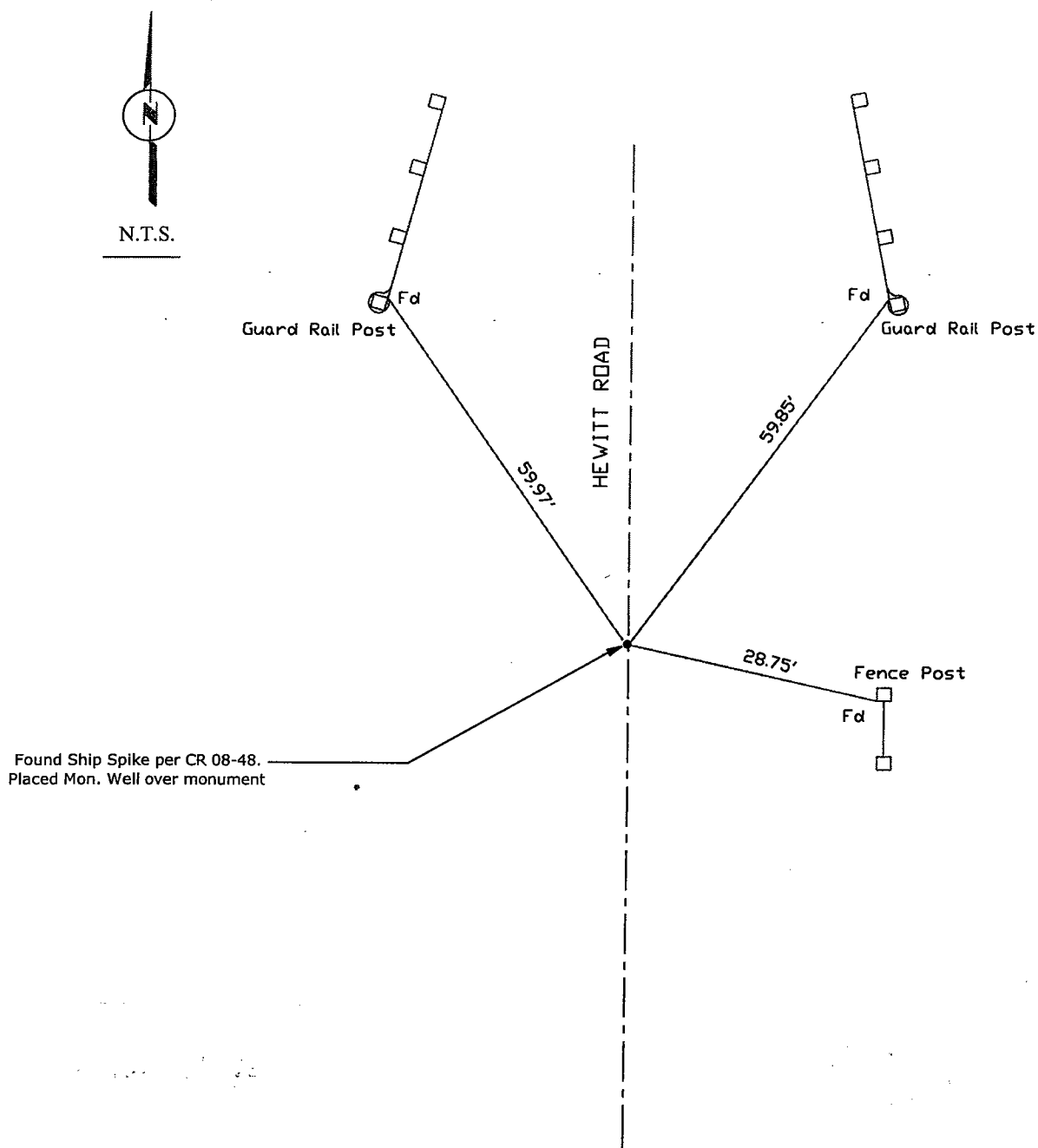
County Surveyor's Comment _____

(D.D. Sheet Nos. 39 & 40)
(Job No. 220741)



Manuel Solorio





Note: Found Monuments are not tagged unless otherwise noted.

"No Attempt Was Made to Verify the Monument(s)"

Note: Found Ties are Brass Washers Stamped "S.J.Co. PUBLIC WORKS" per CR 08-48, unless otherwise noted

FP=Fence Post
 GP=Guy Post
 JP=Joint Pole
 PP=Power Pole
 SP=Service Pole
 TP=Telephone Pole
 S.F.N=Searched Found Nothing
 N.T.S.=Not To Scale
 Fd=Conc. Nail with Brass Washer Stamped
 "S.J. Co.", unless otherwise noted