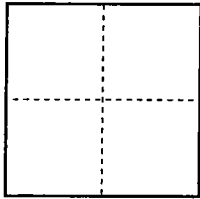


# CORNER RECORD

City of Stockton

Doc. Number CR-08-157  
County of San Joaquin, California

Brief Legal Description: Centerline monuments of planned future right-of-way as shown on Record of Survey, filed for record in Book 36 of Surveys, at page 124, San Joaquin County Records



## CORNER TYPE

Government Corner ☐ Control ☐  
Meander ☐ Property ☐  
Rancho ☐ Other ☒

Date of Survey June 23, 2008

## COORDINATES (Optional)

N. \_\_\_\_\_  
E. \_\_\_\_\_  
Zone \_\_\_\_\_ NAD27 ☐ NAD83 ☐  
NAD83 Epoch \_\_\_\_\_  
Elev. \_\_\_\_\_  
Vert. Datum: NGVD29 ☐ NAVD88 ☐  
Meas. Units: Metric ☐ Imperial ☒

Corner - Left as found ☐ Found and tagged ☐ Established ☐ Reestablished ☒ Rebuilt ☐

Identification and type of corner found: Evidence used to identify or procedure used to establish or reestablish the corner:  
Found the perimeter monuments of the 11.68 Ac. Area "A" and the centerline monument at the intersection of Whistler Way and Windmill Park Drive as shown on Record of Survey 36-124. Reset monuments along the proposed centerline of future right-of-way beginning at the southerly line of said Area "A" and checking into the centerline monument at said intersection.

A description of the physical condition of the monument as found and as set or reset:

Set 3/4" diameter by 30" long iron rebar pin with plastic cap stamped "L.S. 7520" in a monument well.

## SURVEYOR'S STATEMENT

This Corner Record was prepared by me or under my direction in conformance with the Land Surveyors' Act on June 24, 2008.

Signed David W. Lanphear L.S. 7520



## COUNTY SURVEYOR'S STATEMENT

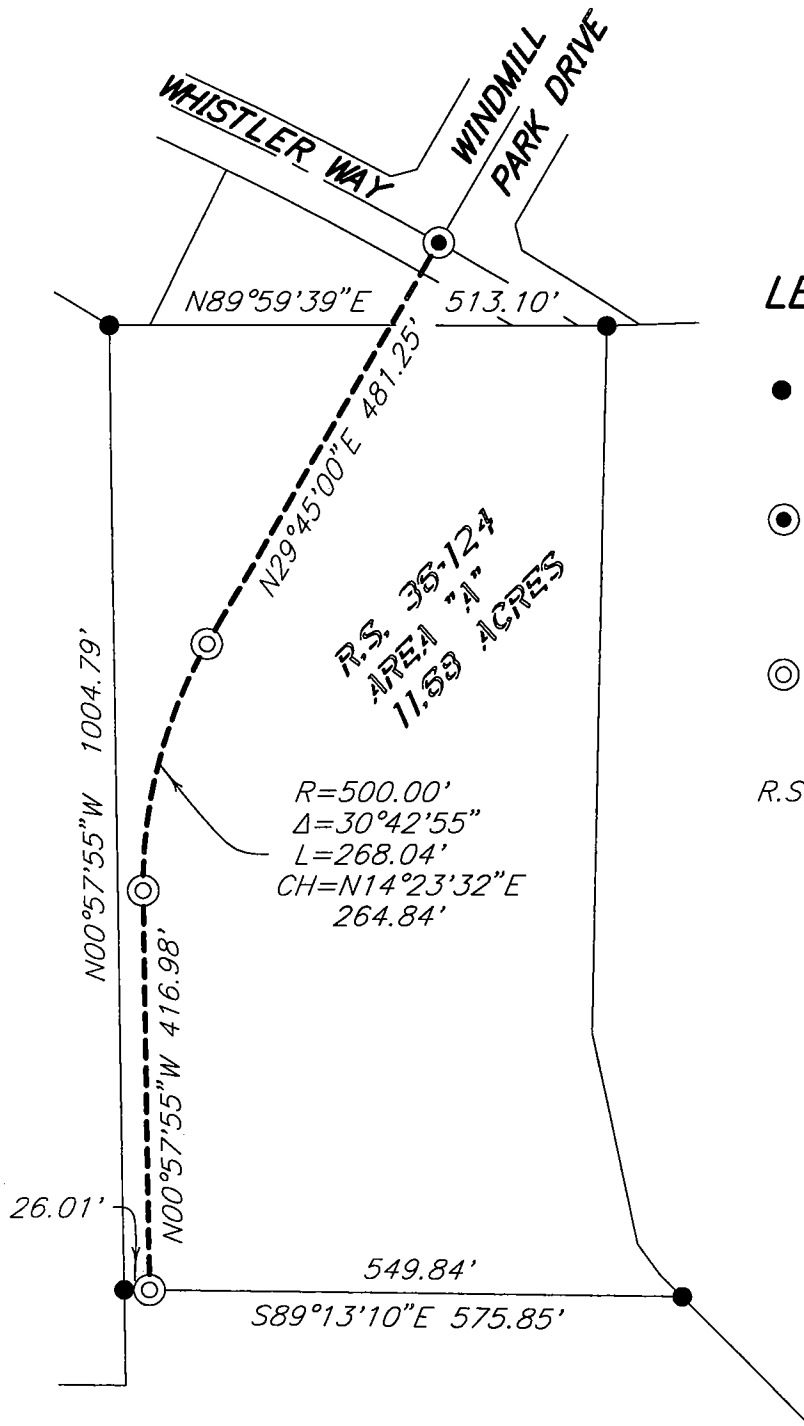
This Corner Record was received JULY 3<sup>RD</sup>, 2008 and examined and filed JULY 7<sup>TH</sup>, 2008.

Signed John G. May L.S. 6186  
Title Deputy County Surveyor



County Surveyor's Comment \_\_\_\_\_  
\_\_\_\_\_  
\_\_\_\_\_

(D.D. Sheet No. 29B)



### LEGEND:

- FOUND 3/4" IRON PIN WITH PLASTIC CAP STAMPED "L.S. 7520" PER R.S. 36-124
- ⊙ FOUND 3/4" REBAR WITH CAP STAMPED "PLS 5859" IN MONUMENT WELL PER R.S. 36-124
- ⊙ SET 3/4" DIAMETER BY 30" LONG IRON PIN WITH PLASTIC CAP STAMPED "L.S. 7520" IN MONUMENT WELL

R.S. RECORD OF SURVEY

