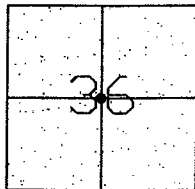


# CORNER RECORD

Document Number CR-08-148  
County of San Joaquin, California

Brief Legal Description GAWNE ROAD  
CENTER OF SEC. 36



T1N R8E

## CORNER TYPE

Government Corner ☒ Control ☐  
Meander ☐ Property ☐  
Rancho ☐ Other ☐

Date of Survey February 14, 2007

## COORDINATES (Optional)

N. \_\_\_\_\_  
E. \_\_\_\_\_  
Zone \_\_\_\_\_ NAD27 ☐ NAD83 ☐  
NAD83 Epoch \_\_\_\_\_  
Elev. \_\_\_\_\_  
Vert. Datum: NGVD29 ☐ NAVD88 ☐  
Meas. Units: Metric ☐ Imperial ☒

Corner - Left as found ☒ Found and tagged ☐ Established ☐ Reestablished ☐ Rebuilt ☐

Identification and type of corner found: Evidence used to identify or procedure used to establish or reestablish the corner:  
SEE SKETCH ON BACKSIDE.

A description of the physical condition of the monument as found and as set or reset: \_\_\_\_\_  
FOUND MONUMENT IN GOOD CONDITION. SEE SKETCH ON BACKSIDE.

## SURVEYOR'S STATEMENT

This Corner Record was prepared by me or under my direction in conformance with  
the Land Surveyors' Act on June 25, 2008.

Signed Manuel Solorio R.C.E. Number C30890

## COUNTY SURVEYOR'S STATEMENT

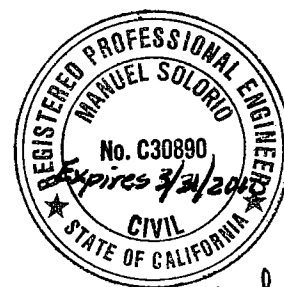
This Corner Record was received July 3<sup>RD</sup>, 2008 and examined  
and filed July 3<sup>RD</sup>, 2008.

Signed John G. May L.S. No. 6186

Title Deputy County Surveyor

County Surveyor's Comment \_\_\_\_\_  
THIS CORNER RECORD IS NOT IN COMPLIANCE WITH BOARD RULE 464(c)  
REGARDING SUBMITTAL WITHIN 90 DAYS FROM THE DATE OF SURVEY.

(D.D. Sheet No. 39 )  
(Job No. 750108)

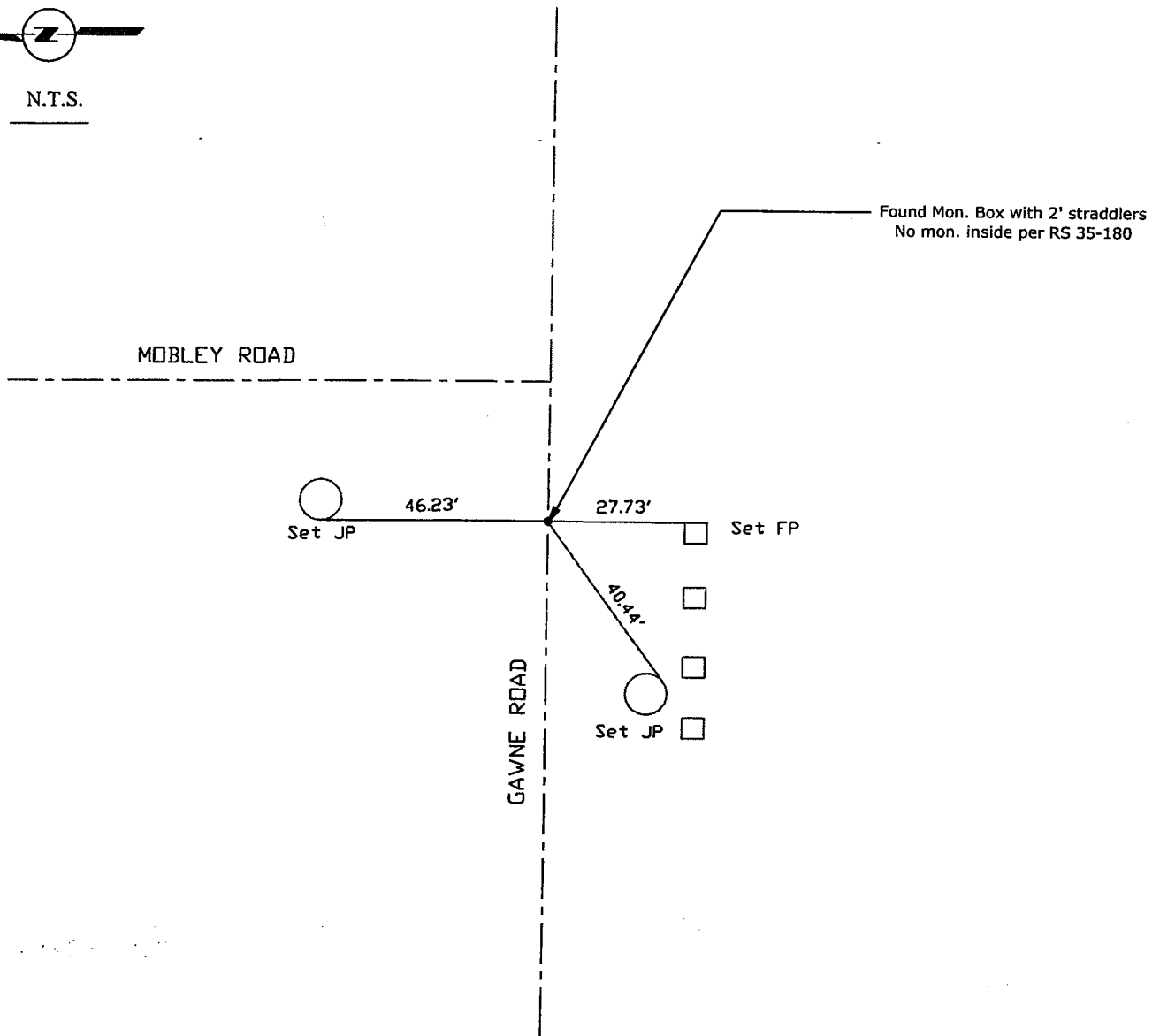


Manuel Solorio





N.T.S.



Note: Found Monuments are not tagged unless otherwise noted.

"No Attempt Was Made to Verify the Monument(s)"

FP=Fence Post  
GP=Guy Post  
JP=Joint Pole  
PP=Power Pole  
SP=Service Pole  
TP=Telephone Pole  
S.F.N=Searched Found Nothing  
N.T.S.=Not To Scale  
Set=Conc. Nail with Brass Washer Stamped  
"S.J. Co.", unless otherwise noted

Note: Set Ties are Brass Washers  
Stamped "S.J.Co. PUBLIC WORKS"