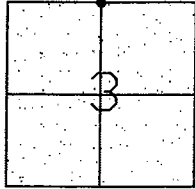


CORNER RECORD

Document Number CR-08-146
City of _____ County of San Joaquin, California

Brief Legal Description BRANDT ROAD NORTH QUARTER CORNER SECTION 3



T3N R8E

CORNER TYPE

Government Corner ☒ Control ☐
Meander ☐ Property ☐
Rancho ☐ Other ☐

Date of Survey February 6, 2007

COORDINATES (Optional)

N. _____
E. _____
Zone _____ NAD27 ☐ NAD83 ☐
NAD83 Epoch _____
Elev. _____
Vert. Datum: NGVD29 ☐ NAVD88 ☐
Meas. Units: Metric ☐ Imperial ☒

Corner - Left as found ☒ Found and tagged ☐ Established ☐ Reestablished ☐ Rebuilt ☐

Identification and type of corner found: Evidence used to identify or procedure used to establish or reestablish the corner:
SEE SKETCH ON BACKSIDE.

A description of the physical condition of the monument as found and as set or reset: _____
FOUND MONUMENT IN GOOD CONDITION. SEE SKETCH ON BACKSIDE.

SURVEYOR'S STATEMENT

This Corner Record was prepared by me or under my direction in conformance with
the Land Surveyors' Act on June 25, 2008.

Signed Manuel Solorio R.C.E. Number C30890

COUNTY SURVEYOR'S STATEMENT

This Corner Record was received JULY 3RD, 2008 and examined
and filed JULY 3RD, 2008.

Signed John G. May L.S. No. 6186
Title Deputy County Surveyor

County Surveyor's Comment _____

THIS CORNER RECORD IS NOT IN COMPLIANCE WITH BOARD RULE 464(c)

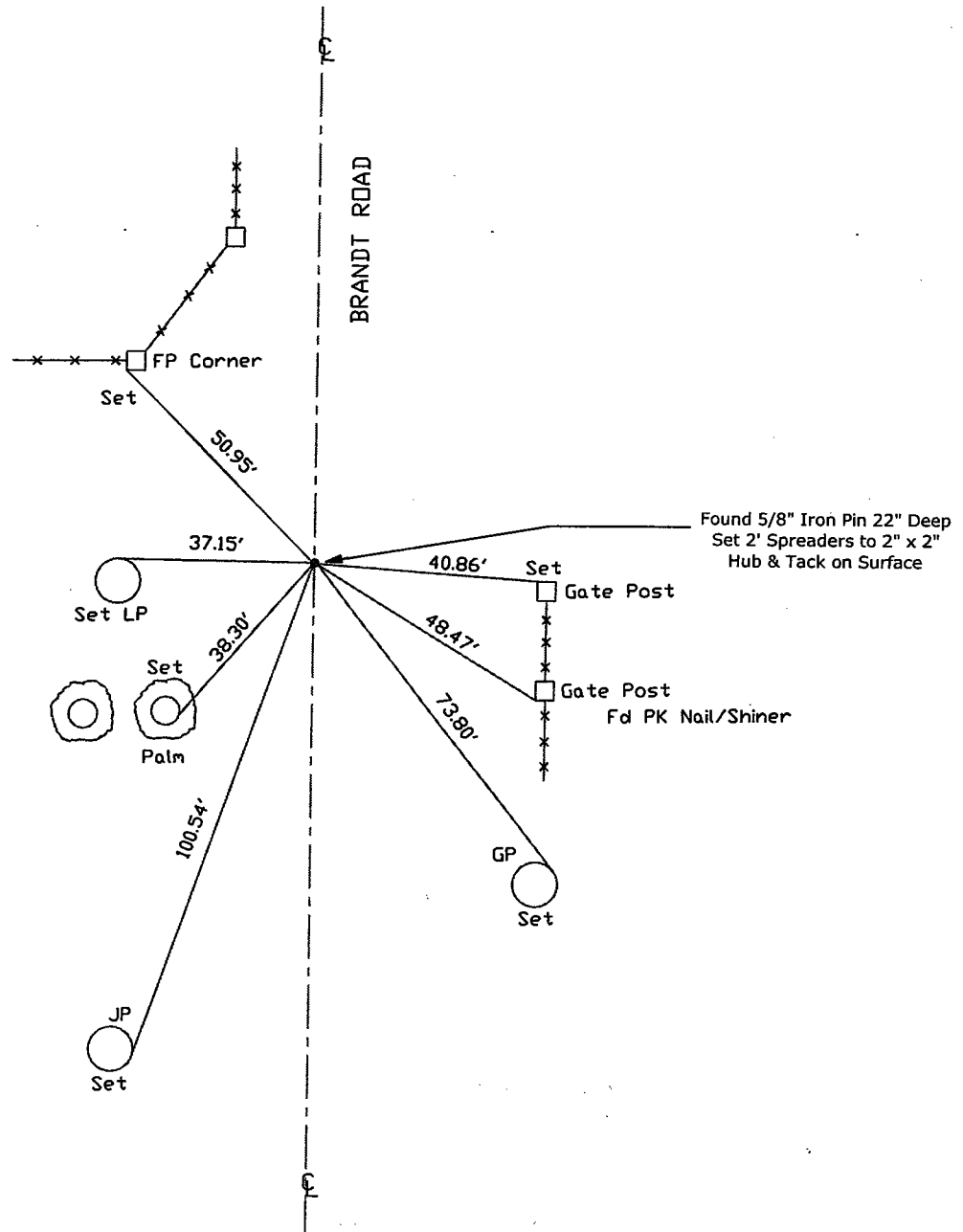
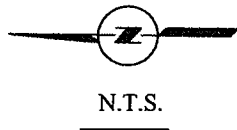
REGARDING SUBMITTAL WITHIN 90 DAYS FROM THE DATE OF SURVEY.

(D.D. Sheet Nos. 9 & 18)
(Job No. 750108)



Manuel Solorio





Note: Found Monuments are not tagged
unless otherwise noted.

"No Attempt Was Made to Verify the Monument(s)"

FP=Fence Post
GP=Guy Post
JP=Joint Pole
LP=Lamp Post
SP=Service Pole
TP=Telephone Pole
S.F.N=Searched Found Nothing
N.T.S.=Not To Scale
Set=Conc. Nail with Brass Washer Stamped
"S.J. Co.", unless otherwise noted

Note: Set Ties are Brass Washers
Stamped "S.J.Co. PUBLIC WORKS"