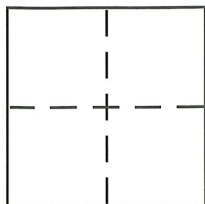


CORNER RECORD

Document Number CR-08-143
City of STOCKTON County of SAN JOAQUIN, California

Brief Legal Description EAST LINE OF LOT 2--20 M&P 23



CORNER TYPE

Government Corner ☐ Control ☐
Meander ☐ Property ☒
Rancho ☐ Other ☐
Date of Survey APRIL 24, 2008

COORDINATES (Optional)

N. _____
E. _____
Zone _____ NAD27 ☐ NAD83 ☐
NAD83 Epoch _____
Elev. _____
Vert. Datum: NGVD29 ☐ NAVD88 ☐
Meas. Units: Metric ☐ Imperial ☒

Corner - Left as found ☒ Found and tagged ☐ Established ☐ Reestablished ☐ Rebuilt ☐

Identification and type of corner found: Evidence used to identify or procedure used to establish or reestablish the corner:

SEE SKETCH ON BACK.

A description of the physical condition of the monument as found and as set or reset:

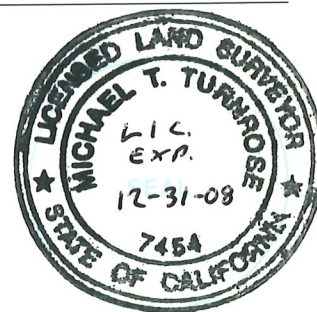
SEE SKETCH ON BACK.

SURVEYOR'S STATEMENT

This Corner Record was prepared by me or under my direction in conformance with

the Land Surveyor's Act on MAY 6, 2008

Signed Michael T. Turnrose (P.L.S. or R.C.E. No. 7454)



COUNTY SURVEYOR'S STATEMENT

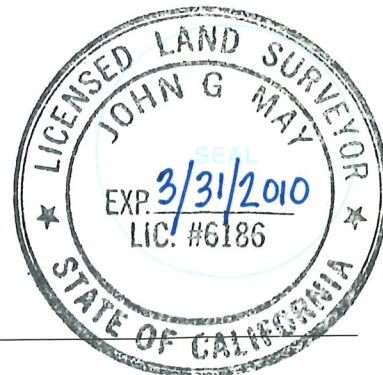
This Corner Record was received May 7, 2008

and examined and filed May 15, 2008

Signed John G. May P.L.S. or R.C.E. No. 60186

Title Deputy County Surveyor

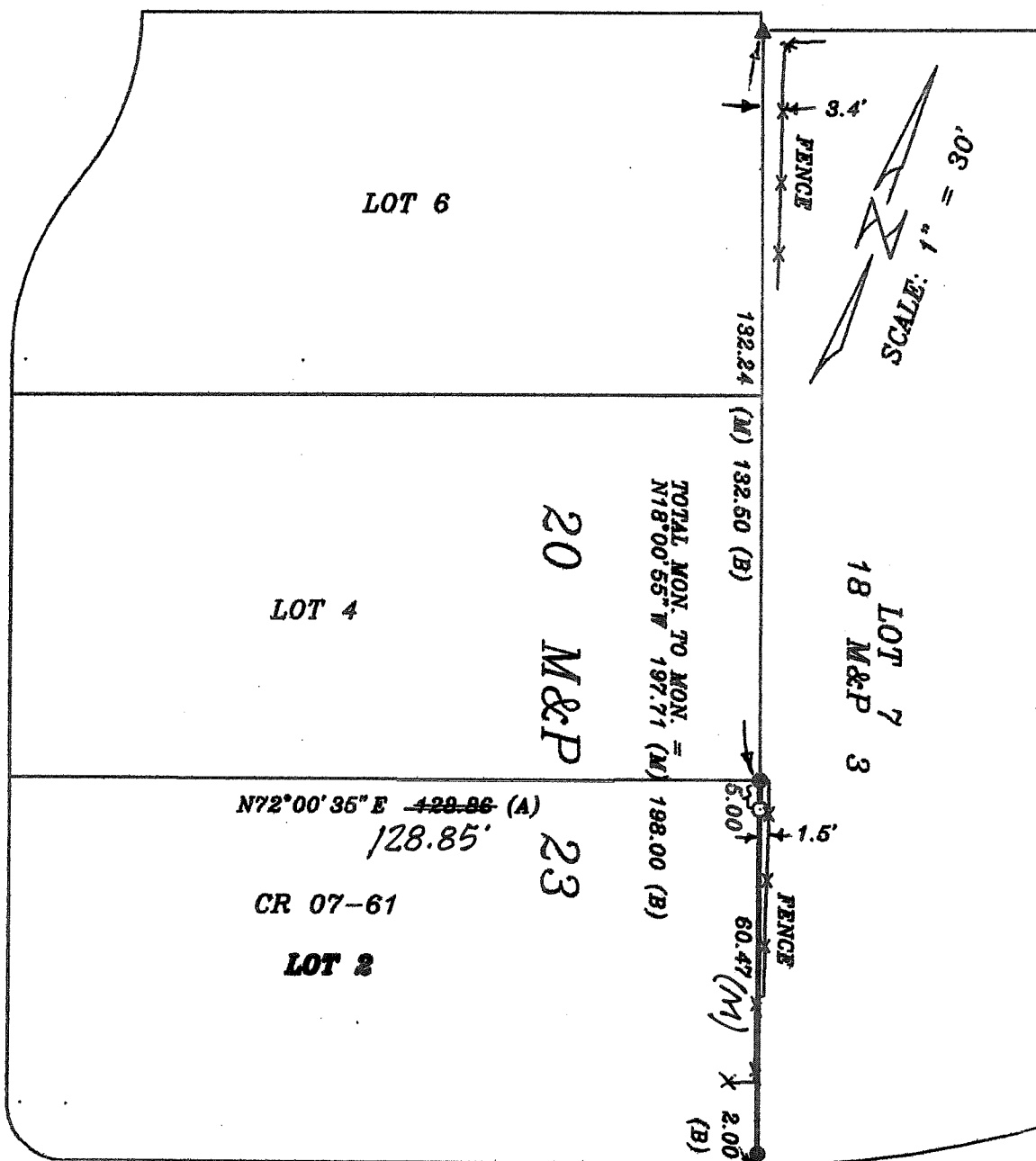
County Surveyor's Comment _____



LAKEVIEW COURT

S18°02'00"E
227.68 (A)

25.00'



LEGEND & NOTES:

CRYSTAL WAY 50' WIDE PER (B)

- INDICATES SET 3/4" X 30" IRON PIPE WITH PLASTIC PLUG "TURNROSE L.S. 7454"
- ⊙ INDICATES 1/2" IRON PIPE-- WITH TAG R.E. 20948 IN MONUMENT WELL AS PER CR 07-61
- INDICATES FOUND 1/2" IRON PIPE--OPEN-- ACCEPTED AS PER 20 M&P 23
- (M) INDICATES MEASURED AS PER THIS SURVEY
- ▲ INDICATES FOUND 3/4" REBAR ACCEPTED AS PER 20 M&P 23
- M&P MAPS AND PLATS
- S.J.C.R. SAN JOAQUIN COUNTY RECORDS

DISTANCES SHOWN ARE IN FEET OR DECIMALS THEREOF

REFERENCES:

- (A) CORNER RECORD--CR 07-61
- (B) COUNTRY CLUB PARK UNIT NO. 3--20 M&P 23

DD SHEET NO. 31A

30A