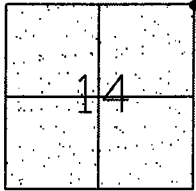


CORNER RECORD

Document Number CR-08-131
County of San Joaquin, California

City of _____

Brief Legal Description BAKER ROAD @ BEECHER ROAD
NE CORNER OF SEC. 14



T2N R7E

CORNER TYPE

Government Corner ☒ Control ☐
Meander ☐ Property ☐
Rancho ☐ Other ☐
Date of Survey June 29, 2007

COORDINATES (Optional)

N. _____
E. _____
Zone _____ NAD27 ☐ NAD83 ☐
NAD83 Epoch _____
Elev. _____
Vert. Datum: NGVD29 ☐ NAVD88 ☐
Meas. Units: Metric ☐ Imperial ☒

Corner - Left as found ☐ Found and tagged ☐ Established ☐ Reestablished ☐ Rebuilt ☒

Identification and type of corner found: Evidence used to identify or procedure used to establish or reestablish the corner:
SEE SKETCH ON BACKSIDE.

A description of the physical condition of the monument as found and as set or reset: _____
FOUND MONUMENT IN GOOD CONDITION. PLACED MONUMENT WELL OVER MONUMENT. SEE SKETCH ON BACKSIDE.

SURVEYOR'S STATEMENT

This Corner Record was prepared by me or under my direction in conformance with
the Land Surveyors' Act on April 28, 2008.

Signed Manuel Solario R.C.E. Number C30890

COUNTY SURVEYOR'S STATEMENT

This Corner Record was received MAY 2ND, 2008 and examined
and filed MAY 5TH, 2008.

Signed John G. May L.S. No. 6186
Title Deputy County Surveyor

County Surveyor's Comment _____
THIS CORNER RECORD IS NOT IN COMPLIANCE WITH BOARD RULE 464(c)
REGARDING SUBMITTAL WITHIN 90 DAYS FROM THE DATE OF SURVEY.

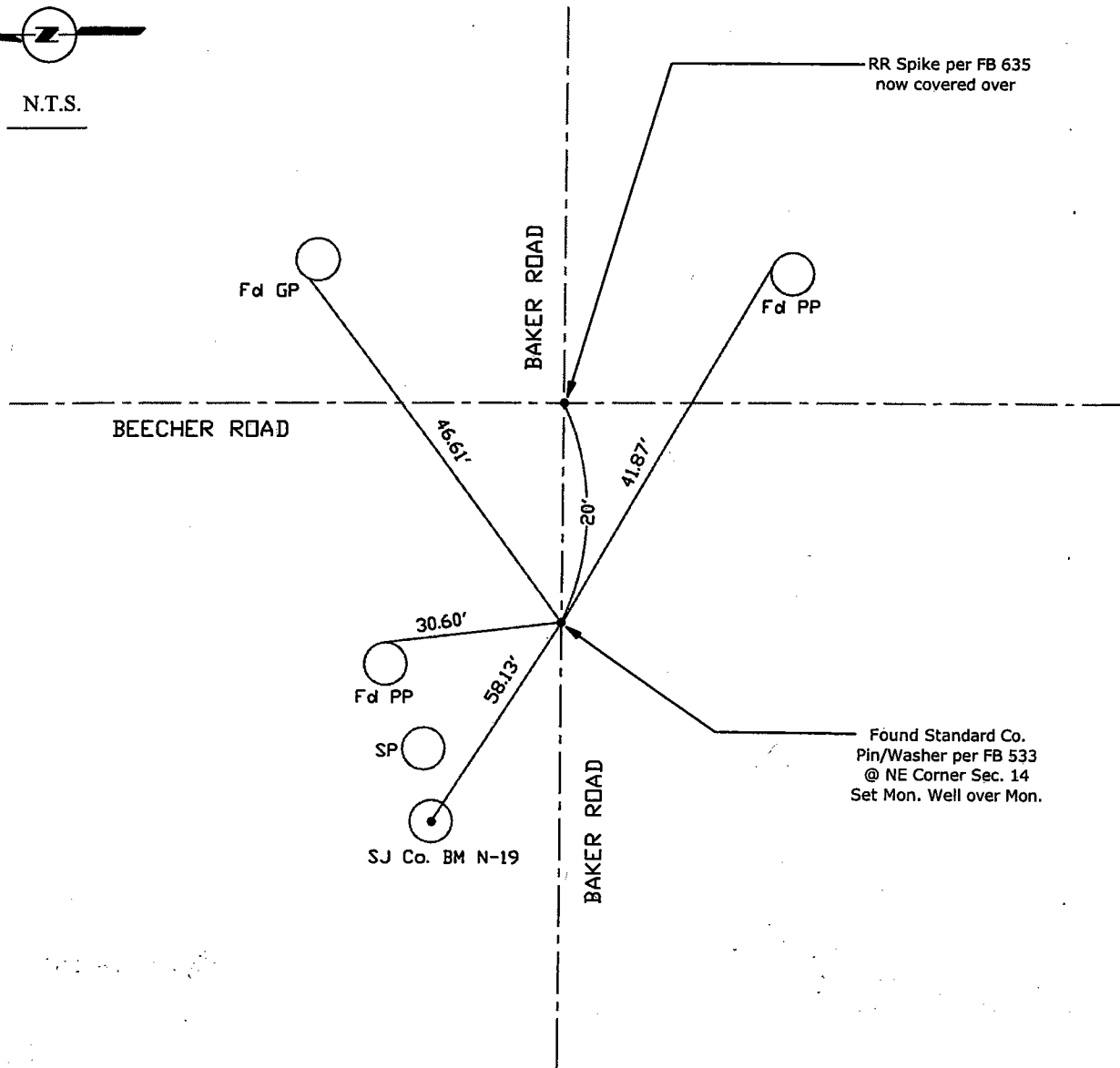
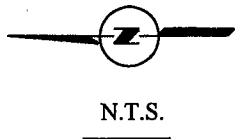
(D.D. Sheet No. 26)
(Job No. 750108)



Manuel Solario



5/5/2008



Note: Found Monuments are not tagged unless otherwise noted.

"No Attempt Was Made to Verify the Monument(s)"

BM=Benchmark
GP=Guy Post
JP=Joint Pole
PR=Power Pole
SP=Service Pole
TP=Telephone Pole
S.F.N=Searched Found Nothing
N.T.S.=Not To Scale
Set=Conc. Nail with Brass Washer Stamped
"S.J. Co." unless otherwise noted

Note: Fd Ties are Brass Washers
Stamped "S.J.Co. PUBLIC WORKS"
per CR 08-_____ unless otherwise noted