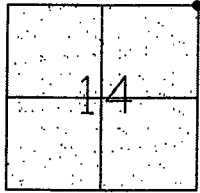


# CORNER RECORD

City of \_\_\_\_\_

Document Number 02-08-127  
County of San Joaquin, California

Brief Legal Description BAKER ROAD @ BEECHER ROAD  
NE CORNER OF SEC. 14



T2N R7E

## CORNER TYPE

Government Corner ☒ Control ☐  
Meander ☐ Property ☐  
Rancho ☐ Other ☐  
Date of Survey January 24, 2007

## COORDINATES (Optional)

N. \_\_\_\_\_  
E. \_\_\_\_\_  
Zone \_\_\_\_\_ NAD27 ☐ NAD83 ☐  
NAD83 Epoch \_\_\_\_\_  
Elev. \_\_\_\_\_  
Vert. Datum: NGVD29 ☐ NAVD88 ☐  
Meas. Units: Metric ☐ Imperial ☒

Corner - Left as found ☒ Found and tagged ☐ Established ☐ Reestablished ☐ Rebuilt ☐

Identification and type of corner found: Evidence used to identify or procedure used to establish or reestablish the corner:  
SEE SKETCH ON BACKSIDE.

A description of the physical condition of the monument as found and as set or reset:  
FOUND MONUMENT IN GOOD CONDITION. SEE SKETCH ON BACKSIDE.

## SURVEYOR'S STATEMENT

This Corner Record was prepared by me or under my direction in conformance with  
the Land Surveyors' Act on April 28, 2008.

Signed Manuel Solis R.C.E. Number C30890

## COUNTY SURVEYOR'S STATEMENT

This Corner Record was received MAY 2ND, 2008 and examined  
and filed MAY 5TH, 2008.

Signed John G. May L.S. No. 6186  
Title Deputy County Surveyor

County Surveyor's Comment \_\_\_\_\_  
THIS CORNER RECORD IS NOT IN COMPLIANCE WITH BOARD RULE 464(c)  
REGARDING SUBMITTAL WITHIN 90 DAYS FROM THE DATE OF SURVEY.

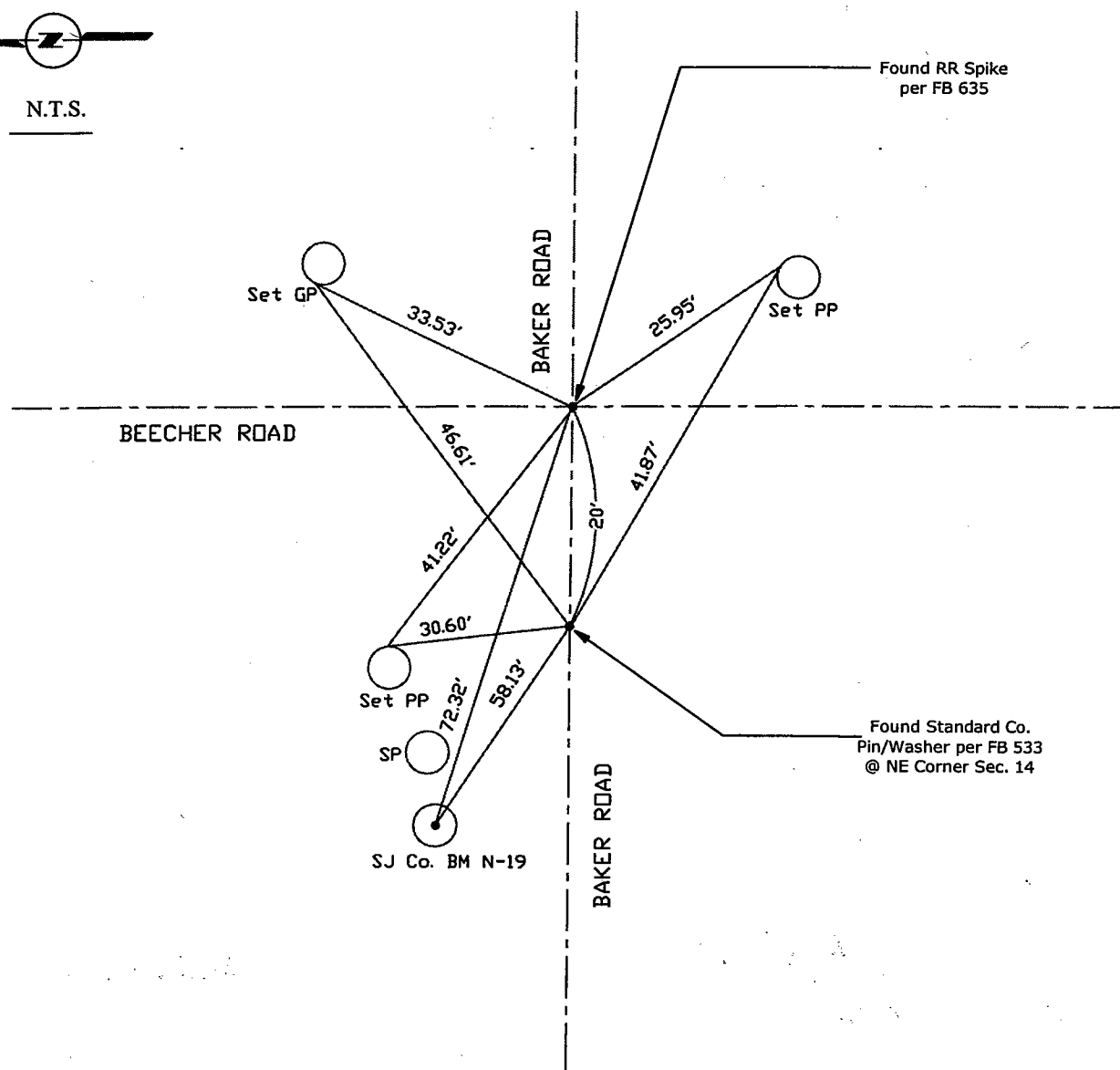
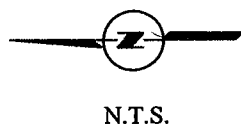
(D.D. Sheet No. 26 )  
(Job No. 750108)



Manuel Solis



5/5/2008



Note: Found Monuments are not tagged unless otherwise noted.

"No Attempt Was Made to Verify the Monument(s)"

BM=Benchmark  
 GP=Guy Post  
 JP=Joint Pole  
 PP=Power Pole  
 SP=Service Pole  
 TP=Telephone Pole  
 S.F.N=Searched Found Nothing  
 N.T.S.=Not To Scale  
 Set=Conc. Nail with Brass Washer Stamped  
 "S.J. Co.", unless otherwise noted

Note: Set Ties are Brass Washers  
 Stamped "S.J.Co. PUBLIC WORKS"