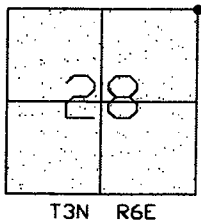


# CORNER RECORD

Document Number CR-08-122  
 City of \_\_\_\_\_ County of San Joaquin, California

Brief Legal Description ARMSTRONG ROAD NE CORNER SECTION 28



## CORNER TYPE

Government Corner ☒ Control ☐  
 Meander ☐ Property ☐  
 Rancho ☐ Other ☐  
 Date of Survey March 31, 2008

## COORDINATES (Optional)

N. \_\_\_\_\_  
 E. \_\_\_\_\_  
 Zone \_\_\_\_\_ NAD27 ☐ NAD83 ☐  
 NAD83 Epoch \_\_\_\_\_  
 Elev. \_\_\_\_\_  
 Vert. Datum: NGVD29 ☐ NAVD88 ☐  
 Meas. Units: Metric ☐ Imperial ☒

Corner - Left as found ☒ Found and tagged ☐ Established ☐ Reestablished ☐ Rebuilt ☐

Identification and type of corner found: Evidence used to identify or procedure used to establish or reestablish the corner:  
SEE SKETCH ON BACKSIDE.

A description of the physical condition of the monument as found and as set or reset:  
SEE SKETCH ON BACKSIDE.

## SURVEYOR'S STATEMENT

This Corner Record was prepared by me or under my direction in conformance with the Land Surveyors' Act on April 28, 2008.

Signed Manuel Solorio R.C.E. Number C30890



## COUNTY SURVEYOR'S STATEMENT

This Corner Record was received MAY 2ND, 2008 and examined and filed MAY 5TH, 2008.

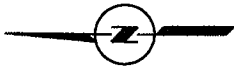
Signed John G. May P.L.S. No. 6186

Title Deputy County Surveyor

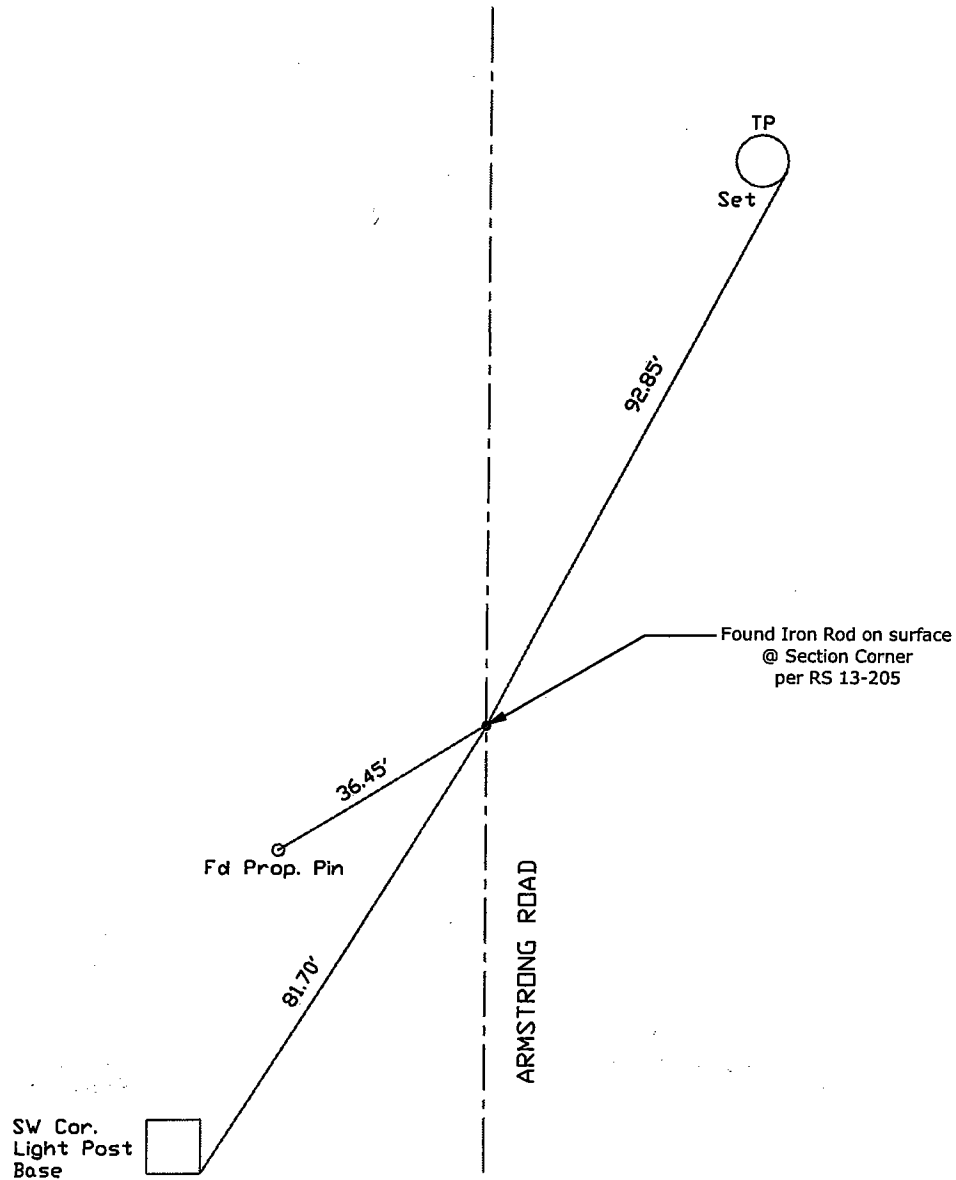
County Surveyor's Comment \_\_\_\_\_



5/5/2008



N.T.S.



Note: Found Monuments are not tagged unless otherwise noted.

"No Attempt Was Made to Verify the Monument(s)"

FP=Fence Post

FH=Fire Hydrant

JP=Joint Pole

PP=Power Role

SP=Service Pole

TP=Telephone Pole.

S.F.N= Searched Found Nothing

N.T.S.=Not To Scale

Set=Conc. Nail with Brass Washer Stamped

"S.J. Co.", unless otherwise noted

Note: Set Ties are Brass Washers  
Stamped "S.J.Co. PUBLIC WORKS"