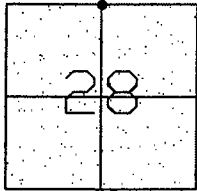


# CORNER RECORD

Document Number CR-08-121  
County of San Joaquin, California

City of \_\_\_\_\_

Brief Legal Description ARMSTRONG ROAD NORTH QUARTER CORNER SECTION 28



T3N R6E

## CORNER TYPE

Government Corner ☒ Control ☐  
Meander ☐ Property ☐  
Rancho ☐ Other ☐

Date of Survey March 31, 2008

## COORDINATES (Optional)

N. \_\_\_\_\_  
E. \_\_\_\_\_  
Zone \_\_\_\_\_ NAD27 ☐ NAD83 ☐  
NAD83 Epoch \_\_\_\_\_  
Elev. \_\_\_\_\_  
Vert. Datum: NGVD29 ☐ NAVD88 ☐  
Meas. Units: Metric ☐ Imperial ☒

Corner - Left as found ☒ Found and tagged ☐ Established ☐ Reestablished ☐ Rebuilt ☐

Identification and type of corner found: Evidence used to identify or procedure used to establish or reestablish the corner:  
SEE SKETCH ON BACKSIDE.

A description of the physical condition of the monument as found and as set or reset:  
SEE SKETCH ON BACKSIDE.

## SURVEYOR'S STATEMENT

This Corner Record was prepared by me or under my direction in conformance with the Land Surveyors' Act on April 28, 2008.

Signed Manuel Solerio R.C.E. Number C30890



## COUNTY SURVEYOR'S STATEMENT

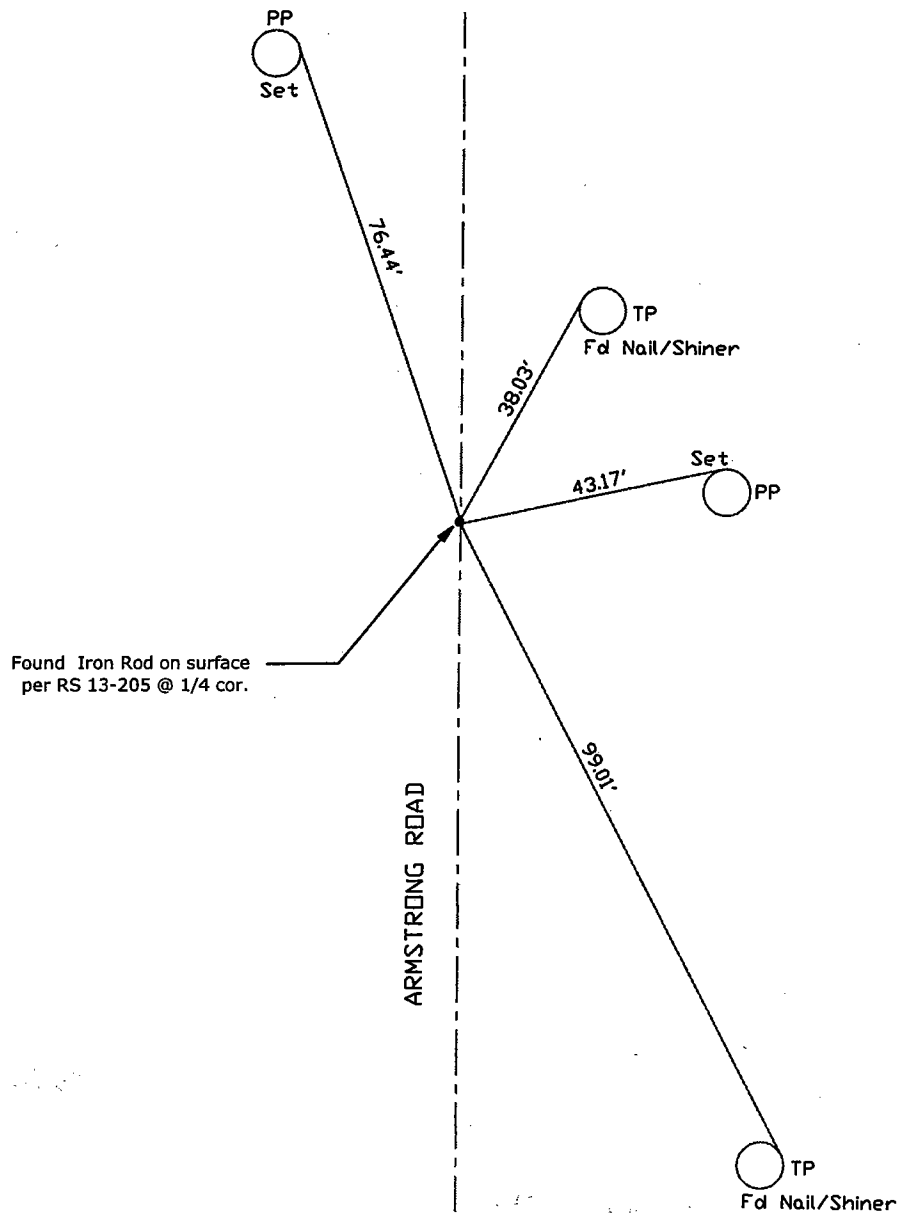
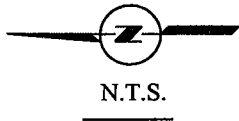
This Corner Record was received MAY 2ND, 2008 and examined and filed MAY 5TH, 2008.

Signed John G. May P.L.S. No. 6186  
Title Deputy County Surveyor

County Surveyor's Comment \_\_\_\_\_



5/5/2008



Note: Found Monuments are not tagged unless otherwise noted.

"No Attempt Was Made to Verify the Monument(s)"

FP=Fence Post  
GP=Guy Post  
JP=Joint Pole  
PP=Power Pole  
SP=Service Pole  
TP=Telephone Pole  
S.F.N=Searched Found Nothing  
N.T.S.=Not To Scale  
Set=Conc. Nail with Brass Washer Stamped  
"S.J. Co.", unless otherwise noted

Note: Set Ties are Brass Washers  
Stamped "S.J.Co. PUBLIC WORKS"