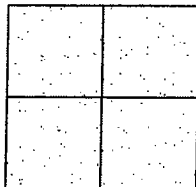


City of _____

Brief Legal Description DE BROGGI ROAD @ REPUBLIC WAY



Government Corner ☐ Control ☐
Meander ☐ Property ☐
Rancho ☐ Other ☒

Date of Survey February 20, 2008

N. _____
E. _____
Zone _____ NAD27 ☐ NAD83 ☐
NAD83 Epoch _____
Elev. _____
Vert. Datum: NGVD29 ☐ NAVD88 ☐
Meas. Units: Metric ☐ Imperial ☒

Corner - Left as found ☒ Found and tagged ☐ Established ☐ Reestablished ☐ Rebuilt ☐


Identification and type of corner found: Evidence used to identify or procedure used to establish or reestablish the corner:
SEE SKETCH ON BACKSIDE.

A description of the physical condition of the monument as found and as set or reset;
SEE SKETCH ON BACKSIDE.

This Corner Record was prepared by me or under my direction in conformance with the Land Surveyors' Act on March 18, 2008.

Signed Mamuel Adonis R.C.E. Number C30890

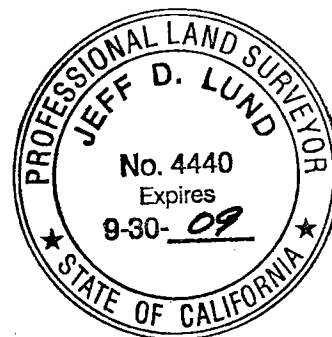
This Corner Record was received MARCH 24, 2008 and examined and filed MARCH 26, 2008.

Signed  P.L.S. No. 4440
Title Assistant County Surveyor

County Surveyor's Comment

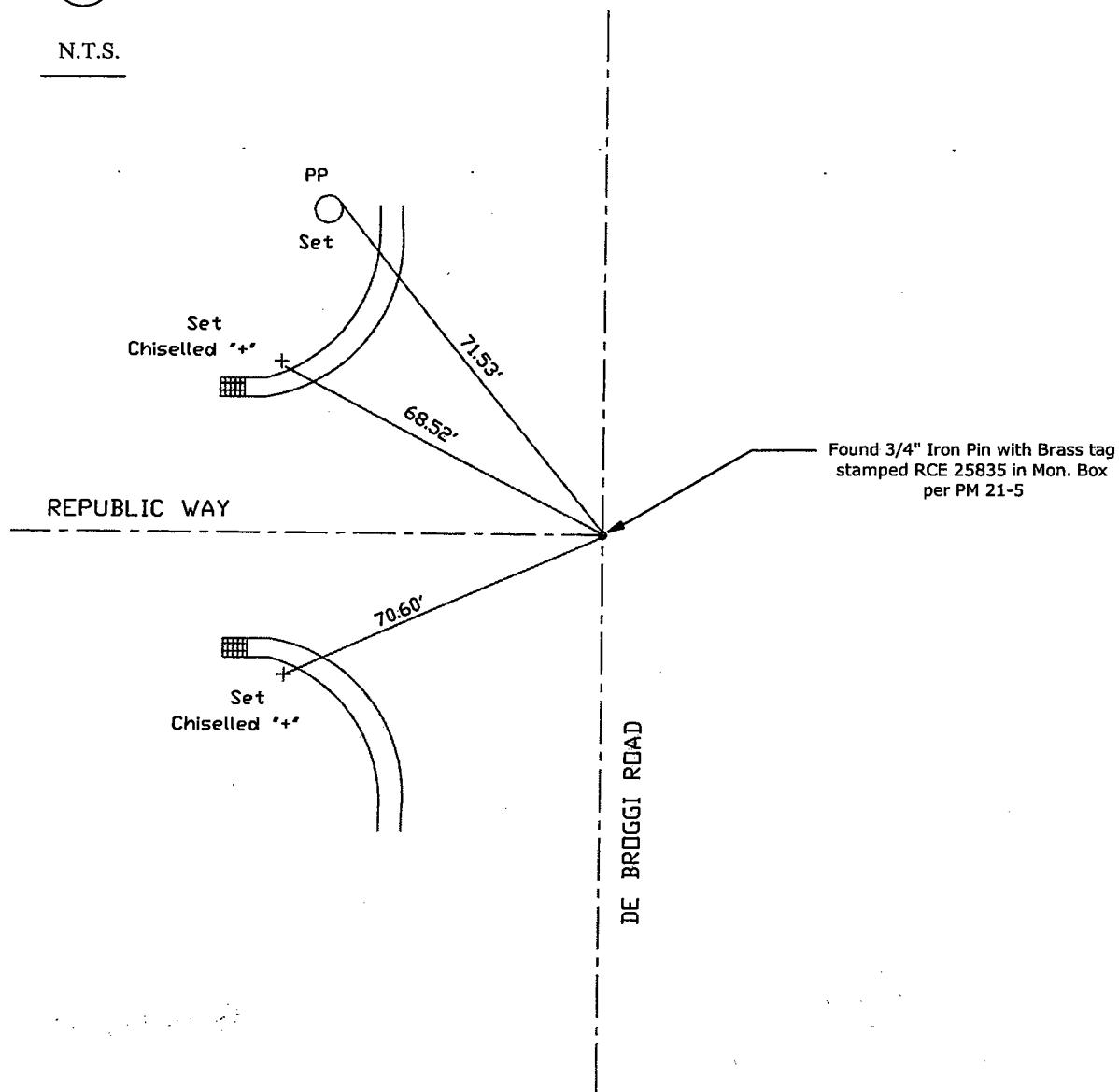


Manuel Adoré





N.T.S.



Note: Found Monuments are not tagged unless otherwise noted.

"No Attempt Was Made to Verify the Monument(s)"

FP=Fence Post
 GP=Guy Post
 JP=Joint Pole
 PP=Power Pole
 SP=Service Pole
 TP=Telephone Pole
 S.F.N=Searched Found Nothing
 N.T.S.=Not To Scale
 Set=Conc. Nail with Brass Washer Stamped
 "S.J. Co.", unless otherwise noted

Note: Set Ties are Brass Washers
 Stamped "S.J.Co. PUBLIC WORKS"