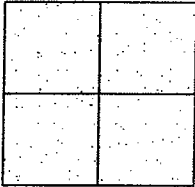


## CORNER RECORD

City of

Document Number CR 08-108  
County of San Joaquin, California

Brief Legal Description **DE BROGGI ROAD @ STAR STREET**



## CORNER TYPE

Government Corner ☐ Control ☐  
 Meander ☐ Property ☐  
 Rancho ☐ Other ☒

Date of Survey February 20, 2008

## COORDINATES (Optional)

N. \_\_\_\_\_  
E. \_\_\_\_\_  
Zone \_\_\_\_\_ NAD27 ☐ NAD83 ☐  
NAD83 Epoch \_\_\_\_\_  
Elev. \_\_\_\_\_  
Vert. Datum: NGVD29 ☐ NAVD88 ☐  
Meas. Units: Metric ☐ Imperial ☒

Corner - Left as found ☒ Found and tagged ☐ Established ☐ Reestablished ☐ Rebuilt ☐

Identification and type of corner found: Evidence used to identify or procedure used to establish or reestablish the corner:  
SEE SKETCH ON BACKSIDE.

A description of the physical condition of the monument as found and as set or reset:  
SEE SKETCH ON BACKSIDE.

### SURVEYOR'S STATEMENT

This Corner Record was prepared by me or under my direction in conformance with the Land Surveyors' Act on March 18, 2008.

Signed Manuel Solor R.C.E. Number C30890

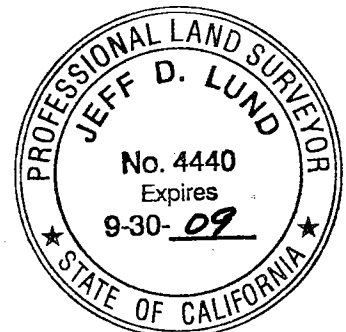


## COUNTY SURVEYOR'S STATEMENT

This Corner Record was received MARCH 24, 2008 and examined and filed MARCH 26, 2008.

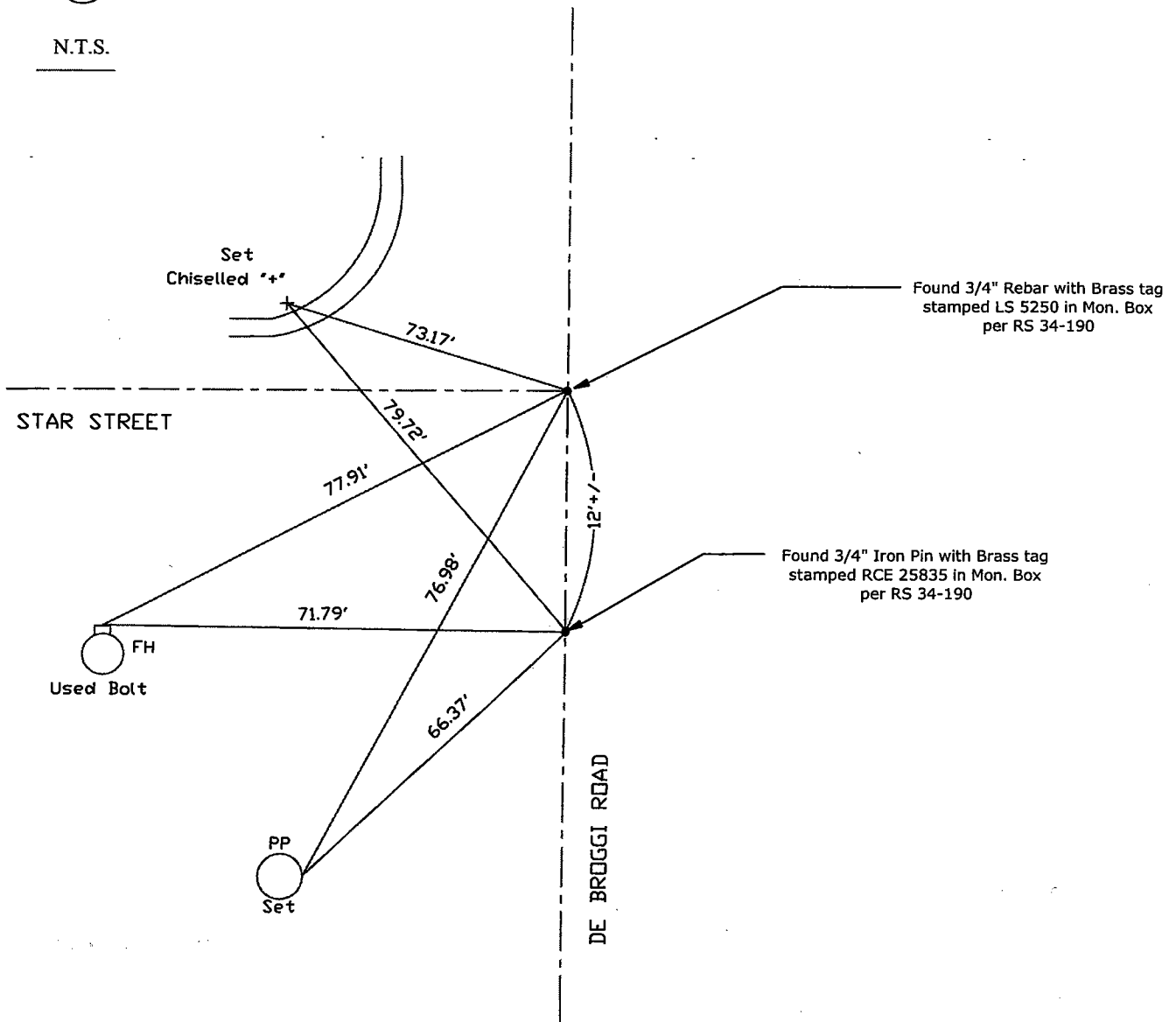
Signed  P.L.S. No. 4440  
Title Assistant County Surveyor

County Surveyor's Comment \_\_\_\_\_





N.T.S.



Note: Found Monuments are not tagged unless otherwise noted.

"No Attempt Was Made to Verify the Monument(s)"

FP=Fence Post  
 FH=Fire Hydrant  
 JP=Joint Pole  
 PP=Power Pole  
 SP=Service Pole  
 TP=Telephone Pole  
 S.F.N=Searched Found Nothing  
 N.T.S.=Not To Scale  
 Set=Conc. Nail with Brass Washer Stamped  
 "S.J. Co.", unless otherwise noted

Note: Set Ties are Brass Washers  
 Stamped "S.J.Co. PUBLIC WORKS"